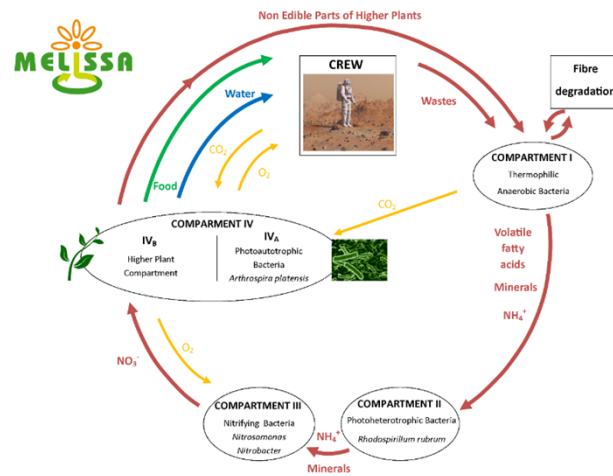


ALISSE A MULTI-CRITERIA TOOL FOR LIFE SUPPORT SYSTEM EVALUATION AND COMPARISON



ALISSE – Advanced Life Support System Evaluator





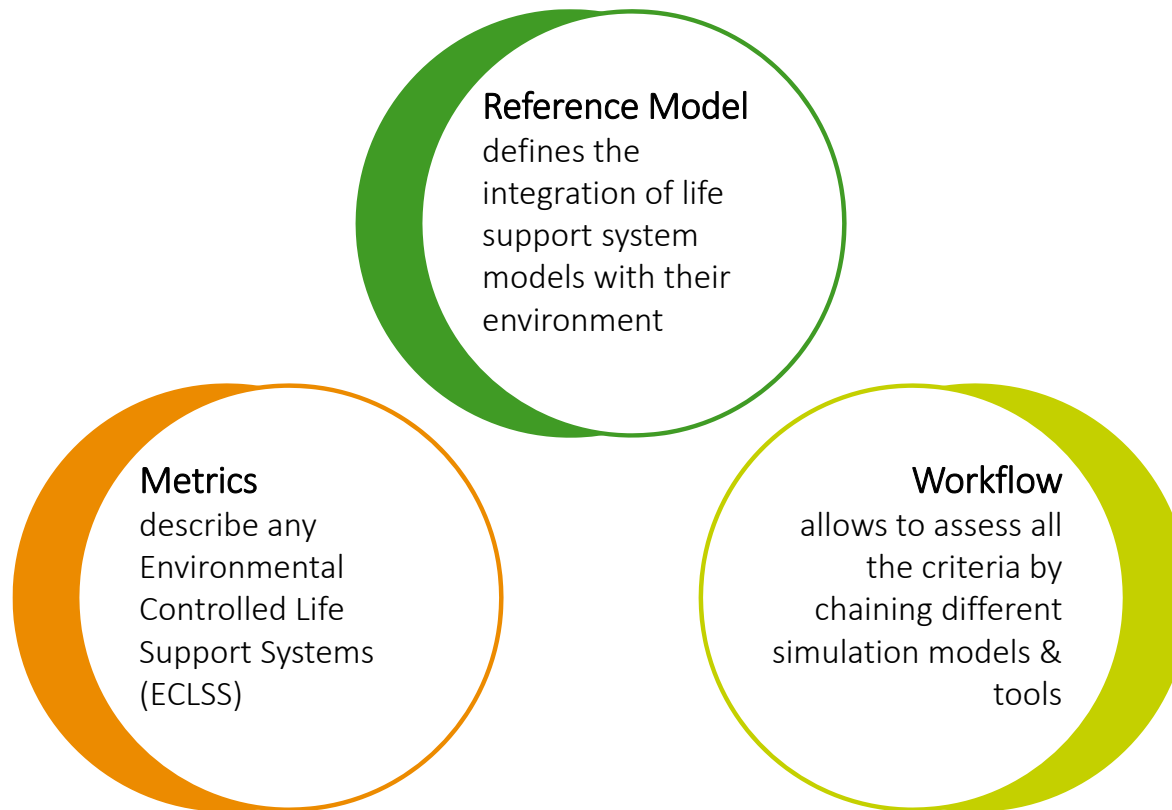
Environmental Controlled Life Support Systems

- Long duration space missions
 - Long duration space missions, such as the establishment of permanent bases on the lunar surface or the travel to Mars, require an amount of life support consumables that cannot be supplied from Earth.
 - Regenerative Life Support Systems are therefore necessary to sustain long-term manned space mission in order to increase recycling rates and thus reduce the mass to be launched.
- Environmental Controlled Life Support Systems
 - ECLSS are systems that enable the survival of humans being in space, by providing, among other functions, the crew supply with oxygen, water and food.
 - The architecture of such an ECLSS widely depends on the mission scenario.



ALiSSE – a tool-based methodology

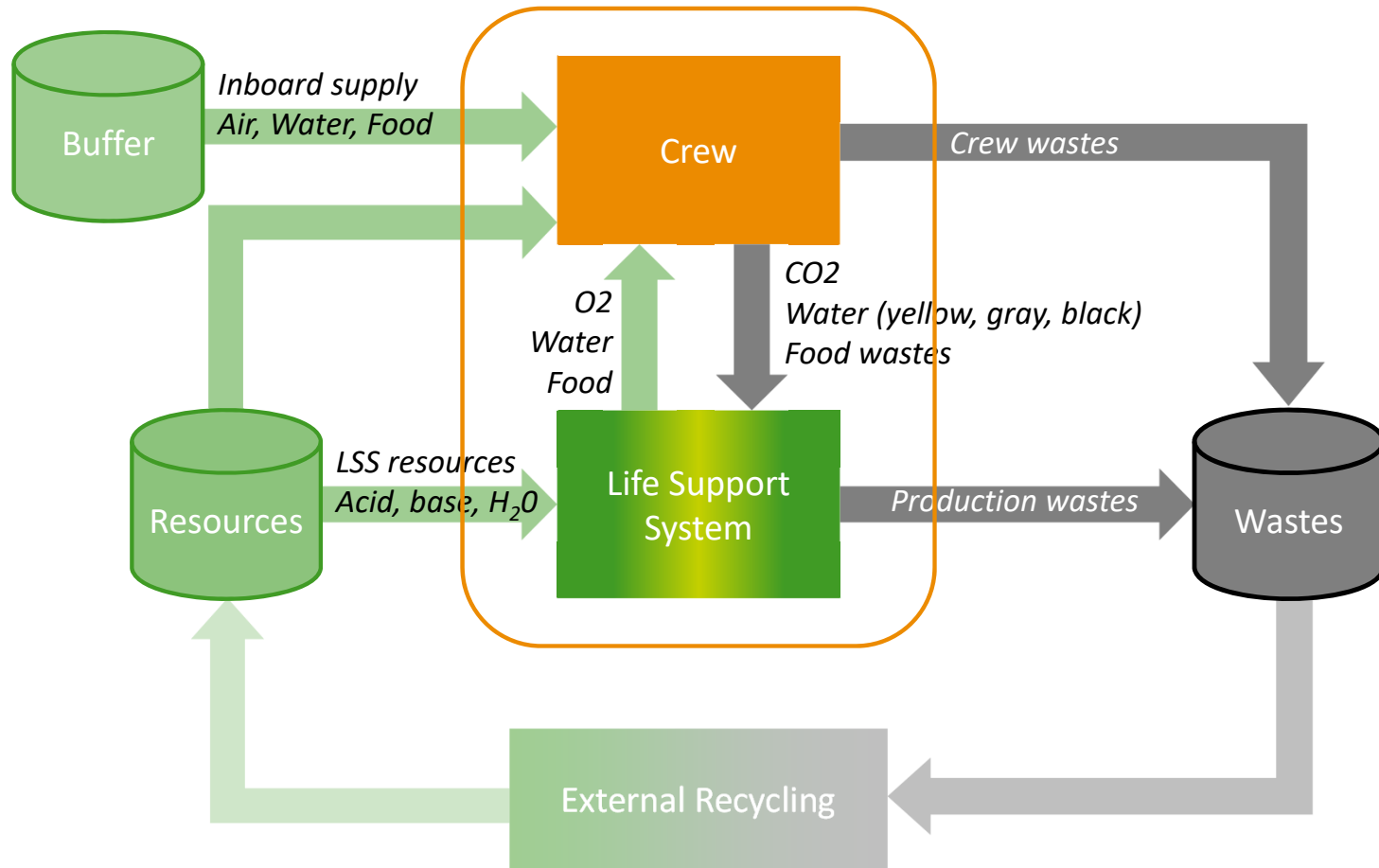
ALiSSE provides a **decision-making** tool to support ECLSS trade-off for a given Space Mission



ALiSSE is developed by a consortium led by ESA



Reference-Model





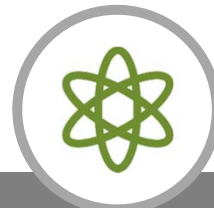
Metrics

Evaluation and selection of ECLSS architecture is a comprehensive trade-off between mass, technology, safety, lifecycle cost and strategic considerations.



Mass

Coverage Mass Ratio: total system mass over total allocated mass



Energy & Power

Mean & Max power consumed in mission



Crew Time

Total Crew Time for operation and maintenance of the ECLSS



Risk for Human

Global risk index



Reliability

Global system reliability



Sustainability

Need coverage level. Energy/Matter external dependence

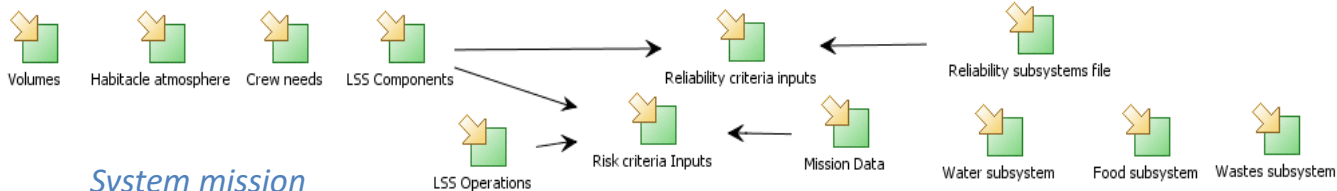


Workflow

System Design & Analysis

Global Loop Modeling & Simulation

Physical Modeling

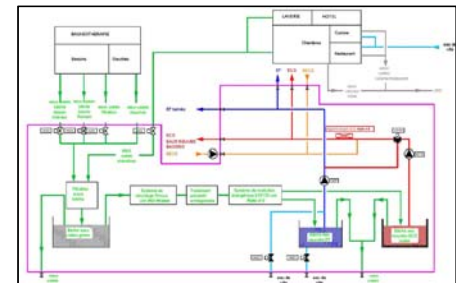
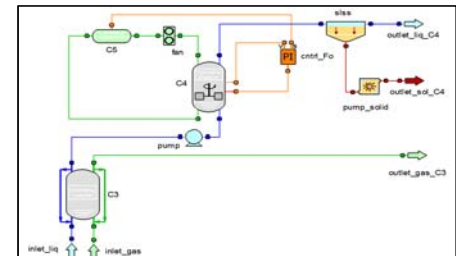
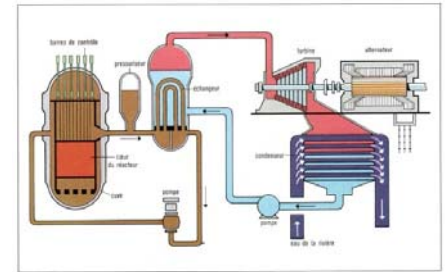
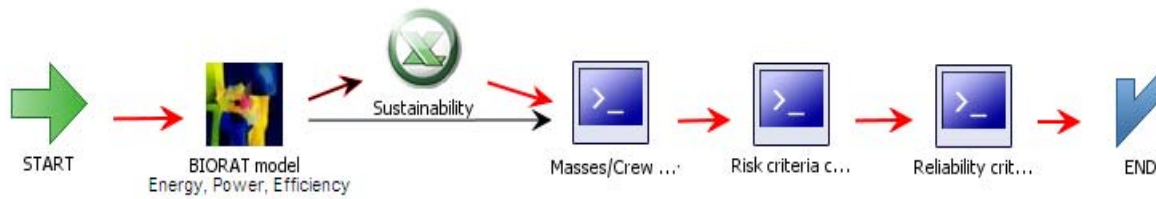


System mission definition

Specification 'model needs'



Simulation Workflow Multi-models





Workflow

System Design & Analysis

Global Loop Modeling & Simulation

Physical Modeling

System mission definition



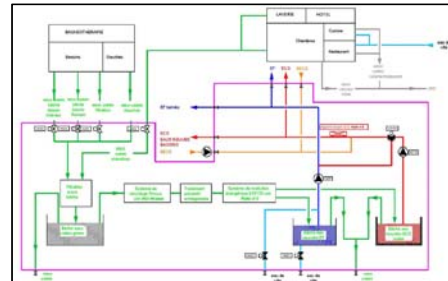
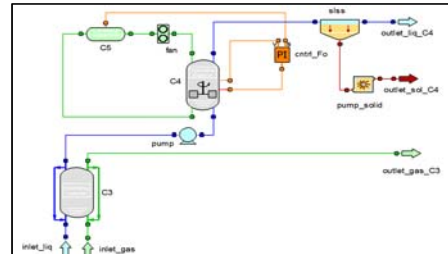
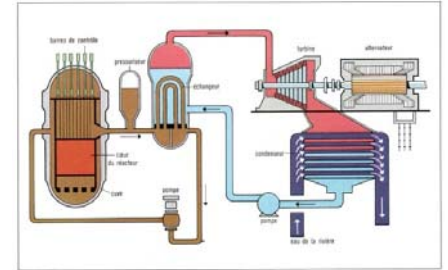
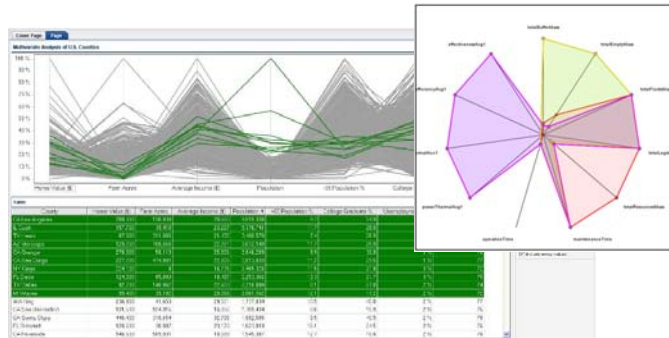
Specification 'model needs'

Simulation Workflow Multi-models



Multi-criteria optimization and decision

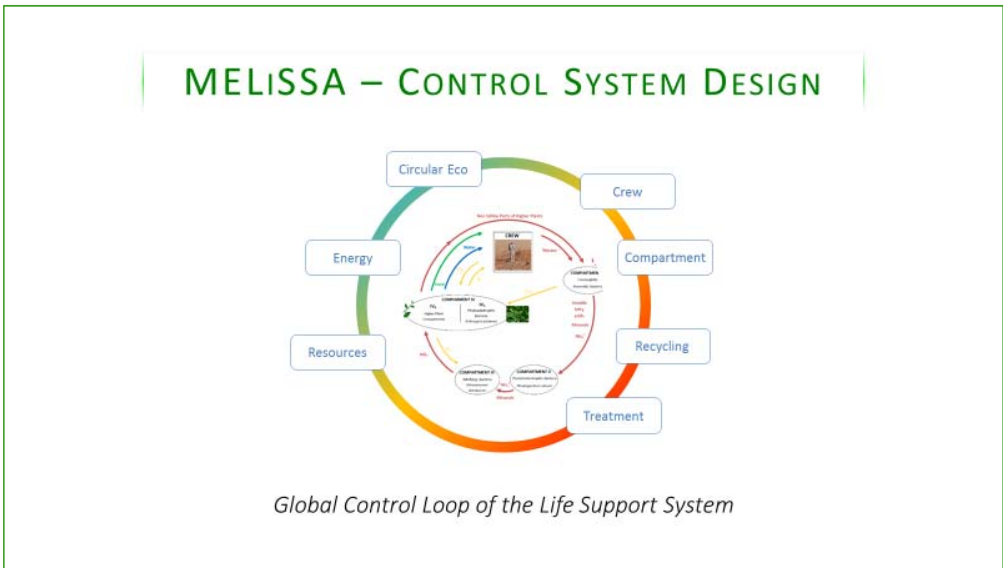
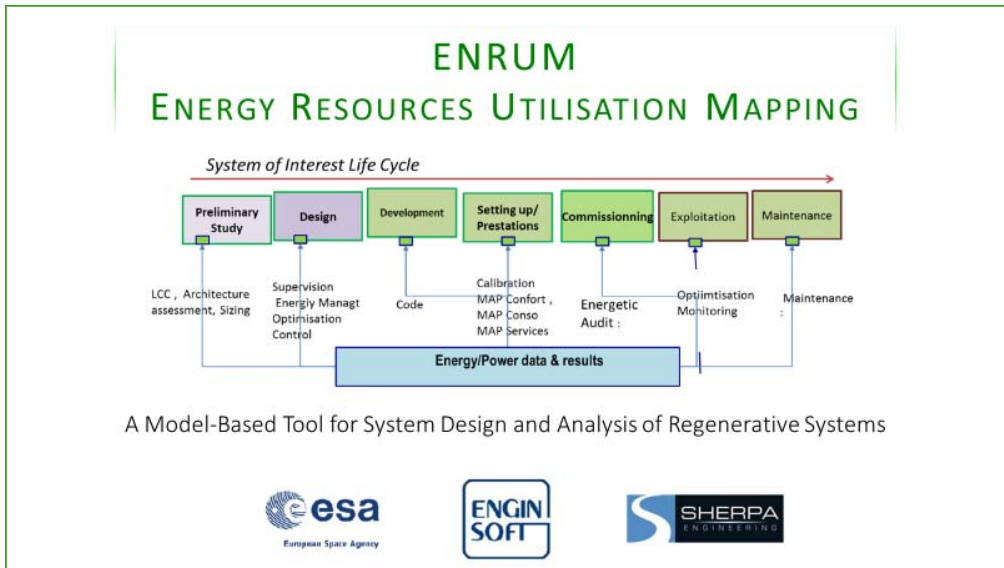
Criteria aggregation





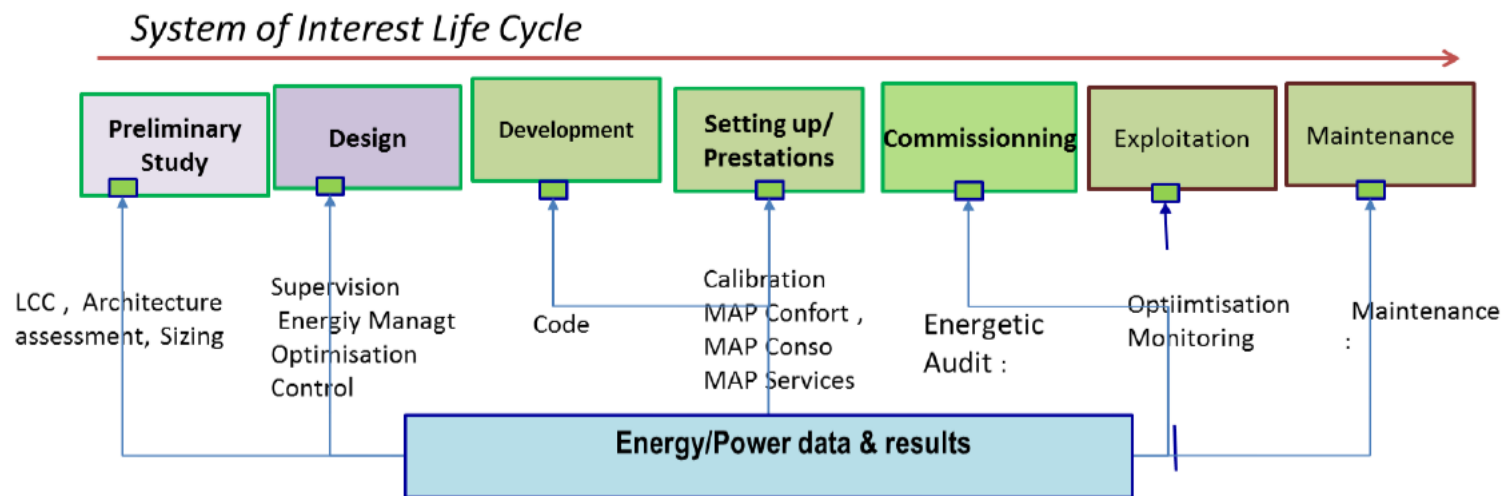
From ALiSSE to ...

Various tool-based methodologies were derived from ALiSSE



ENRUM

ENERGY RESOURCES UTILISATION MAPPING



A Model-Based Tool for System Design and Analysis of Regenerative Systems

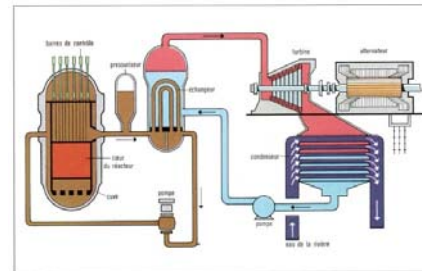
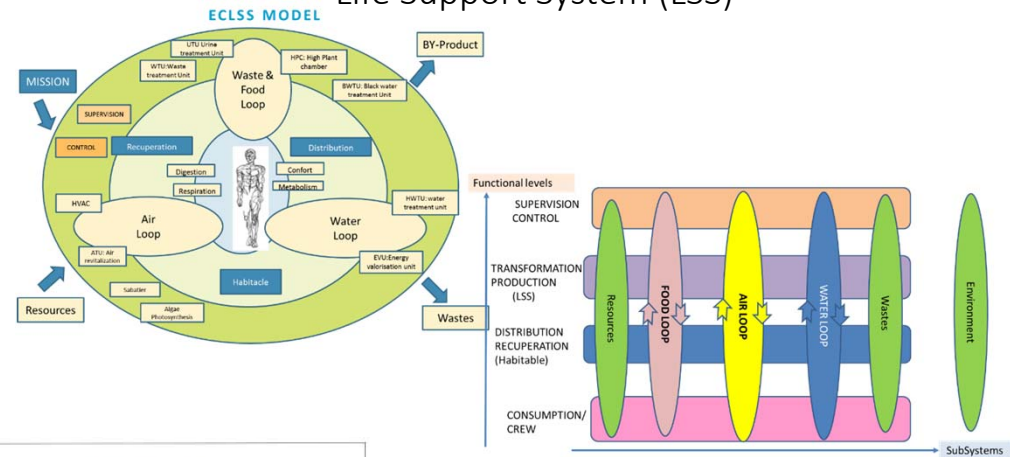




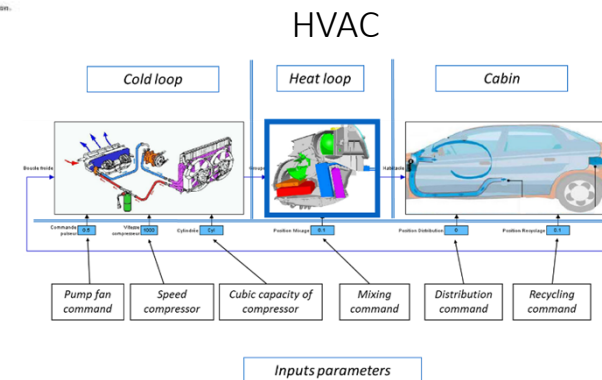
Circular Regenerative Systems

- ENRUM provides models and tools for system design and analysis of complex energetic systems
- ENRUM enables
 - To do mass and energy balances
 - To compute some performance criteria: index of mass and energy closure, recycling rate, resources intensity, autarky degree
 - To allow some functional design
 - To assess different architectures and technology choices with the same mission

Life Support System (LSS)



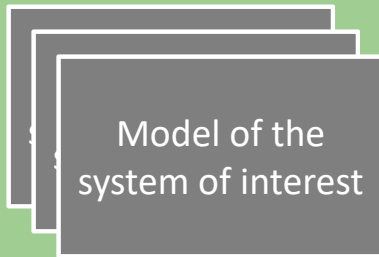
Powerplant
(electricity production from Rankine thermal cycle)





ENRUM Features – a global view

Model Manager



Simulation Manager

Structure extraction

Scenario definition

Simulation

Energy viewpoint extraction

Analysis

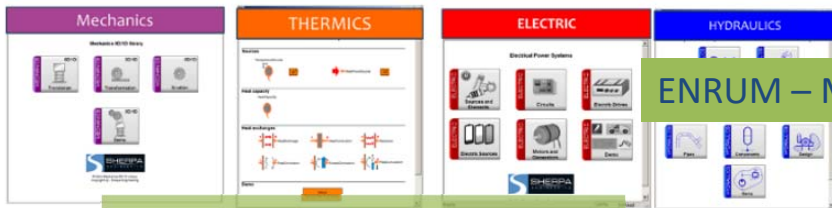
Timeseries visualization

Statistic analysis

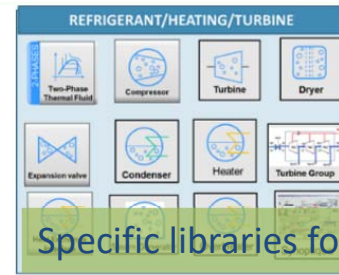
Energy & power specific diagrams



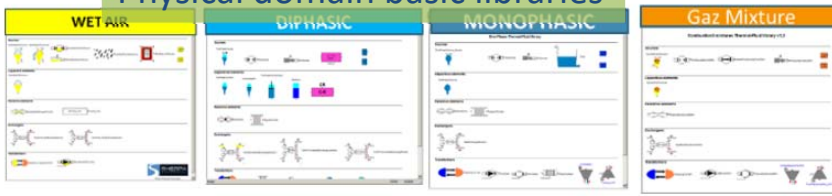
Model & Simulation management



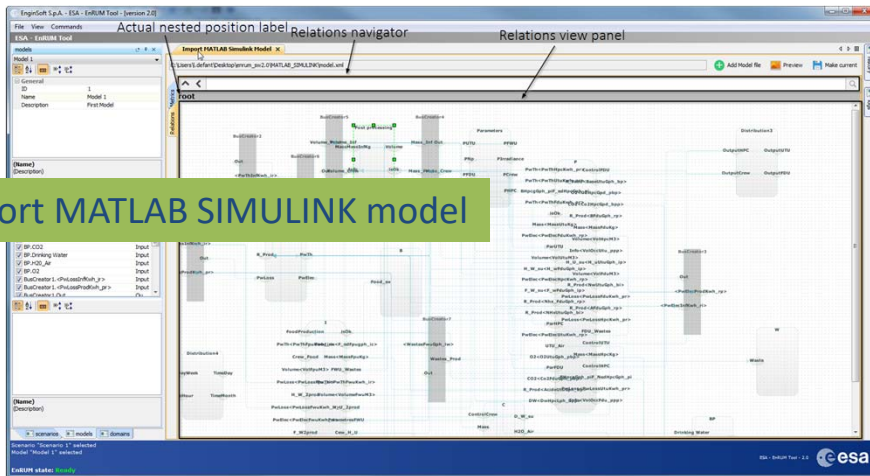
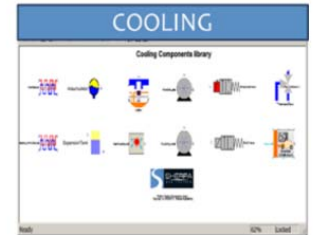
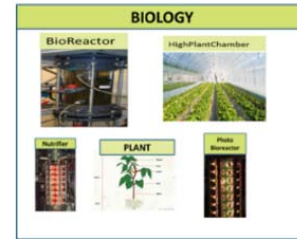
ENRUM – Model libraries



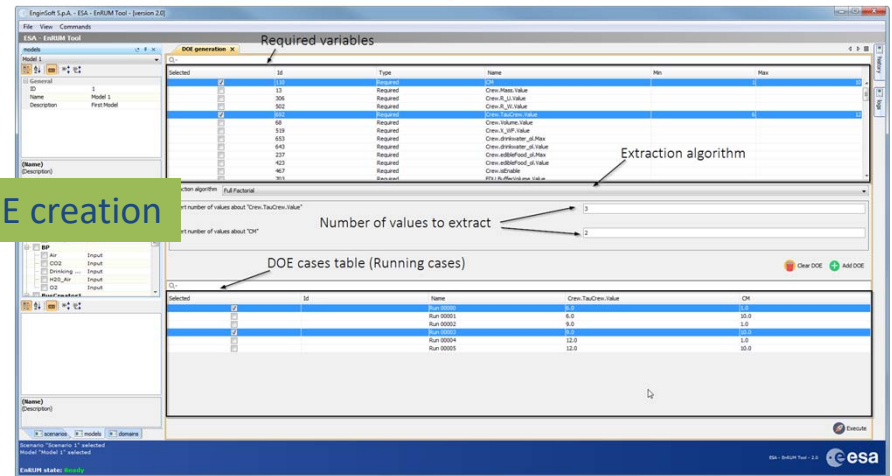
Specific libraries for domain-application



Physical domain basic libraries



Import MATLAB SIMULINK model

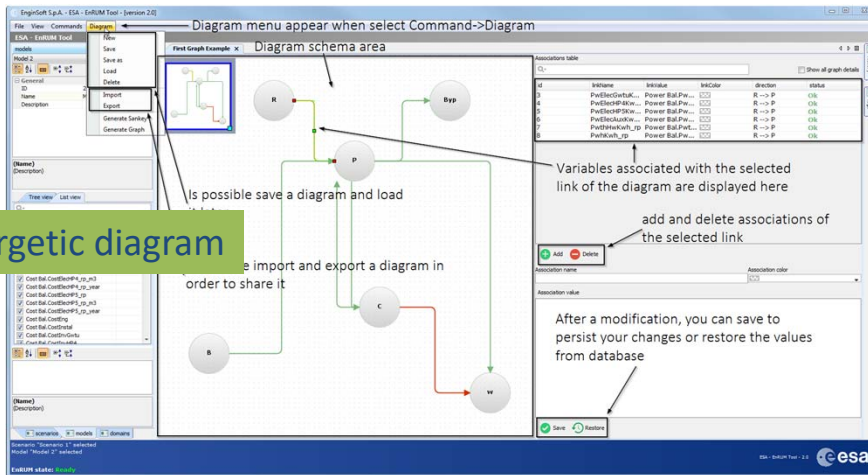


DOE creation

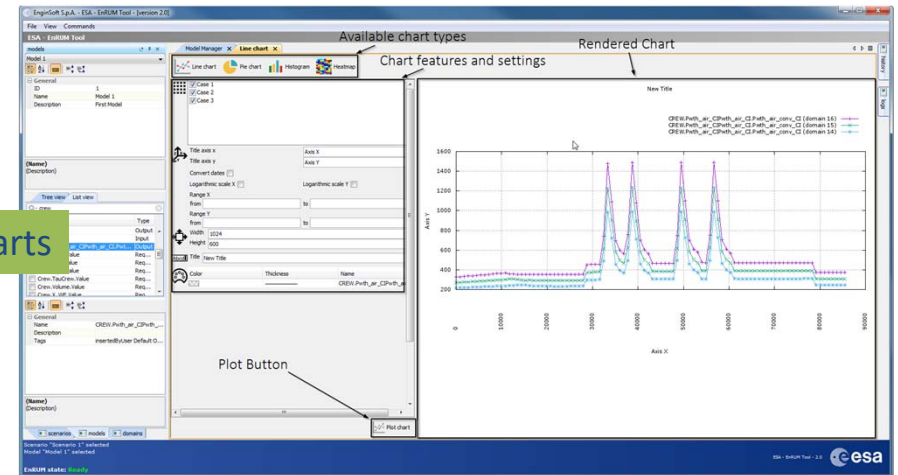


Timeseries and energetic analysis

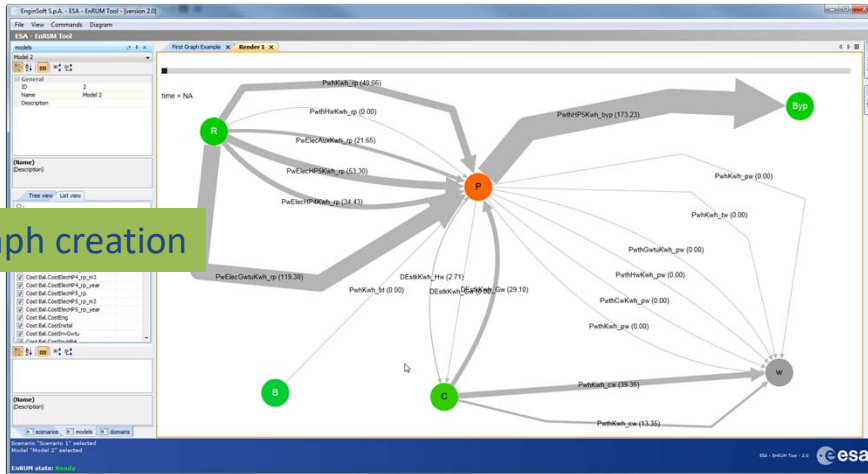
Energetic diagram



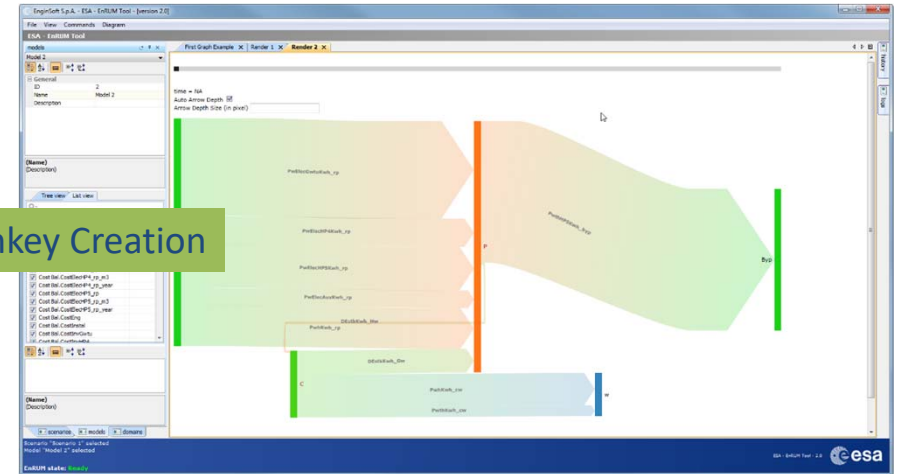
Charts



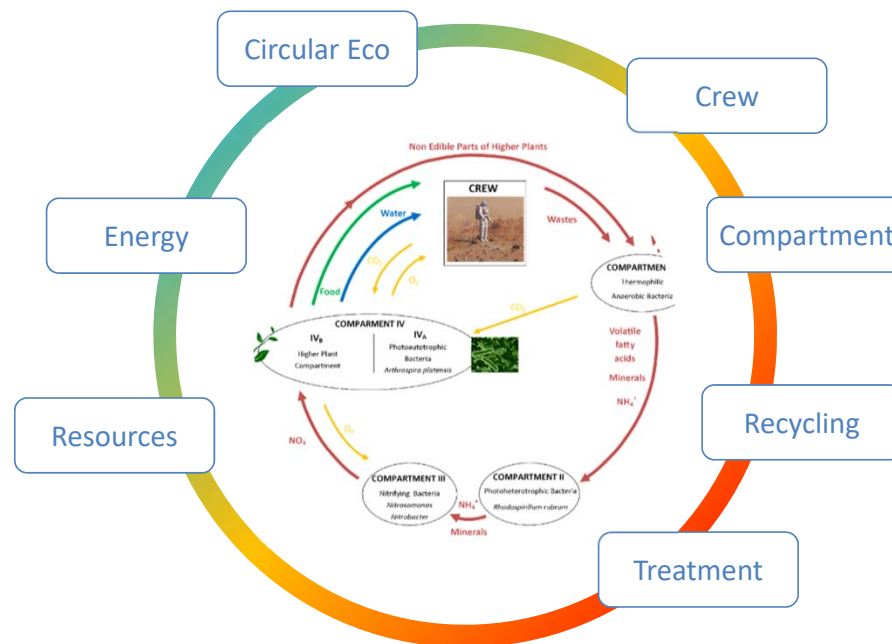
Graph creation



Sankey Creation



MELISSA – CONTROL SYSTEM DESIGN



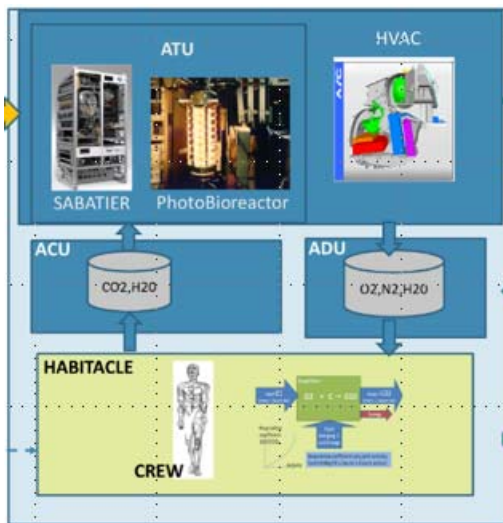
Global Control Loop of the Life Support System



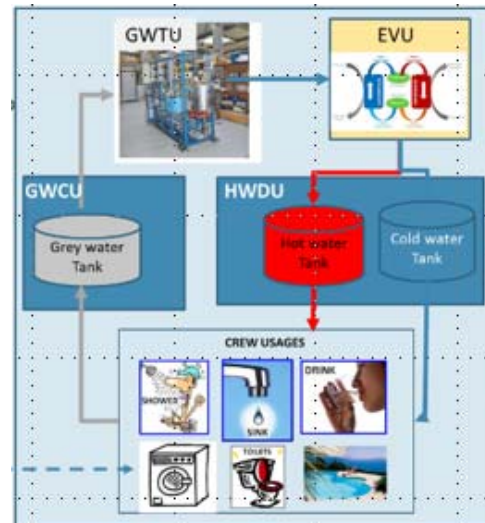
How to manage the complexity of the LSS

Compartments: Crew, Plant, Nitrification, Degradation

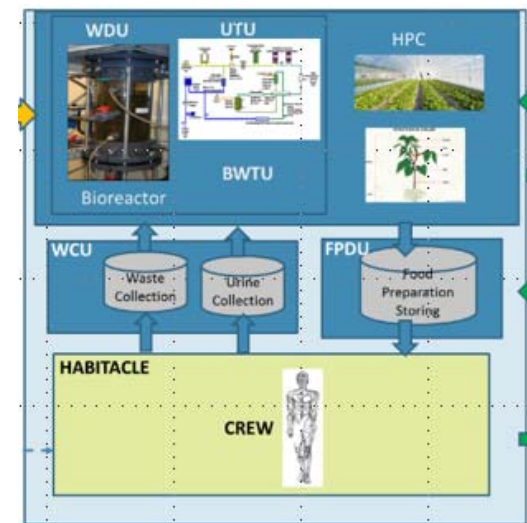
Air loop



Water loop



Food loop



Crew Needs = f(crew number, activities ...)

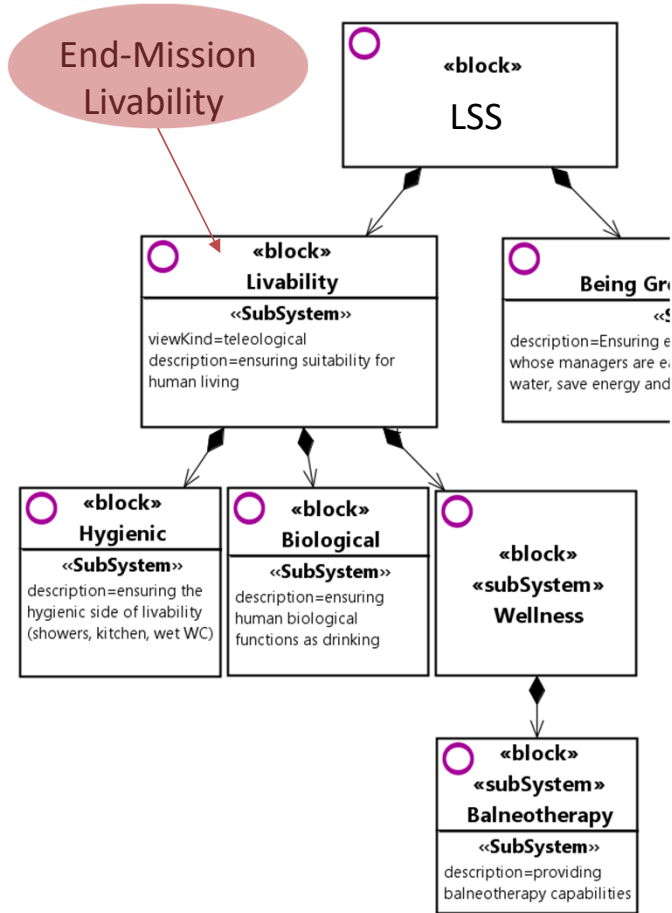
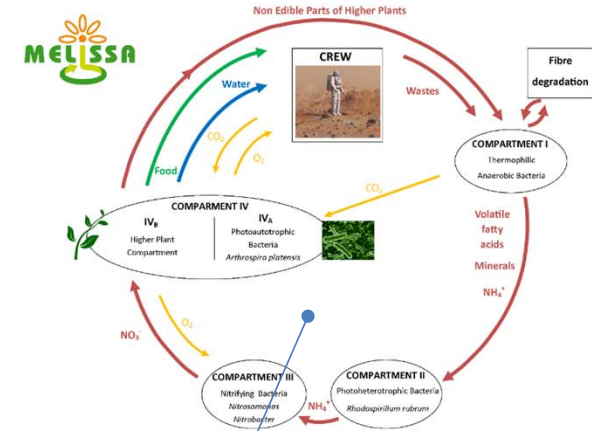
Control: from needs to actions

Effectiveness: chemical reaction to satisfaction

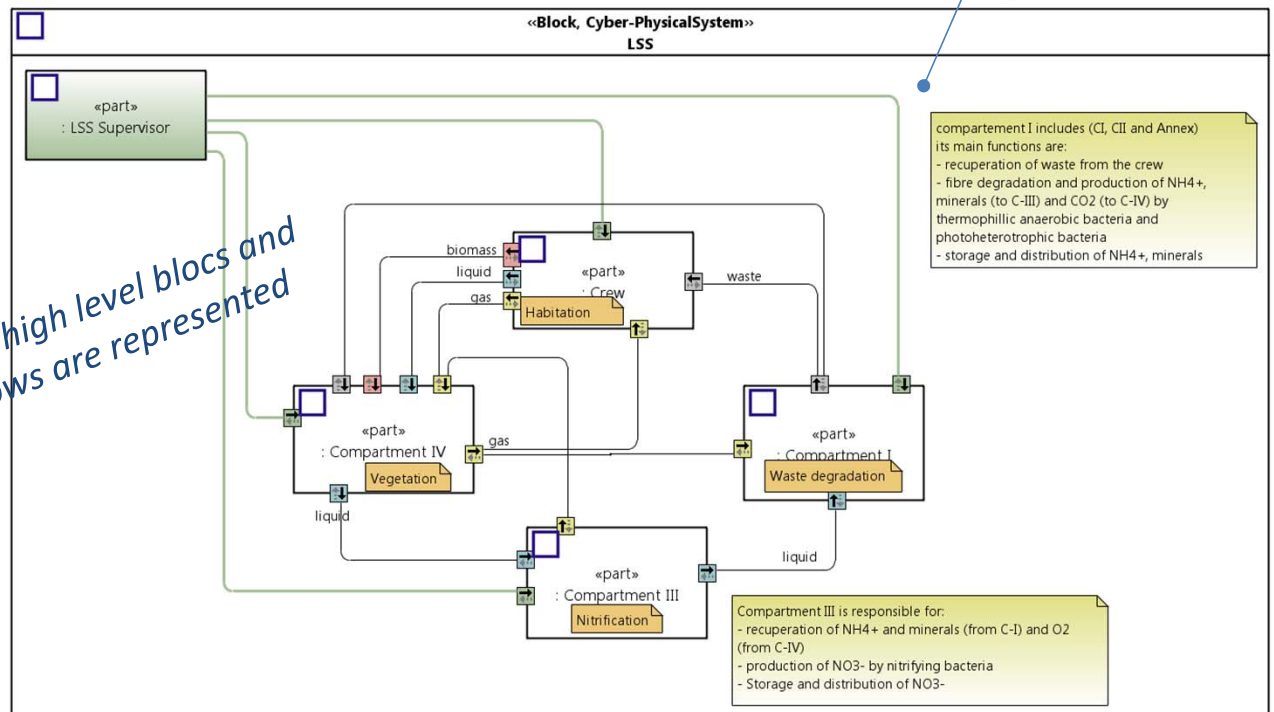


Systemic Modeling

To design and evaluate the global loop



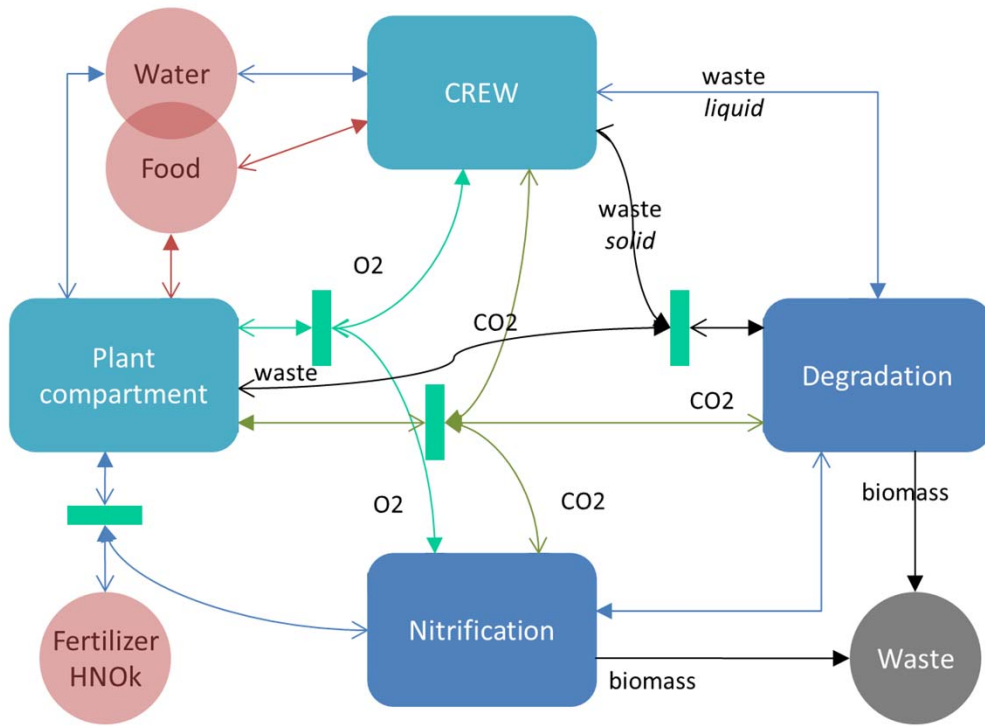
Functional model: MELISSA loop



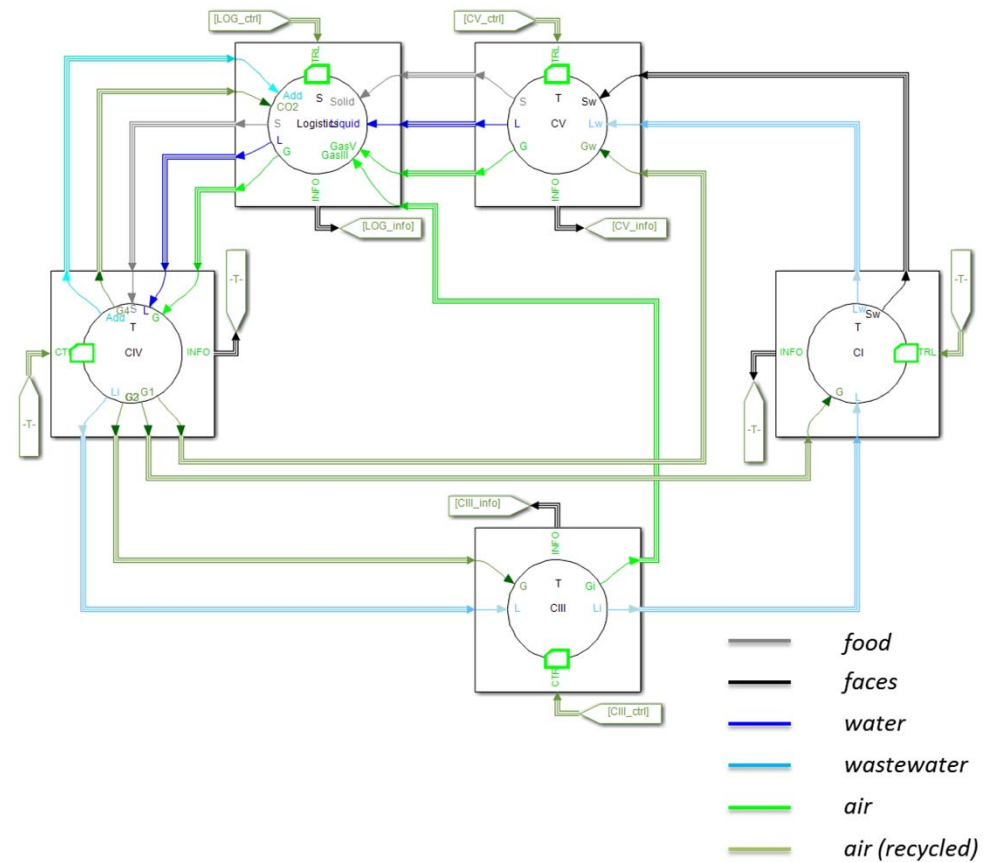


Control of the Global Loop

Flow definition – Global loop



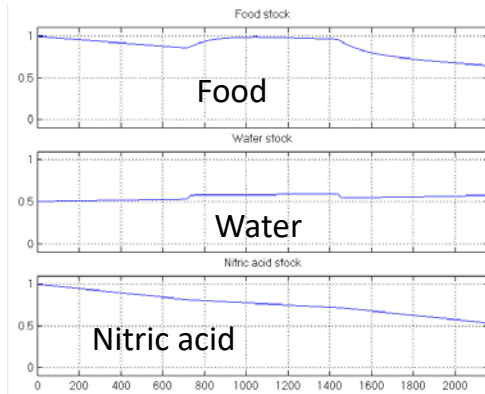
Simulation model



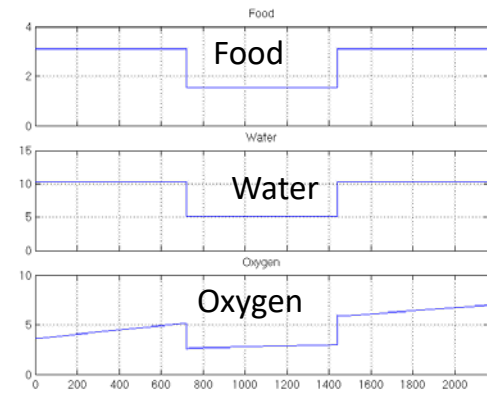
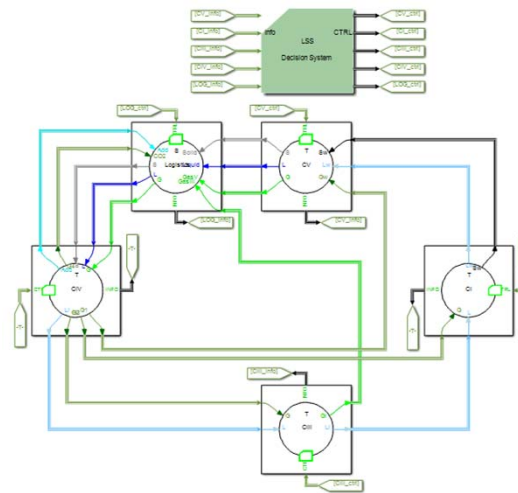


Simulation Model

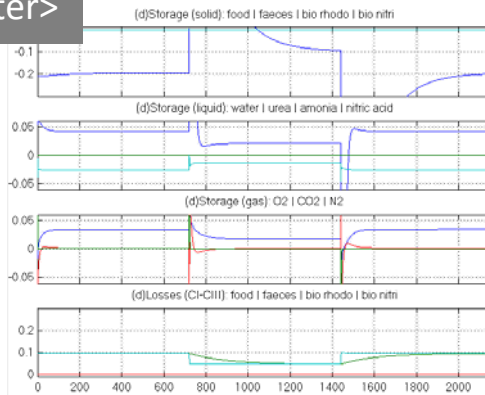
Stocks



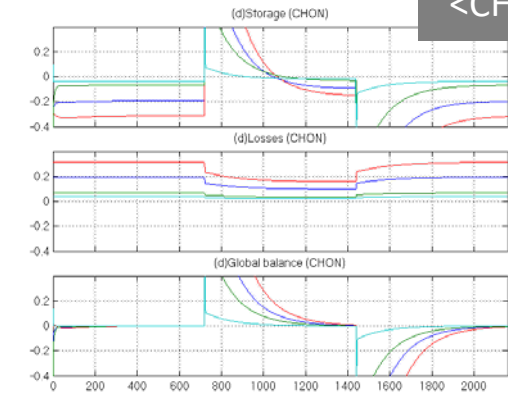
CREW



Balance
<Matter>



Balance
<CHON>



ALISSE

ADVANCED LIFE SUPPORT SYSTEM EVALUATOR

- More than a tool, ALISSE is a system approach to design and evaluate ECLSS
- For more than 8 years now, all MELiSSA activities refer to ALISSE metrics
- The latest *by-products* are
 - ENRUM: focus on energy and matter viewpoints for space and terrestrial applications
 - Control System of the global MELiSSA loop

Future works

ENRUM

- Industrialization & commercialization
- Customization to specific applications

Control of the MELiSSA loop

- Connection to detailed simulation models
- Implementation of the Air loop control in the pilot plant of Barcelona

ECLSS: Environmental Controlled Life Support Systems



Thank you

FOR YOUR INTEREST

The MELISSA Consortium



Contacts



Christophe LASSEUR
Christophe.Lasseur@esa.int



Gino PERNA
g.perna@enginsoft.com



Philippe FIANI
p.fiani@sherpa-eng.com

ALiSSE: other partners



www.icast.org



www.uliege.be



www.empresariosagrupados.es

ENRUM: other partners



www.csem.ch



www.uliege.be