



Document Identification: Detailed design CII	Type	number	Issue	Page : 1 / 90
	TN	80.242	1	

BELISSIMA Contract No. 19297/05/NL/SFe WP80.242 Detailed design of Compartment II

Organization Approval Loop :

Issue Date	Issue	Prepared by (visa):	Checked by (visa):	Approved by (visa):
10/02/2011	1	H. Elslander, W. Schiettecatte Date : 09/02/2011	H. De Wever Date : 10/02/2011	H. De Wever Date : 10/02/2011

Customer Approval :

Approval Date	Issue	Approved by (visa):
14/02/2011	1	B. Lamaze

Distribution List :

Company	Name	Number of copies
ESA	B. Lamaze	2 + electronic
VITO	H. De Wever	1 (electronic)
UBP	G. Dussap	1 (electronic)
UAB	F. Godia	1 (electronic)



Document Identification: Detailed design CII	Type	number	Issue	Page : 2 / 90
	TN	80.242	1	

Change log:

Date	Issue	Reason of the change	Modified paragraphs



Document Identification: Detailed design CII	Type	number	Issue	Page : 3 / 90
	TN	80.242	1	

Table of Content

1. SCOPE	5
2. REFERENCE AND APPLICABLE DOCUMENTS	5
2.1 APPLICABLE DOCUMENTS	5
2.2 REFERENCE DOCUMENTS	5
3. ACRONYMS	5
4. UPDATE LOOP SIZING	6
5. HARDWARE DESCRIPTION	6
5.1 INFLUENT TANK.....	6
5.2 BIOREACTOR HARDWARE.....	13
5.3 EFFLUENT TANK	26
5.4 GAS LOOP.....	30
5.5 CLEANING IN PLACE (CIP).....	36
5.6 STERILISATION IN PLACE (SIP).....	39
6. P&ID	49
7. DIFFERENT OPERATION MODES	51
8. ELECTROTECHNICAL DATA	56
9. PROCESS DESCRIPTION	67
9.1 INFLUENT TANK (VSL2_2000_01)	67
9.1.1 Start-up	67
9.1.2 Nominal operation.....	67
9.1.3 Shut down.....	68
9.2 BIOREACTOR (VSL2_2100_01)	68
9.2.1 Start-up	68
9.2.2 Nominal operation.....	69
9.2.3 Shut-down.....	70
9.3 EFFLUENT TANK (VSL2_2200_01).....	70
9.3.1 Start-up	70
9.3.2 Nominal operation.....	71
9.3.3 Shut down.....	71
9.4 CLEANING PROCESS.....	71
9.4.1 Cleaning the influent tank	71
9.4.2 Cleaning the photobioreactor.....	72
9.4.3 Cleaning the effluent tank	73
9.4.4 Cleaning acid/base lines	74
9.4.5 Cleaning the retractable probes	74
9.5 STERILISATION PROCESS	74
9.5.1 Sterilisation of influent tank	74
9.5.2 Sterilisation of bioreactor	75
9.5.3 Sterilisation of effluent tank.....	76
9.5.4 Sterilisation of acid/base lines.....	77
9.5.5 Sterilisation of the retractable probes.....	77
9.5.6 Sterilisation of inoculum line.....	78
9.5.7 Sampling	78



Document Identification:	Type	number	Issue	Page : 4 / 90
Detailed design CII	TN	80.242	1	

10. CONTROL VALUES.....	78
11. PLC I/O LIST.....	81



Document Identification: Detailed design CII	Type	number	Issue	Page : 5 / 90
	TN	80.242	1	

1. Scope

The MELiSSA loop consists of several compartments, all having a dedicated function. The different process conditions and the intermediate separation techniques are expected to eliminate the major part of the contaminants entering the loop.

Within the BELISSIMA contract, a small-scale MELiSSA loop will be constructed to monitor the behaviour of various microcompounds in this model closed loop system. The BELISSIMA loop will consist of compartments I to IVa and should at a later stage be extendible with a higher plant compartment of appropriate size to allow for statistically relevant analysis on the cultivated vegetables.

TN80.241 addressed the final loop sizing for the whole BELISSIMA loop and included the detailed design of the Waste Preparation Unit and Compartment I.

After approval of TN80.241, it was decided that the availability of a steam sterilizable rather than an autoclavable photoreactor in Compartment II would be crucial for the microcompound study. While commercial autoclavable photoreactors exist with a 100% illuminated volume (preferable for Compartment II operation), this is not the case for steam sterilizable ones. This document thus starts with a brief update of the loop sizing, since a different light/dark ratio of the photoreactor will be used. Analogue to the description of the Waste Preparation Unit and Compartment I in TN80.241, it then provides the detailed design for compartment II. This includes the hardware description, component lists, P&ID's with different operation modes, the process description, electro-technical data, PLC data and control values.

2. Reference and applicable documents

2.1 Applicable documents

AD1 19071/05/NL/CP Memorandum of Understanding between MELiSSA partners

2.2 Reference documents

3. Acronyms

CIP	Cleaning in Place
SIP	Steaming in Place
VFA	Volatile Fatty Acids



Document Identification: Detailed design CII	Type	number	Issue	Page : 6 / 90
	TN	80.242	1	

4. Update loop sizing

The photoreactor must degrade 15 g VFA/day. This should ideally be achieved through a 100% illuminated reactor set-up, as assumed for the overall loop design in TN80.241. However, such photoreactors are typically not supplied as in situ steam sterilizable equipment. Reducing the illuminated fraction of the photoreactor increases the risk of unstable behavior. Therefore, the ratio of the dark to the illuminated zone should be 20/80 at maximum or the illuminated fraction should be at least 0.8.

A lot of sensors have to be mounted on the reactor and several of them must be submerged into the photoreactor liquid phase. This will have to be accommodated through a stainless steel bottom part, which will be a major determining factor for the permanent dark zone by design. It is currently estimated that the required height for this bottom dark zone is 15 cm.

Assuming an internal diameter of 15 cm, and considering an illuminated fraction of 0.8, a photobioreactor of 75 cm height would be needed, resulting in a working volume of 13.2 l. In this case, the nominal functioning of the photobioreactor would require an incident light flux q_0 of 35-40 W/m². This corresponds to 42% of the productivity maximum which would enable to control the productivity inside the photobioreactor in a better way than e.g. at a larger volume of 18 l. This incident light flux requires about 15 halogen lamps working at 1/3 of their electrical power.

The hypothetical nominal residence time would be roughly 26 h with a possible range between 14 and 54 hours.

5. Hardware description

Compartment II is a mesophilic photoheterotrophic reactor and will receive in closed loop operation the liquid output of the waste compartment CI. The *Rhodospirillum rubrum* culture will convert volatile fatty acids (VFA) of low molecular weight. CII will be a cylindrical bioreactor, operating at 30°C. The influent is stored in an influent tank, which is cooled to prevent degradation in the buffer. From this tank, the influent is fed continuously to the illuminated reactor. The outflow is a suspension of biomass in spent liquor and is pumped to the cooled effluent buffer.

The set-up for compartment II thus consists roughly of an influent tank, a photobioreactor and an effluent tank. Within this paragraph, the hardware is described, including detailed component lists. Chapter 6 contains an extended P&ID on compartment II.

5.1 Influent tank

The influent tank is a stainless steel reactor with a double jacket. The influent tank will receive synthetic medium or effluent from CI, routed over a sanitary liquid filter. This influent is cooled, using a cooler connected to the double jacket. The feed is continuously mixed, using a magnetic coupled stirrer, to obtain a homogeneous cooled medium. The temperature is measured on-line. It is possible to drain the cooling liquid from the double jacket during steam sterilisation of the interior of the buffer. The reactor will be kept at a slight overpressure (100 mbar) using helium. This is controlled based on the foreseen pressure transmitter. Before entering the reactor, helium is



Document Identification: Detailed design CII	Type	number	Issue	Page : 7 / 90
	TN	80.242	1	

routed over a sanitary gas filter. A back-pressure valve is added in the entering gas loop to prevent the tank from overpressure. An additional relief valve is added to the tank for emergency protection. A level transmitter indicates the precise liquid height inside the buffer. As an indication and protection of equipment two additional level switches are foreseen (high and low). At the bottom of the tank, connections and valves are added for sampling and drainage of the reactor before cleaning. In case the triverter valve can be mounted close to the tank, no additional bottom tank valve will be needed. A steam sterilisable gear pump will pump the liquid into the photobioreactor, over a sanitary liquid filter. A flow transmitter measures and controls the flow rate. The bypass over the flow transmitter will be opened to guarantee sufficient flow during cleaning and sterilisation.

The different hardware items are listed in Table 1.



Document Identification:	Type	number	Issue	Page : 8 / 90
Detailed design CII	TN	80.242	1	

Table 1. Influent tank hardware. When not specified, sizes and diameters will have to be proposed by the supplier..

Tag	Purpose/description	Supplier	ref./order n°
PDV_2000_01	Pneumatically operated 2-way Sanitary Diaphragm Tank Bottom Valve, on tank bottom	KSB	SISTO-CBAV DNxx: Body material: SS 1.4435 (316L), inside Ra 0,8µm, outside Ra 3,2µm polished; Diaphragm material: TFM/EPDM 2-pieces; With position indication
PDV_2000_02 PDV_2000_03 PDV_2000_04	Pneumatically operated 3 x 2-way Sanitary Diaphragm Valve (Triverter), below tank	KSB	SISTO-CM3xx DNxx: Body material: SS 1.4435 (316L), inside Ra 0,8µm, outside Ra 3,2µm polished; Diaphragm material: TFM/EPDM 2-pieces; With position indication
PV_2000_01	Pneumatically operated 2-way Ball Valve	SWAGELOK	SS 40G-Series (SS 316), Size xx in.; With position indication
VSL2_2000_01	Tank, working volume 80 L, Stainless Steel, with double jacket, equipped with spray ball (NOZ_2400_01) for tank cleaning and stirrer (BLE_2001_01). Tank bottom connections to instrumentation and valves equipped with Millipore NovAseptic sanitary connections. Tank top connections to instrumentation and valves equipped with Tri-Clamp sanitary connections, sight-glass and light, 2 hygienic spare ports		Material: Stainless steel 316 L; Surface roughness: inside ≤ 0,8 µm, outside ≤ 1,6 µm.
BLE_2001_01	Magnetic Coupled Stirrer at a variable frequency		Stirrer, with frequency drive. Stirrer type to be specified, depends of tank dimension and medium characteristics. Stirrer range: 0 – 1000 rpm. Material: Stainless Steel 316 L, Ra ≤ 0,8 µm.
LF_2002_01	Sanitary Liquid Filter, equipped with pressure indicators on the in- and outlet	PALL	1. Filter housing: Sealkleen in-line filter housing; Filter Cartridge: SLK7001 or



Document Identification: Detailed design CII	Type	number	Issue	Page : 9 / 90
	TN	80.242	1	

			<p>SLK7002; Filter Membrane: Fluorodyne 2 DFL, sterilizing grade 0,2 µm.</p> <p>2. Filter housing: Junior B in-line filter housing; Filter Cartridge: SBF; Filter Membrane: Fluorodyne 2 DFL, sterilizing grade 0,2 µm.</p>
PDV_2002_01	Pneumatically operated 2-way Sanitary Diaphragm Valve, on top of the tank	KSB	<p>SISTO-C DNxx: Body material: SS 1.4435 (316L), inside Ra 0,8µm, outside Ra 3,2µm polished; Diaphragm material: TFM/EPDM 2-pieces; With position indication</p>
PDV_2002_02	Pneumatically operated 2-way Sanitary Diaphragm Valve, zero dead leg, before liquid filter LF_2002_01	KSB	<p>SISTO-C DNxx: Body material: SS 1.4435 (316L), inside Ra 0,8µm, outside Ra 3,2µm polished; Diaphragm material: TFM/EPDM 2-pieces; With position indication</p>
PDV_2002_03 PDV_2002_04 PDV_2002_05	Pneumatically operated 3 x 2-way Sanitary Diaphragm Valve (Triverter), before liquid filter LF_2002_01	KSB	<p>SISTO-CM3xx DNxx: Body material: SS 1.4435 (316L), inside Ra 0,8µm, outside Ra 3,2µm polished; Diaphragm material: TFM/EPDM 2-pieces; With position indication</p>
PV_2002_01	Pneumatically operated 2-way Ball Valve	SWAGELOK	<p>SS 40G-Series (SS 316), Size xx in.; With position indication</p>
HV_2003_01	Manual operated 2-way Sanitary Ball Valve	ALFA LAVAL / SVF / TVC / VNE	<p>Ball Valve, Body material: 316 L, Size xx in., Ra ≤ 0,8 µm, Tri-Clamp hygienic process connection</p>
HV_2003_02	Manual operated 2-way Sanitary Ball Valve	ALFA LAVAL / SVF / TVC / VNE	<p>Ball Valve, Body material: 316 L, Size xx in., Ra ≤ 0,8 µm, Tri-Clamp hygienic process connection</p>
HV_2003_03	Manual operated 2-way Sanitary Ball Valve	ALFA LAVAL / SVF / TVC / VNE	<p>Ball Valve, Body material: 316 L, Size xx in., Ra ≤ 0,8 µm, Tri-Clamp hygienic process connection</p>



Document Identification: Detailed design CII	Type	number	Issue	Page : 10 / 90
	TN	80.242	1	

			connection
H3V_2003_01	Manual operated 3-way Sanitary Ball Valve	SVF / VNE	Ball Valve, Body material: 316 L, Size xx in., Ra ≤ 0,8 µm, Tri-Clamp hygienic process
H3V_2003_02	Manual operated 3-way Sanitary Ball Valve	SVF / VNE	Ball Valve, Body material: 316 L, Size xx in., Ra ≤ 0,8 µm, Tri-Clamp hygienic process
HX_2003_01	Heat Exchanger influent tank	HUBER	Unichiller UC0xxTw, equipped with controller CC-Pilot "Professional"
TT_2003_01	Temperature Transmitter	E+H	Omnigrad M TR45, Stainless Steel 316 L, Ra ≤ 0,8 µm, Tri-Clamp hygienic process connection
VSSL_2003_01	Tank to collect cooling liquid during steam sterilization, Stainless Steel		Material: Stainless steel 316 L; Surface roughness: inside ≤ 1,6 µm, outside ≤ 1,6 µm; Volume tank > double jacket VSL2_2000_01.
GF_2004_01	Sanitary Gas Filter	PALL / DOMNICK HUNTER	<p>PALL</p> <ol style="list-style-type: none"> 1. Filter housing: Sealkleen in-line filter housing; Filter Cartridge: SLK7001 or SLK7002; Filter Membrane: Emflon PFR, sterilizing grade 0,2 µm. 2. Filter housing: Junior B in-line filter housing; Filter Cartridge: SBF; Filter Membrane: Emflon PFR, sterilizing grade 0,2 µm. <p>DOMNICK HUNTER</p> <ol style="list-style-type: none"> 1. Filter Housing: Demi HSI in-line filter housing; Filter Cartridge: High Flow TETPOR II, sterilizing grade 0,2 µm.
PDV_2004_01	Pneumatically operated 2-way Sanitary Diaphragm Valve, on top of the tank, after the gas filter GF_2004_01	KSB	SISTO-C DNxx: Body material: SS 1.4435 (316L), inside Ra 0,8µm, outside Ra 3,2µm polished; Diaphragm material: TFM/EPDM 2-pieces; With position indication



Document Identification: Detailed design CII	Type	number	Issue	Page : 11 / 90
	TN	80.242	1	

PT_2004_01	Pressure Transmitter	E+H	Cerabar M PMP45, Stainless Steel 316 L, Ra ≤ 0,8 µm, Tri-Clamp hygienic process connection
RV_2004_01	Pressure Relief Valve	LESER	Type 483
LS_2005_01	Level Switch Low	E+H	Liquiphant M FTL50(H), Stainless Steel 316 L, Ra ≤ 0,8 µm, Tri-Clamp hygienic process connection
LS_2005_02	Level Switch High	E+H	Liquiphant M FTL50(H), Stainless Steel 316 L, Ra ≤ 0,8 µm, Tri-Clamp hygienic process connection
LT_2005_01	Level Transmitter	E+H	Levelflex FMP53, Stainless Steel 316 L, Ra ≤ 0,8 µm, Tri-Clamp hygienic process connection
FT_2006_01	Flow Transmitter, Coriolis mass flow measuring system.	E+H	Proline Promass 83A, DN01, Ra ≤ 0,8 µm, Tri-Clamp hygienic process connection
GP_2006_01	Magnetic Drive Gear Pump with steam bypass and speed control, CIP & SIP capability	GATHER Industrie (SUURMOND)	GATHER pump unit MB1 6-19 SIP with SIP bypass diaphragm valve PDV_2006_02 and frequency drive. Flow range: 0,3-6 l/h (7,2-144 l/d). Actual range needed is 5.8-22.6 l/d.
LF_2006_01	Sanitary Liquid Filter, equipped with pressure indicators on the in- and outlet	PALL	<ol style="list-style-type: none"> Filter housing: Sealkleen in-line filter housing; Filter Cartridge: SLK7001 or SLK7002; Filter Membrane: Fluorodyne 2 DFL, sterilizing grade 0,2 µm. Filter housing: Junior B in-line filter housing; Filter Cartridge: SBF; Filter Membrane: Fluorodyne 2 DFL, sterilizing grade 0,2 µm.
PDV_2006_01	Pneumatically operated 2-way Sanitary Diaphragm Tank Bottom Valve, on tank bottom	KSB	SISTO-CBAV DNxx: Body material: SS 1.4435 (316L), inside Ra 0,8µm, outside Ra 3,2µm polished;



Document Identification: Detailed design CII	Type	number	Issue	Page : 12 / 90
	TN	80.242	1	

			Diaphragm material: TFM/EPDM 2-pieces; With position indication
PDV_2006_02	Pneumatically operated 2-way Sanitary Diaphragm Valve, bypass pump GP_2006_01	KSB	SISTO-C DNxx: Body material: SS 1.4435 (316L), inside Ra 0,8µm, outside Ra 3,2µm polished; Diaphragm material: TFM/EPDM 2-pieces; With position indication
PDV_2006_03 PDV_2006_04 PDV_2006_05	Pneumatically operated 3 x 2-way Sanitary Diaphragm Valve (Triverter), before liquid filter LF_2006_01	KSB	SISTO-CM3xx DNxx: Body material: SS 1.4435 (316L), inside Ra 0,8µm, outside Ra 3,2µm polished; Diaphragm material: TFM/EPDM 2-pieces; With position indication
PDV_2006_06 PDV_2006_07 PDV_2006_08	Pneumatically operated 3 x 2-way Sanitary Diaphragm Valve (Triverter), after liquid filter LF_2006_01	KSB	SISTO-CM3xx DNxx: Body material: SS 1.4435 (316L), inside Ra 0,8µm, outside Ra 3,2µm polished; Diaphragm material: TFM/EPDM 2-pieces; With position indication
PV_2006_01	Pneumatically operated 2-way Ball Valve	SWAGELOK	SS 40G-Series (SS 316), Size xx in.; With position indication
PV_2006_02	Pneumatically operated 2-way Ball Valve	SWAGELOK	SS 40G-Series (SS 316), Size xx in.; With position indication

Document Identification: Detailed design CII	Type	number	Issue	Page : 13 / 90
	TN	80.242	1	

5.2 Bioreactor hardware

The photobioreactor is an illuminated steam-sterilisable glass/stainless steel reactor with a double jacket. A round stainless steel top and bottom plate will be needed in order to guarantee sufficient space for all required sensors (e.g. retractable pH and biomass probes) and connections (Figure 1). The ratio in permanent dark to illuminated zone should not exceed 20/80, in order to ensure a continuous stable process.

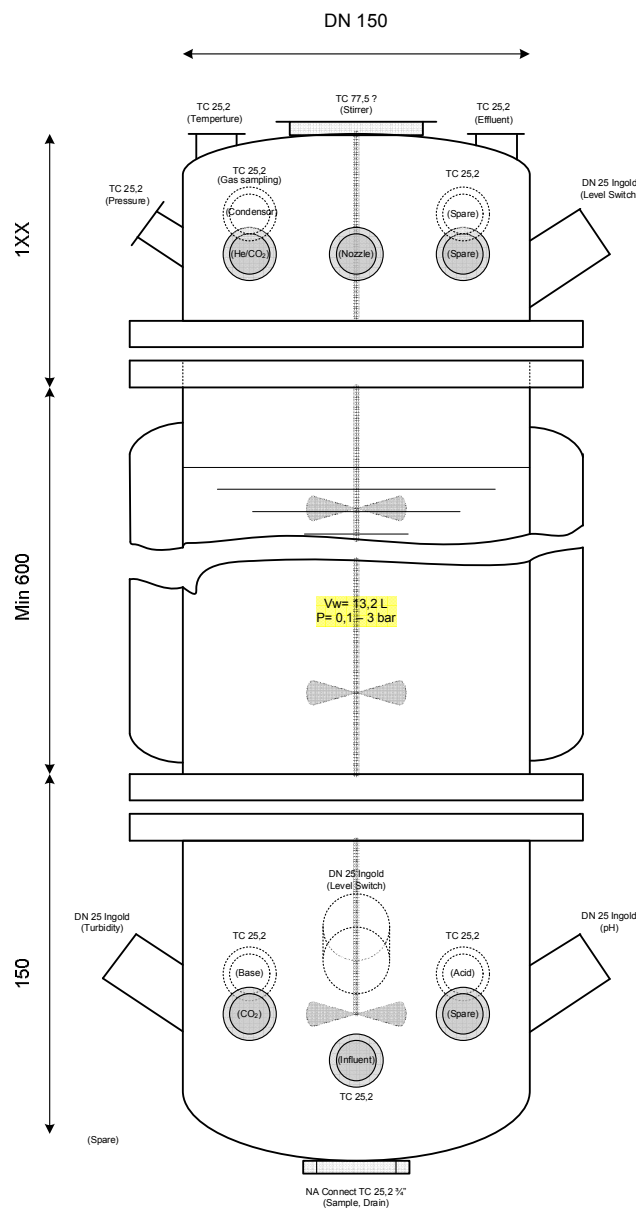


Figure 1. Drawing bioreactor - dimensions



Document Identification: Detailed design CII	Type	number	Issue	Page : 14 / 90
	TN	80.242	1	

The reactor will be kept at 30°C by means of the liquid inside the double jacket, routed over a heat exchanger. A sanitary liquid filter is added to the cooling loop in order to reduce biofilm formation inside the double jacket. Cooled influent is added to the reactor. However, due to the heat input from the halogen lamps, cooling will be required. A temperature sensor is added for measurement and control. The sensor will be insulated to ensure that it can be replaced without contamination of the photoreactor content. The pH sensor contains a temperature sensor as well, offering back-up for the control. A drain vessel on the double jacket is foreseen to remove the cooling liquid during sterilisation. A magnetic coupled stirrer is provided in order to maintain a constant temperature inside the reactor, as well as a homogeneously mixed biomass (*Rhodospirillum rubrum*).

For the inoculation of the bioreactor a connection is foreseen in the effluent piping, in order to send the inoculum backwards to the reactor, by means of overpressure, using helium.

Influent is fed at the bottom of the reactor, after filtration over a sanitary filter. A pressure indication over the liquid filter is foreseen. Baffles will be needed in the photoreactor to prevent the risk of vortex effects. The pH is measured on-line by a retractable probe. Based on the pH measurement, acid or base are automatically added for pH correction. They are stored in glass bottles and fed with peristaltic pumps over steam sterilisable sanitary liquid filters. The amount dosed will be monitored with balances. The pH will be controlled using sulphuric acid and sodium hydroxide.

The reactor will be kept at a slight overpressure (100 mbar) using helium. This is controlled based on the foreseen pressure transmitter in the reactor. Before entering the reactor, helium is sterilised over a sanitary gas filter. A back-pressure valve is added in the entering gas loop to prevent the bioreactor from overpressure. An additional relief valve is added after the condenser for emergency protection. A sanitary gas filter is positioned after the condenser, before the gas sampling connection (included in component list of gas loop, see Table 4). CO₂ can be injected at the top or the bottom of the reactor. There will be CO₂ present in the off-gas in case that mainly acetate is consumed. However when the feed of the reactor contains butyrate, propionate,... CO₂ will rather be consumed. Before being fed to the reactor, CO₂ is routed over its specific sanitary gas filter. The top level entry is on the same line as the helium injection.

Besides pH, temperature and pressure sensors, a retractable biomass sensor is foreseen in the bottom stainless steel part. A Mettler-Toledo turbidity probe is recommended with a modified wavelength to suit the specific biomass light absorption. This requires a light-emitting diode with a frequency of 950 nm instead of the standard 880 nm.

PED certification has to be provided. This certification should not only concern the whole photoreactor, but also all weldings and connections.

The bioreactor will be equipped with 15 Decostar IRC halogen lamps (Osram, 12 V, 20 W, 38°) for illumination. The selected lamps radiate around 90% of their electrical power as heat. The total amount of heat generated is therefore close to 300 W. The cool beam characteristic of the lamps



Document Identification: Detailed design CII	Type	number	Issue	Page : 15 / 90
	TN	80.242	1	

implies that only half of it is radiated towards the bioreactor. Fans may have to be provided around the reactor to ventilate the heat.

The illumination casing should be removable. The electrical circuit needs to be split up in two levels, in order to be able to illuminate only the bottom half of the reactor during start-up. The light should be dimmable and will be calibrated at start-up, using a manual light intensity measurement device.

The biomass-effluent mixture is harvested from the photobioreactor by means of a steam sterilisable gear pump. A flow transmitter is needed to guarantee a correct flow rate. The bypass over the flow transmitter will be used during cleaning and sterilisation. The level in the photoreactor is controlled by the relative ratio between the flows in and out, which are measured by flow transmitters. The suction tube in the reactor will normally be positioned below liquid level, but provides an additional safety to avoid emptying of the photoreactor when the outflow would be higher than the inflow. This does however present a risk of headspace suction into the outlet. As equipment protection a high and low level switch are foreseen in the bioreactor. On the high level switch a foam detection is advisable.

Additional ports are available on the top and bottom stainless steel parts of the bioreactor. At the bottom of the reactor a connection and valves are added for sampling and drainage of the reactor before cleaning. In case the triverter valve can be mounted close to the tank, no additional bottom tank valve will be needed.

The different hardware items are listed in Table 2.



Document Identification: Detailed design CII	Type	number	Issue	Page : 16 / 90
	TN	80.242	1	

Table 2. Bioreactor hardware. When not specified, sizes and diameters will have to be proposed by the constructor.

Tag	Purpose/description	Supplier	ref./order n°
LSS_2100_01	Light Supply System with adjustable light intensity / loop and integrated cooling system, 2 separated loops (see notes)	SUURMOND/AUTOCLAVE, DE DIETRICH	Lamps: Halogen spots OSRAM 12V, 20 W BAB 38 °. Cooling: ventilation system
PDV_2100_01	Pneumatically operated 2-way Sanitary Diaphragm Tank Bottom Valve, on reactor bottom (if possible)	KSB	SISTO-CBAV DNxx: Body material: SS 1.4435 (316L), inside Ra 0,8µm, outside Ra 3,2µm polished; Diaphragm material: TFM/EPDM 2-pieces; With position indication
PDV_2100_02 PDV_2100_03 PDV_2100_04	Pneumatically operated 3 x 2-way Sanitary Diaphragm Valve (Triverter), below reactor	KSB	SISTO-CM3xx DNxx: Body material: SS 1.4435 (316L), inside Ra 0,8µm, outside Ra 3,2µm polished; Diaphragm material: TFM/EPDM 2-pieces; With position indication
PV_2100_01	Pneumatically operated 2-way Ball Valve	SWAGELOK	SS 40G-Series (SS 316), Size xx in.; With position indication
VSL2_2100_01	In-situ sterilizable Combined Stainless/Glass reactor, working volume 13,2 L, PED certified. Equipped with spray ball (NOZ_2400_03) for tank cleaning and stirrer (BLE_2101_01). Reactor bottom connections to instrumentation and other equipment equipped with Ingold or Tri-Clamp sanitary connections. Reactorbottom to tank bottom valve (PDV_2100_01) equipped with Millipore NovAseptic sanitary connection. Tank top connections to instrumentation and valves equipped with	SUURMOND/AUTOCLAVE, DE DIETRICH	Material: Stainless steel 316 L; Surface roughness: inside ≤ 0,8 µm, outside ≤ 1,6 µm. Glass: resistible for SIP, pressure: up to 4 bar



Document Identification: Detailed design CII	Type	number	Issue	Page : 17 / 90
	TN	80.242	1	

	Tri-Clamp sanitary connections. 3 hygienic spare ports if possible.		
BLE_2101_01	Magnetic Coupled Stirrer at a variable frequency, speed in normal operation is 300 – 400 rpm	SUURMOND/AUTOCLAVE, DE DIETRICH	Stirrer, with frequency drive. Stirrer type to be specified, depends of tank dimension and medium characteristics. Stirrer range: 0 – 600 rpm. Material: Stainless Steel 316 L, Ra ≤ 0,8 µm.
HV_2103_01	Hand valve double jacket glass reactor	SUURMOND/AUTOCLAVE, DE DIETRICH	To be specified
HV_2103_02	Hand valve double jacket glass reactor	SUURMOND/AUTOCLAVE, DE DIETRICH	To be specified
HV_2103_02	Hand valve double jacket glass reactor	SUURMOND/AUTOCLAVE, DE DIETRICH	To be specified
H3V_2103_01	Manual operated 3-way Sanitary Ball Valve	SVF / VNE	Ball Valve, Body material: 316 L, Size xx in., Ra ≤ 0,8 µm, Tri-Clamp hygienic process
H3V_2103_02	Manual operated 3-way Sanitary Ball Valve	SVF / VNE	Ball Valve, Body material: 316 L, Size xx in., Ra ≤ 0,8 µm, Tri-Clamp hygienic process
HX_2103_01	Heat Exchanger bioreactor	HUBER	Unichiller UC0xxTw, equipped with controller CC-Pilot “Professional”
LF_2103_01	Liquid Filter	AMAFILTER, FILTERMAT	Filter cartridge and housing (Stainless Steel) to be specified by constructor
TT_2103_01	Temperature Transmitter	E+H	Omnigrad M TR45, Stainless Steel 316 L, Ra ≤ 0,8 µm, Tri-Clamp or Ingold fitting DN 25hygienic process connection
VSSL_2003_01	Tank to collect cooling liquid during steam sterilization, Stainless Steel		Material: Stainless steel 316 L; Surface roughness: inside ≤ 1,6 µm, outside ≤ 1,6 µm; Volume tank > double jacket VSL2_2100_01.
GF_2104_01	Sanitary Gas Filter	PALL / DOMNICK HUNTER	PALL 1. Filter housing: Sealkleen in-line



Document Identification: Detailed design CII	Type	number	Issue	Page : 18 / 90
	TN	80.242	1	

			<p>filter housing; Filter Cartridge: SLK7001 or SLK7002; Filter Membrane: Emflon PFR, sterilizing grade 0,2 µm.</p> <p>2. Filter housing: Junior B in-line filter housing; Filter Cartridge: SBF; Filter Membrane: Emflon PFR, sterilizing grade 0,2 µm.</p> <p>DOMNICK HUNTER</p> <p>1. Filter Housing: Demi HSI in-line filter housing; Filter Cartridge: High Flow TETPOR II, sterilizing grade 0,2 µm.</p>
PDV_2104_01	Pneumatically operated 2-way Sanitary Diaphragm Valve, on top of the reactor, after the gas filter GF_2104_01	KSB	SISTO-C DNxx: Body material: SS 1.4435 (316L), inside Ra 0,8µm, outside Ra 3,2µm polished; Diaphragm material: TFM/EPDM 2-pieces; With position indication
PT_2104_01	Pressure Transmitter	E+H	Cerabar M PMP45, Stainless Steel 316 L, Ra ≤ 0,8 µm, Tri-Clamp hygienic process connection
RV_2104_01	Pressure Relief Valve	LESER	Type 483, Stainless Steel 316 L
LS_2105_01	Level Switch Low	E+H	Liquiphant M FTL50(H), Ra ≤ 0,8 µm, Ingold fitting DN 25 hygienic process connection
LS_2105_02	Level Switch High, with option "Foam Detection"	E+H	Liquiphant M FTL51(H), Ra ≤ 0,8 µm, Ingold fitting DN 25 hygienic process connection
ATK_2106_01	Glass bottle for inoculum	DURAN GROUP	GLS 80 Glass bottle, 5 l, with GL 18 screw cap with 4 ports
FT_2106_01	Flow Transmitter, Coriolis mass flow	E+H	Proline Promass 83A, DN01, Ra ≤ 0,8 µm,



Document Identification: Detailed design CII	Type	number	Issue	Page : 19 / 90
	TN	80.242	1	

	measuring system.		Tri-Clamp hygienic process connection
GF_2106_01	Gas Filter	PALL, MILLIPORE	PALL Kleopak Capsule Filter with Emflon PFR Membrane, sterilizing grade 0,2 µm. MILLIPORE Opticap Capsule Filter with Aervent PTFE membrane, sterilizing grade 0,2 µm.
GP_2106_01	Magnetic Drive Gear Pump with steam bypass and speed control, CIP & SIP capability	GATHER Industrie (SUURMOND)	GATHER pump unit MB1 6-19 SIP with SIP bypass diaphragm valve PDV_2106_02 and frequency drive. Flow range: 0,3-6 l/h (7,2-144 l/d)
HDV_2106_01	Manual operated 2-way Sanitary Diaphragm Valve, zero dead leg, for steam sterilizable connection to inoculum	KSB	SISTO-C DNxx: Body material: SS 1.4435 (316L), inside Ra 0,8µm, outside Ra 3,2µm polished; Diaphragm material: TFM/EPDM 2-pieces; With position indication
HDV_2106_02	Manual operated 2-way Sanitary Diaphragm Valve, zero dead leg, for steam sterilizable connection to inoculum	KSB	SISTO-C DNxx: Body material: SS 1.4435 (316L), inside Ra 0,8µm, outside Ra 3,2µm polished; Diaphragm material: TFM/EPDM 2-pieces; With position indication
HDV_2106_03	Manual operated 2-way Sanitary Diaphragm Valve, zero dead leg, for steam sterilizable connection to inoculum	KSB	SISTO-C DNxx: Body material: SS 1.4435 (316L), inside Ra 0,8µm, outside Ra 3,2µm polished; Diaphragm material: TFM/EPDM 2-pieces; With position indication
HDV_2106_04	Manual operated 2-way Sanitary Diaphragm Valve, for steam sterilizable connection to inoculum	KSB	SISTO-C DNxx: Body material: SS 1.4435 (316L), inside Ra 0,8µm, outside Ra 3,2µm polished; Diaphragm material: TFM/EPDM 2-pieces; With position indication



Document Identification: Detailed design CII	Type	number	Issue	Page : 20 / 90
	TN	80.242	1	

PDV_2106_01	Pneumatically operated 2-way Sanitary Diaphragm Valve, on top of the reactor	KSB	SISTO-C DNxx: Body material: SS 1.4435 (316L), inside Ra 0,8µm, outside Ra 3,2µm polished; Diaphragm material: TFM/EPDM 2-pieces; With position indication
PDV_2106_02	Pneumatically operated 2-way Sanitary Diaphragm Valve, zero dead leg	KSB	SISTO-C DNxx: Body material: SS 1.4435 (316L), inside Ra 0,8µm, outside Ra 3,2µm polished; Diaphragm material: TFM/EPDM 2-pieces; With position indication
PDV_2106_03	Pneumatically operated 2-way Sanitary Diaphragm Valve, bypass pump GP_2106_01	KSB	SISTO-C DNxx: Body material: SS 1.4435 (316L), inside Ra 0,8µm, outside Ra 3,2µm polished; Diaphragm material: TFM/EPDM 2-pieces; With position indication
PDV_2106_04 PDV_2106_05 PDV_2106_06	Pneumatically operated 3 x 2-way Sanitary Diaphragm Valve (Triverter), after pump GP_2106_01	KSB	SISTO-CM3xx DNxx: Body material: SS 1.4435 (316L), inside Ra 0,8µm, outside Ra 3,2µm polished; Diaphragm material: TFM/EPDM 2-pieces; With position indication
PDV_2106_07	Pneumatically operated 2-way Sanitary Diaphragm Valve, on top of the reactor	KSB	SISTO-C DNxx: Body material: SS 1.4435 (316L), inside Ra 0,8µm, outside Ra 3,2µm polished; Diaphragm material: TFM/EPDM 2-pieces; With position indication
PV_2106_01	Pneumatically operated 2-way Ball Valve	SWAGELOK	SS 40G-Series (SS 316), x mm; With position indication
AT_2107_01	pH measurement, pH sensor with automatically retractable sterilizable housing, and position indication	METTLER TOLEDO	Sensor: InPro 3253(with integrated temperature sensor), digital sensor (ISM), length probe: 325 mm Transmitter: M400 / pH 2100 e, in conjunction with ISM sensors.



Document Identification: Detailed design CII	Type	number	Issue	Page : 21 / 90
	TN	80.242	1	

			Retractable housing: InTrac 797 e
ATK_2107_01	Glass bottle for base	DURAN GROUP	GLS 80 Glass bottle, 10 l, with GL 18 screw cap with 4 ports
ATK_2107_02	Glass bottle for acid	DURAN GROUP	GLS 80 Glass bottle, 10 l, with GL 18 screw cap with 4 ports
GF_2107_01	Sanitary Gas Filter	MILLIPORE	Aervent-50 Cartridge Filters with Aervent PTFE membrane, sterilizing grade 0,2 µm.
GF_2107_02	Sanitary Gas Filter	MILLIPORE	Aervent-50 Cartridge Filters with Aervent PTFE membrane, sterilizing grade 0,2 µm.
HDV_2107_01	Manual operated 2-way Sanitary Diaphragm Valve, zero dead leg, for steam sterilizable connection to base	KSB	SISTO-C DNxx: Body material: SS 1.4435 (316L), inside Ra 0,8µm, outside Ra 3,2µm polished; Diaphragm material: TFM/EPDM 2-pieces; With position indication
HDV_2107_02	Manual operated 2-way Sanitary Diaphragm Valve, zero dead leg, for steam sterilizable connection to base	KSB	SISTO-C DNxx: Body material: SS 1.4435 (316L), inside Ra 0,8µm, outside Ra 3,2µm polished; Diaphragm material: TFM/EPDM 2-pieces; With position indication
HDV_2107_03	Manual operated 2-way Sanitary Diaphragm Valve, zero dead leg, for steam sterilizable connection to base	KSB	SISTO-C DNxx: Body material: SS 1.4435 (316L), inside Ra 0,8µm, outside Ra 3,2µm polished; Diaphragm material: TFM/EPDM 2-pieces; With position indication
HDV_2107_04	Manual operated 2-way Sanitary Diaphragm Valve, zero dead leg, for steam sterilizable connection to acid	KSB	SISTO-C DNxx: Body material: SS 1.4435 (316L), inside Ra 0,8µm, outside Ra 3,2µm polished; Diaphragm material: TFM/EPDM 2-pieces; With position indication
HDV_2107_05	Manual operated 2-way Sanitary Diaphragm Valve, zero dead leg, for steam sterilizable	KSB	SISTO-C DNxx: Body material: SS 1.4435 (316L), inside Ra



Document Identification: Detailed design CII	Type	number	Issue	Page : 22 / 90
	TN	80.242	1	

	connection to acid		0,8µm, outside Ra 3,2µm polished; Diaphragm material: TFM/EPDM 2-pieces; With position indication
HDV_2107_06	Manual operated 2-way Sanitary Diaphragm Valve, zero dead leg, for steam sterilizable connection to acid	KSB	SISTO-C DNxx: Body material: SS 1.4435 (316L), inside Ra 0,8µm, outside Ra 3,2µm polished; Diaphragm material: TFM/EPDM 2-pieces; With position indication
HDV_2107_07	Manual operated 2-way Sanitary Diaphragm Valve to pH retractable	KSB	SISTO-C DNxx: Body material: SS 1.4435 (316L), inside Ra 0,8µm, outside Ra 3,2µm polished; Diaphragm material: TFM/EPDM 2-pieces; With position indication
HDV_2107_08	Manual operated 2-way Sanitary Diaphragm Valve to pH retractable	KSB	SISTO-C DNxx: Body material: SS 1.4435 (316L), inside Ra 0,8µm, outside Ra 3,2µm polished; Diaphragm material: TFM/EPDM 2-pieces; With position indication
HDV_2107_09	Manual operated 2-way Sanitary Diaphragm Valve to pH retractable	KSB	SISTO-C DNxx: Body material: SS 1.4435 (316L), inside Ra 0,8µm, outside Ra 3,2µm polished; Diaphragm material: TFM/EPDM 2-pieces; With position indication
HV_2107_01	Manual operated 2-way Ball Valve	SWAGELOK	SS 40G-Series (SS 316), x mm; With position indication
HV_2107_02	Manual operated 2-way Ball Valve	SWAGELOK	SS 40G-Series (SS 316), x mm; With position indication
HV_2107_03	Manual operated 2-way Ball Valve	SWAGELOK	SS 40G-Series (SS 316), x mm; With position indication
HV_2107_04	Manual operated 2-way Ball Valve	SWAGELOK	SS 40G-Series (SS 316), x mm; With position indication



Document Identification: Detailed design CII	Type	number	Issue	Page : 23 / 90
	TN	80.242	1	

LF_2107_01	Sanitary Liquid Filter	PALL	Filter housing: Junior B in-line filter housing; Filter Cartridge: SBF; Filter Membrane: Emflon PFR, sterilizing grade 0,2 µm.
LF_2107_02	Sanitary Liquid Filter	PALL	Filter housing: Junior B in-line filter housing; Filter Cartridge: SBF; Filter Membrane: Emflon PFR, sterilizing grade 0,2 µm.
NRV_2107_01	Check valve	EM-TECHNIK	Series 5R Material: PVDF
NRV_2107_02	Check valve	EM-TECHNIK	Series 5R Material: PVDF
PDV_2107_01	Pneumatically operated 2-way Sanitary Diaphragm Valve, zero dead leg, for steam sterilizable connection to base	KSB	SISTO-C DNxx: Body material: SS 1.4435 (316L), inside Ra 0,8µm, outside Ra 3,2µm polished; Diaphragm material: TFM/EPDM 2-pieces; With position indication
PDV_2107_02	Pneumatically operated 2-way Sanitary Diaphragm Valve, zero dead leg, for steam sterilizable connection to acid	KSB	SISTO-C DNxx: Body material: SS 1.4435 (316L), inside Ra 0,8µm, outside Ra 3,2µm polished; Diaphragm material: TFM/EPDM 2-pieces; With position indication
PP_2107_01	Peristaltic Pump for dosing base	WATSON MARLOW	500 Series, type 520UN/REL, IP66, fitted with LoadSure elements. Tube Material: Chem-Sure
PP_2107_02	Peristaltic Pump for dosing acid	WATSON MARLOW	500 Series, type 520UN/REL, IP66, fitted with LoadSure elements. Tube Material: Chem-Sure
WT_2107_01	Balance for base	METTLER TOLEDO	Excellence XS Series, RS232 interface and optional Ethernet
WT_2107_02	Balance for acid	METTLER TOLEDO	Excellence XS Series, RS232 interface and



Document Identification: Detailed design CII	Type	number	Issue	Page : 24 / 90
	TN	80.242	1	

			optional Ethernet
AT_2108_01	Turbidity measurement, turbidity sensor with automatically retractable sterilizable housing and position indication	METTLER TOLEDO	Sensor: InPro 8100/8200, length probe: 297 mm, adapted to wavelength 950 nm Transmitter: Trb 8300 Retractable housing: InTrac 799 e
HDV_2108_01	Manual operated 2-way Sanitary Diaphragm Valve to turbidity retractable	KSB	SISTO-C DNxx: Body material: SS 1.4435 (316L), inside Ra 0,8µm, outside Ra 3,2µm polished; Diaphragm material: TFM/EPDM 2-pieces; With position indication
HDV_2108_02	Manual operated 2-way Sanitary Diaphragm Valve to turbidity retractable	KSB	SISTO-C DNxx: Body material: SS 1.4435 (316L), inside Ra 0,8µm, outside Ra 3,2µm polished; Diaphragm material: TFM/EPDM 2-pieces; With position indication
HDV_2108_03	Manual operated 2-way Sanitary Diaphragm Valve to turbidity retractable	KSB	SISTO-C DNxx: Body material: SS 1.4435 (316L), inside Ra 0,8µm, outside Ra 3,2µm polished; Diaphragm material: TFM/EPDM 2-pieces; With position indication
HV_2108_01	Manual operated 2-way Ball Valve	SWAGELOK	SS 40G-Series (SS 316), x mm; With position indication
HV_2108_02	Manual operated 2-way Ball Valve	SWAGELOK	SS 40G-Series (SS 316), x mm; With position indication
GF_2109_01	Sanitary Gas Filter	PALL / DOMNICK HUNTER	PALL <ol style="list-style-type: none"> Filter housing: Sealkleen in-line filter housing; Filter Cartridge: SLK7001 or SLK7002; Filter Membrane: Emflon PFR, sterilizing grade 0,2 µm. Filter housing: Junior B in-line filter



Document Identification: Detailed design CII	Type	number	Issue	Page : 25 / 90
	TN	80.242	1	

			housing; Filter Cartridge: SBF; Filter Membrane: Emflon PFR, sterilizing grade 0,2 µm. DOMNICK HUNTER 1. Filter Housing: Demi HSI in-line filter housing; Filter Cartridge: High Flow TETPOR II, sterilizing grade 0,2 µm.
HDV_2109_01	Manual operated 2-way Sanitary Diaphragm Valve, after the gas filter GF_2109_01	KSB	SISTO-C DNxx: Body material: SS 1.4435 (316L), inside Ra 0,8µm, outside Ra 3,2µm polished; Diaphragm material: TFM/EPDM 2-pieces; With position indication
HDV_2109_02	Manual operated 2-way Sanitary Diaphragm Valve, after the gas filter GF_2109_01	KSB	SISTO-C DNxx: Body material: SS 1.4435 (316L), inside Ra 0,8µm, outside Ra 3,2µm polished; Diaphragm material: TFM/EPDM 2-pieces; With position indication
PDV_2109_01	Pneumatically operated 2-way Sanitary Diaphragm Valve, after the gas filter GF_2109_01	KSB	SISTO-C DNxx: Body material: SS 1.4435 (316L), inside Ra 0,8µm, outside Ra 3,2µm polished; Diaphragm material: TFM/EPDM 2-pieces; With position indication
PDV_2109_02	Pneumatically operated 2-way Sanitary Diaphragm Valve, after the gas filter GF_2109_01	KSB	SISTO-C DNxx: Body material: SS 1.4435 (316L), inside Ra 0,8µm, outside Ra 3,2µm polished; Diaphragm material: TFM/EPDM 2-pieces; With position indication



Document Identification: Detailed design CII	Type	number	Issue	Page : 26 / 90
	TN	80.242	1	

5.3 Effluent tank

From the bioreactor, the biomass/effluent mixture is pumped towards the effluent tank. Similar to the influent tank, this is a stainless steel reactor with a double jacket. The effluent is cooled, using a cooler connected to the double jacket. The biomass/effluent mixture is continuously mixed, using a magnetic coupled stirrer, to obtain a homogeneous cooled medium. The temperature is measured on-line. It is possible to drain the cooling liquid from the double-jacket during sterilisation of the interior of the buffer with steam. The reactor will be kept at a slight overpressure (100 mbar) using helium. This is controlled based on the foreseen pressure transmitter. Before entering the reactor, the helium is routed over a sanitary gas filter. A back-pressure valve is added in the entering gas loop to prevent the tank from overpressure. An additional relief valve is added to the tank for emergency protection. A level transmitter indicates the precise liquid height inside the buffer. As an indication and protection of equipment two additional level switches are foreseen (high and low). At the bottom of the tank connections and valves are added for sampling or transfer of the tank content to compartment III, or drainage of the reactor before cleaning. In case the triverter can be set close to the tank, no additional bottom tank valve will be needed.

The different hardware items are listed in Table 3.



Document Identification: Detailed design CII	Type	number	Issue	Page : 27 / 90
	TN	80.242	1	

Table 3. Effluent tank hardware. When not specified, sizes and diameters will have to be proposed by the constructor.

Tag	Purpose/description	Supplier	ref./order n°
PDV_2200_01	Pneumatically operated 2-way Sanitary Diaphragm Tank Bottom Valve, on tank bottom	KSB	SISTO-CBAV DNxx: Body material: SS 1.4435 (316L), inside Ra 0,8µm, outside Ra 3,2µm polished; Diaphragm material: TFM/EPDM 2-pieces; With position indication
PDV_2200_02 PDV_2200_03 PDV_2200_04	Pneumatically operated 3 x 2-way Sanitary Diaphragm Valve (Triverter), below tank	KSB	SISTO-CM3xx DNxx: Body material: SS 1.4435 (316L), inside Ra 0,8µm, outside Ra 3,2µm polished; Diaphragm material: TFM/EPDM 2-pieces; With position indication
PV_2200_01	Pneumatically operated 2-way Ball Valve	SWAGELOK	SS 40G-Series (SS 316), Size xx in.; With position indication
VSL2_2200_01	Tank 80 L, Stainless Steel, with double jacket, equipped with spray ball (NOZ_2400_02) for tank cleaning and stirrer (BLE_2201_01). Tank bottom connections to instrumentation and valves equipped with Millipore NovAseptic sanitary connections. Tank top connections to instrumentation and valves equipped with Tri-Clamp sanitary connections, sight-glass and light, 2 hygienic spare ports		Material: Stainless steel 316 L; Surface roughness: inside ≤ 0,8 µm, outside ≤ 1,6 µm.
BLE_2201_01	Magnetic Coupled Stirrer at a variable frequency		Stirrer, with frequency drive. Stirrer type to be specified, depends of tank dimension and medium characteristics. Stirrer range: 0 – 1000 rpm. Material: Stainless Steel 316 L, Ra ≤ 0,8 µm.



Document Identification: Detailed design CII	Type	number	Issue	Page : 28 / 90
	TN	80.242	1	

HV_2203_01	Manual operated 2-way Sanitary Ball Valve	ALFA LAVAL / SVF / TVC / VNE	Ball Valve, Body material: 316 L, Size xx in., Ra ≤ 0,8 µm, Tri-Clamp hygienic process connection
HV_2203_02	Manual operated 2-way Sanitary Ball Valve	ALFA LAVAL / SVF / TVC / VNE	Ball Valve, Body material: 316 L, Size xx in., Ra ≤ 0,8 µm, Tri-Clamp hygienic process connection
HV_2203_03	Manual operated 2-way Sanitary Ball Valve	ALFA LAVAL / SVF / TVC / VNE	Ball Valve, Body material: 316 L, Size xx in., Ra ≤ 0,8 µm, Tri-Clamp hygienic process connection
H3V_2003_01	Manual operated 3-way Sanitary Ball Valve	SVF / VNE	Ball Valve, Body material: 316 L, Size xx in., Ra ≤ 0,8 µm, Tri-Clamp hygienic process connection
H3V_2003_02	Manual operated 3-way Sanitary Ball Valve	SVF / VNE	Ball Valve, Body material: 316 L, Size xx in., Ra ≤ 0,8 µm, Tri-Clamp hygienic process connection
HX_2203_01	Heat Exchanger effluent tank	HUBER	Unichiller UC0xxTw, equipped with controller CC-Pilot "Professional"
TT_2203_01	Temperature Transmitter	E+H	Omnigrad M TR45, Stainless Steel 316 L, Ra ≤ 0,8 µm, Tri-Clamp hygienic process connection
VSSL_2103_01	Tank to collect cooling liquid during steam sterilization, Stainless Steel		Material: Stainless steel 316 L; Surface roughness: inside ≤ 1,6 µm, outside ≤ 1,6 µm; Volume tank > double jacket VSL2_2200_01.
GF_2204_01	Sanitary Gas Filter	PALL / DOMNICK HUNTER	PALL <ol style="list-style-type: none"> Filter housing: Sealkleen in-line filter housing; Filter Cartridge: SLK7001 or SLK7002; Filter Membrane: Emflon PFR, sterilizing grade 0,2 µm. Filter housing: Junior B in-line filter housing; Filter Cartridge: SBF; Filter Membrane: Emflon PFR, sterilizing grade 0,2 µm. DOMNICK HUNTER



Document Identification: Detailed design CII	Type	number	Issue	Page : 29 / 90
	TN	80.242	1	

			1. Filter Housing: Demi HSI in-line filter housing; Filter Cartridge: High Flow TETPOR II, sterilizing grade 0,2 µm.
PDV_2204_01	Pneumatically operated 2-way Sanitary Diaphragm Valve, on top of the tank, after the gas filter GF_2204_01	KSB	SISTO-C DNxx: Body material: SS 1.4435 (316L), inside Ra 0,8µm, outside Ra 3,2µm polished; Diaphragm material: TFM/EPDM 2-pieces; With position indication
PT_2204_01	Pressure Transmitter	E+H	Cerabar M PMP45, Stainless Steel 316 L, Ra ≤ 0,8 µm, Tri-Clamp hygienic process connection
RV_2204_01	Pressure Relief Valve	LESER	Type 483, Stainless Steel 316 L
LS_2205_01	Level Switch Low	E+H	Liquiphant M FTL50(H), Stainless Steel 316L, Ra ≤ 0,8 µm, Tri-Clamp hygienic process connection
LS_2205_02	Level Switch High	E+H	Liquiphant M FTL50(H), Stainless Steel, Ra ≤ 0,8 µm, Tri-Clamp hygienic process connection
LT_2205_01	Level Transmitter	E+H	Levelflex FMP53, Stainless steel 316 L, Stainless Steel 316 L, Ra ≤ 0,8 µm, Tri-Clamp hygienic process connection



Document Identification: Detailed design CII	Type	number	Issue	Page : 30 / 90
	TN	80.242	1	

5.4 Gas loop

The gas loop consists of the CO₂ and He circuits. As described in paragraph 5.2 (Bioreactor), CO₂ is routed over its dedicated sanitary gas filter before entering top or bottom of the photobioreactor. Injection will be needed depending on the specific composition of the influent. A gas flow controller is foreseen for correct dosing. Helium will be used during different operation steps. During normal operation it can be injected in the headspaces of both storage tanks and the bioreactor, in order to maintain a constant overpressure. This way, the risk of contamination is further reduced. All three tanks have their dedicated He-inlet area, split over two manual pressure regulators: a first one set at 1,5 bar for use at normal operation and for draining the volume and all piping before and after CIP, the second one set at 3,5 bar, providing He for drying all parts after SIP. Before entering the specific part of the Compartment, helium is routed over a sanitary gas filter. Excess gas is eliminated through the foreseen pressure regulators at the end of the gas lines, before the gas filters. All three tank volumes (influent, effluent and bioreactor) are equipped as well with pressure relieve valves as emergency protection to overpressure.

The different hardware items are listed in Table 4.



Document Identification: Detailed design CII	Type	number	Issue	Page : 31 / 90
	TN	80.242	1	

Table 4. Gas loop hardware. When not specified, sizes and diameters will have to be proposed by the constructor.

Tag	Purpose/description	Supplier	ref./order n°
FQRC_2300_01	Gas Flow Controller	BRONKHORST HIGH TECH	IN-FLOW series, IP65 Type: F20 + Digital Power Supply and Readout System Series E-7000 (if necessary)
GF_2300_01	Sanitary Gas Filter	PALL / DOMNICK HUNTER	PALL <ol style="list-style-type: none"> Filter housing: Sealkleen in-line filter housing; Filter Cartridge: SLK7001 or SLK7002; Filter Membrane: Emflon PFR, sterilizing grade 0,2 µm. Filter housing: Junior B in-line filter housing; Filter Cartridge: SBF; Filter Membrane: Emflon PFR, sterilizing grade 0,2 µm. DOMNICK HUNTER <ol style="list-style-type: none"> Filter Housing: Demi HSI in-line filter housing; Filter Cartridge: High Flow TETPOR II, sterilizing grade 0,2 µm.
HDV_2300_01	Manual operated 2-way Sanitary Diaphragm Valve	KSB	SISTO-C DNxx: Body material: SS 1.4435 (316L), inside Ra 0,8µm, outside Ra 3,2µm polished; Diaphragm material: TFM/EPDM 2-pieces; With position indication
HDV_2300_02	Manual operated 2-way Sanitary Diaphragm Valve	KSB	SISTO-C DNxx: Body material: SS 1.4435 (316L), inside Ra 0,8µm, outside Ra 3,2µm polished; Diaphragm material: TFM/EPDM 2-pieces; With position indication
HPCV_2300_01	Manual Pressure Regulator with integrated	TESCOM	Type: 44-3262H2x3, 0 – 6,8 barg



Document Identification: Detailed design CII	Type	number	Issue	Page : 32 / 90
	TN	80.242	1	

	Pressure Indicator, He to influent tank		Material: Stainless Steel 316 Inlet pressure: max. 34,4 barg
HPCV_2300_02	Manual Pressure Regulator with integrated Pressure Indicator, He to influent tank	TESCOM	Type: 44-3261H2x3, 0 – 3,4 barg Material: Stainless Steel 316 Inlet pressure: max. 34,4 barg
HPCV_2300_03	Manual Pressure Regulator with integrated Pressure Indicator, He to bioreactor	TESCOM	Type: 44-3262H2x3, 0 – 6,8 barg Material: Stainless Steel 316 Inlet pressure: max. 34,4 barg
HPCV_2300_04	Manual Pressure Regulator with integrated Pressure Indicator, He to bioreactor	TESCOM	Type: 44-3261H2x3, 0 – 3,4 barg Material: Stainless Steel 316 Inlet pressure: max. 34,4 barg
HPCV_2300_05	Manual Pressure Regulator with integrated Pressure Indicator, He to effluent tank	TESCOM	Type: 44-3262H2x3, 0 – 6,8 barg Material: Stainless Steel 316 Inlet pressure: max. 34,4 barg
HPCV_2300_06	Manual Pressure Regulator with integrated Pressure Indicator, He to effluent tank	TESCOM	Type: 44-3261H2x3, 0 – 3,4 barg Material: Stainless Steel 316 Inlet pressure: max. 34,4 barg
HPCV_2300_07	Manual Pressure Regulator with integrated Pressure Indicator, CO ₂ to bioreactor	TESCOM	Type: 44-3261H2x3, 0 – 3,4 barg Material: Stainless Steel 316 Inlet pressure: max. 34,4 barg
HPCV_2300_08	Manual Pressure Regulator with integrated Pressure Indicator, He to inoculum	TESCOM	Type: 44-3261H2x3, 0 – 3,4 barg Material: Stainless Steel 316 Inlet pressure: max. 34,4 barg
HPCV_2300_09	Manual Backpressure Regulator with integrated Pressure Indicator, to influent tank	TESCOM / SWAGELOK/PARKER	<ul style="list-style-type: none"> • TESCOM: Type: 44-236024, 0 – 1,7 barg / 44-4760xx, 0 – 1,0 barg • SWAGELOK: Type: KBP1COX4A5x20000, 0 – 0,68 barg • PARKER Veriflo: Type: ABP3ST1x01xx, 0 – 0,34 barg
HPCV_2300_10	Manual Backpressure Regulator with integrated Pressure Indicator, to bioreactor	TESCOM / SWAGELOK/PARKER	<ul style="list-style-type: none"> • TESCOM: Type: 44-236024, 0 – 1,7 barg / 44-4760xx, 0 – 1,0 barg



Document Identification: Detailed design CII	Type	number	Issue	Page : 33 / 90
	TN	80.242	1	

			<ul style="list-style-type: none"> • SWAGELOK: Type: KBP1C0X4A5x20000, 0 – 0,68 barg • PARKER Veriflo: Type: ABP3ST1x01xx, 0 – 0,34 barg
HPCV_2300_11	Manual Backpressure Regulator with integrated Pressure Indicator, to effluent tank	TESCOM / SWAGELOK/PARKER	<ul style="list-style-type: none"> • TESCOM: Type: 44-236024, 0 – 1,7 barg / 44-4760xx, 0 – 1,0 barg • SWAGELOK: Type: KBP1C0X4A5x20000, 0 – 0,68 barg • PARKER Veriflo: Type: ABP3ST1x01xx, 0 – 0,34 barg
HX_2300_01	Condensor	SUURMOND/AUTOCLAVE, DE DIETRICH	To be specified by constructor
HX_2300_02	Heat exchanger, using cooling liquid from the available infrastructure		
HV_2300_01	Hand valve condensor	SUURMOND/AUTOCLAVE, DE DIETRICH	To be specified by constructor
HV_2300_02	Hand valve condensor	SUURMOND/AUTOCLAVE, DE DIETRICH	To be specified by constructor
HV_2300_03	Hand valve condensor	SUURMOND/AUTOCLAVE, DE DIETRICH	To be specified by constructor
HV_2300_04	Manual operated 2-way Ball Valve, gas sample valve bioreactor	SWAGELOK	SS 40G-Series (SS 316), Size xx in.
HV_2300_05	Manual operated 2-way Ball Valve, to gas filter GF_2106_01	SWAGELOK	SS 40G-Series (SS 316), Size xx in.
PDV_2300_01	Pneumatically operated 2-way Sanitary Diaphragm Valve, to gas filter GF_2004_01	KSB	SISTO-C DNxx: Body material: SS 1.4435 (316L), inside Ra 0,8µm, outside Ra 3,2µm polished; Diaphragm material: TFM/EPDM 2-pieces; With position indication
PDV_2300_02	Pneumatically operated 2-way Sanitary Diaphragm Valve, to gas filter	KSB	SISTO-C DNxx: Body material: SS 1.4435 (316L), inside Ra



Document Identification: Detailed design CII	Type	number	Issue	Page : 34 / 90
	TN	80.242	1	

	GF_2004_01		0,8µm, outside Ra 3,2µm polished; Diaphragm material: TFM/EPDM 2-pieces; With position indication
PDV_2300_03	Pneumatically operated 2-way Sanitary Diaphragm Valve, to gas filter GF_2104_01	KSB	SISTO-C DNxx: Body material: SS 1.4435 (316L), inside Ra 0,8µm, outside Ra 3,2µm polished; Diaphragm material: TFM/EPDM 2-pieces; With position indication
PDV_2300_04	Pneumatically operated 2-way Sanitary Diaphragm Valve, to gas filter GF_2104_01	KSB	SISTO-C DNxx: Body material: SS 1.4435 (316L), inside Ra 0,8µm, outside Ra 3,2µm polished; Diaphragm material: TFM/EPDM 2-pieces; With position indication
PDV_2300_05	Pneumatically operated 2-way Sanitary Diaphragm Valve, to gas filter GF_2204_01	KSB	SISTO-C DNxx: Body material: SS 1.4435 (316L), inside Ra 0,8µm, outside Ra 3,2µm polished; Diaphragm material: TFM/EPDM 2-pieces; With position indication
PDV_2300_06	Pneumatically operated 2-way Sanitary Diaphragm Valve, to gas filter GF_2204_01	KSB	SISTO-C DNxx: Body material: SS 1.4435 (316L), inside Ra 0,8µm, outside Ra 3,2µm polished; Diaphragm material: TFM/EPDM 2-pieces; With position indication
PDV_2300_07	Pneumatically operated 2-way Sanitary Diaphragm Valve, to gas filter GF_2109_01	KSB	SISTO-C DNxx: Body material: SS 1.4435 (316L), inside Ra 0,8µm, outside Ra 3,2µm polished; Diaphragm material: TFM/EPDM 2-pieces; With position indication
PDV_2300_08	Pneumatically operated 2-way Sanitary Diaphragm Valve, to gas filter GF_2004_01	KSB	SISTO-C DNxx: Body material: SS 1.4435 (316L), inside Ra 0,8µm, outside Ra 3,2µm polished; Diaphragm material: TFM/EPDM 2-pieces;



Document Identification: Detailed design CII	Type	number	Issue	Page : 35 / 90
	TN	80.242	1	

			With position indication
PDV_2300_09	Pneumatically operated 2-way Sanitary Diaphragm Valve, to gas filter GF_2104_01	KSB	SISTO-C DNxx: Body material: SS 1.4435 (316L), inside Ra 0,8µm, outside Ra 3,2µm polished; Diaphragm material: TFM/EPDM 2-pieces; With position indication
PDV_2300_10	Pneumatically operated 2-way Sanitary Diaphragm Valve, to gas filter GF_2204_01	KSB	SISTO-C DNxx: Body material: SS 1.4435 (316L), inside Ra 0,8µm, outside Ra 3,2µm polished; Diaphragm material: TFM/EPDM 2-pieces; With position indication
PDV_2300_11	Pneumatically operated 2-way Sanitary Diaphragm Valve, to gas filter GF_2109_01	KSB	SISTO-C DNxx: Body material: SS 1.4435 (316L), inside Ra 0,8µm, outside Ra 3,2µm polished; Diaphragm material: TFM/EPDM 2-pieces; With position indication
PV_2300_01	Pneumatically operated 2-way Ball Valve	SWAGELOK	SS 40G-Series (SS 316), Size xx in.; With position indication
PV_2300_02	Pneumatically operated 2-way Ball Valve	SWAGELOK	SS 40G-Series (SS 316), Size xx in.; With position indication
PV_2300_03	Pneumatically operated 2-way Ball Valve	SWAGELOK	SS 40G-Series (SS 316), Size xx in.; With position indication



Document Identification: Detailed design CII	Type	number	Issue	Page : 36 / 90
	TN	80.242	1	

5.5 Cleaning in Place (CIP)

All parts of the installation where liquid flows, can be cleaned when needed. Cleaning solution can be added to the influent tank circuit, the bioreactor and the effluent tank and its piping. The cleaning will be semi-automated. Prior to cleaning, piping and tanks will be drained and purged using helium at 1.5 bar. Drains are foreseen at different locations to optimise this process. The cleaning solution can then be sent, for all three volumes separately, through different routes. It should be possible to clean the influent and effluent tanks separately from the bioreactor.

For the influent tank, firstly, cleaning solution can be routed, for instance, only through the connecting piping between Compartment I (or the preparation vessel) and Compartment II. The solution can be either drained, if too dirty, or recycled back to a separate mobile CIP-unit. One step further will be to clean the inlet piping, over the sanitary liquid filter, towards the influent tank. This way, the influent tank can be filled as well with cleaning solution. A recycle of the solution is foreseen at the bottom of the tank. An improved cleaning of the influent tank can be obtained by sending the cleaning solution directly through the spray ball. As a last step, cleaning solution can further be routed subsequently over the influent pump, between influent tank and bioreactor, and the sanitary liquid filter prior to recycling.

For the bioreactor, cleaning solution can be routed either backwards through the harvesting pipe or through the spray ball. The cleaning liquid can then be either sent backwards through the remaining (unclean) influent piping or through the recycle line at the bottom of the reactor.

When closing the connections towards the bioreactor, the cleaning solution can as well be routed through the effluent piping. This way, the effluent piping and pump can be cleaned. After the pump, the cleaning solution can be recycled towards the CIP unit.

For the effluent tank, cleaning solution can only be injected through the spray ball. After cleaning, the solution can be drained and recycled at the bottom of the tank.

The connections between the acid and base storage bottles and the bioreactor can be cleaned as well. This needs to be done after renewal of a bottle.

Both retractable probes on the stainless steel bottom plate of the bioreactor can be cleaned as well. This needs to be done whenever the probe has been detached from the reactor and needs to be re-entered.

Further details on CIP can be found in the different operation mode schemes and the process description (see 9). A mobile CIP unit will form part of the compartment II delivery.



Document Identification: Detailed design CII	Type	number	Issue	Page : 37 / 90
	TN	80.242	1	

Table 5. CIP hardware. When not specified, sizes and diameters will have to be proposed by the constructor.

Tag	Purpose/description	Supplier	ref./order n°
NOZ_2400_01	Spray Ball in influent tank	AWH / ALFA LAVAL	Type of spray ball is depending of the tank geometry
NOZ_2400_02	Spray Ball in effluent tank	AWH / ALFA LAVAL	Type of spray ball is depending of the tank geometry
NOZ_2400_03	Spray Ball in bioreactor	AWH / ALFA LAVAL	Type of spray ball is depending of the reactor geometry
PDV_2400_01	Pneumatically operated 2-way Sanitary Diaphragm Valve, to NOZ_2400_01	KSB	SISTO-C DN _{xx} : Body material: SS 1.4435 (316L), inside Ra 0,8µm, outside Ra 3,2µm polished; Diaphragm material: TFM/EPDM 2-pieces; With position indication
PDV_2400_02	Pneumatically operated 2-way Sanitary Diaphragm Valve, to LF_2002_01	KSB	SISTO-C DN _{xx} : Body material: SS 1.4435 (316L), inside Ra 0,8µm, outside Ra 3,2µm polished; Diaphragm material: TFM/EPDM 2-pieces; With position indication
PDV_2400_03	Pneumatically operated 2-way Sanitary Diaphragm Valve, to NOZ_2400_02	KSB	SISTO-C DN _{xx} : Body material: SS 1.4435 (316L), inside Ra 0,8µm, outside Ra 3,2µm polished; Diaphragm material: TFM/EPDM 2-pieces; With position indication
PDV_2400_04	Pneumatically operated 2-way Sanitary Diaphragm Valve, to NOZ_2400_03	KSB	SISTO-C DN _{xx} : Body material: SS 1.4435 (316L), inside Ra 0,8µm, outside Ra 3,2µm polished; Diaphragm material: TFM/EPDM 2-pieces; With position indication
PV_2400_01	Pneumatically operated 2-way Ball Valve, to influent	SWAGELOK	SS 40G-Series (SS 316), Size xx in.;



Document Identification: Detailed design CII	Type	number	Issue	Page : 38 / 90
	TN	80.242	1	

	tank		With position indication
PV_2400_02	Pneumatically operated 2-way Ball Valve, to effluent tank	SWAGELOK	SS 40G-Series (SS 316), Size xx in.; With position indication
PV_2400_03	Pneumatically operated 2-way Ball Valve, to bioreactor	SWAGELOK	SS 40G-Series (SS 316), Size xx in.; With position indication
PV_2400_04	Pneumatically operated 2-way Ball Valve, retour cleaning solution influent tank	SWAGELOK	SS 43G-Series (SS 316), Size xx in.; With position indication
PV_2400_05	Pneumatically operated 2-way Ball Valve, retour cleaning solution LF_2102_01	SWAGELOK	SS 40G-Series (SS 316), Size xx in.; With position indication
PV_2400_06	Pneumatically operated 2-way Ball Valve, retour cleaning solution bioreactor	SWAGELOK	SS 40G-Series (SS 316), Size xx in.; With position indication
PV_2400_07	Pneumatically operated 2-way Ball Valve, retour cleaning solution effluent tank	SWAGELOK	SS 40G-Series (SS 316), Size xx in.; With position indication
PV_2400_08	Pneumatically operated 2-way Ball Valve, retour cleaning solution after GP_2106_01	SWAGELOK	SS 40G-Series (SS 316), Size xx in.; With position indication
	Mobile CIP unit: <ul style="list-style-type: none"> • Mobile compact sanitary design for single use (freshly prepared CIP media); • Consisting of stirred tank for preparation of cleaning solution, volume, required flows and pressures to be defined by constructor; • CIP solution recovery system; • Easy to connect to the process unit • Material 316 L, surface roughness: inside $\leq 0,8 \mu\text{m}$, outside $\leq 1,6 \mu\text{m}$; • Two control modes (manual and automatic); • Different operation possibilities (time, temperature, volume, ...) • Temperature range: 20-70°C • Minimal energy consumption 	To be proposed by constructor	To be defined by constructor



Document Identification: Detailed design CII	Type TN	number 80.242	Issue 1	Page : 39 / 90
---	------------	-------------------------	------------	----------------

5.6 Sterilisation in Place (SIP)

To maintain sterility, SIP will be needed and will be implemented after CIP. The final design and lay-out should enable to perform the steaming adequately. An adequate temperature should be reached without any damage to e.g. filters.

The different SIP hardware items are listed in Table 6. Points of attention are the following:

- Steam traps
 - o Steam traps should be of the thermodynamic type
 - o Steam traps should not come in contact with dirty product: first a rinse through side-valves is applied
 - o A temperature measurement is connected to each steam trap
- Valves
 - o All valves in the steam line should be membrane valves
 - o Zero dead leg valves are required
 - o Overpressure valves (e.g. effluent tank) should be of a sanitary type with bellow
 - o Valves should be positioned at an angle of 23-26° for complete outflow
- Steaming
 - o Steam sterilization starts from 1 point, and goes in 1 direction, in antenna-like approach
 - o First step in SIP: dewatering of steam
 - o All piping should have a slope of 1 cm/m to allow easy outflow of condensate
 - o Cross-sterilization is provided between different parts of the set-up and for connection to previous/next compartment
- Sensors should be mounted at a $H < 3D$ to avoid dead zones

Further details on SIP can be found in the different operation mode schemes and the process description (see 9).



Document Identification:	Type	number	Issue	Page : 40 / 90
Detailed design CII	TN	80.242	1	

Table 6. SIP hardware. When not specified, sizes and diameters will have to be proposed by the constructor.

Tag	Purpose/description	Supplier	ref./order n°
HDV_2500_01	Manual operated 2-way Sanitary Diaphragm Valve, zero dead leg, in base dosing line	KSB	SISTO-C DNxx: Body material: SS 1.4435 (316L), inside Ra 0,8µm, outside Ra 3,2µm polished; Diaphragm material: TFM/EPDM 2-pieces; With position indication
HDV_2500_02	Manual operated 2-way Sanitary Diaphragm Valve, zero dead leg, in acid dosing line	KSB	SISTO-C DNxx: Body material: SS 1.4435 (316L), inside Ra 0,8µm, outside Ra 3,2µm polished; Diaphragm material: TFM/EPDM 2-pieces; With position indication
HDV_2500_03	Manual operated 2-way Sanitary Diaphragm Valve, zero dead leg, connected to retractable for pH sensor AT_2107_01	KSB	SISTO-C DNxx: Body material: SS 1.4435 (316L), inside Ra 0,8µm, outside Ra 3,2µm polished; Diaphragm material: TFM/EPDM 2-pieces; With position indication
HDV_2500_04	Manual operated 2-way Sanitary Diaphragm Valve, zero dead leg, connected to retractable for turbidity sensor AT_2108_01	KSB	SISTO-C DNxx: Body material: SS 1.4435 (316L), inside Ra 0,8µm, outside Ra 3,2µm polished; Diaphragm material: TFM/EPDM 2-pieces; With position indication
HV_2500_01	Manual operated 2-way Ball Valve	SWAGELOK	SS 60T-Series (SS 316), Size xx in.;
HV_2500_02	Manual operated 2-way Ball Valve	SWAGELOK	SS 60T-Series (SS 316), Size xx in.;
HV_2500_03	Manual operated 2-way Ball Valve	SWAGELOK	SS 60T-Series (SS 316), Size xx in.;
PDV_2500_01	Pneumatically operated 2-way Sanitary Diaphragm Valve, before gas filter GF_2004_01	KSB	SISTO-C DNxx: Body material: SS 1.4435 (316L), inside Ra 0,8µm, outside Ra 3,2µm polished; Diaphragm material: TFM/EPDM 2-pieces;



Document Identification: Detailed design CII	Type	number	Issue	Page : 41 / 90
	TN	80.242	1	

			With position indication
PDV_2500_02	Pneumatically operated 2-way Sanitary Diaphragm Valve, after gas filter GF_2004_01	KSB	SISTO-C DNxx: Body material: SS 1.4435 (316L), inside Ra 0,8µm, outside Ra 3,2µm polished; Diaphragm material: TFM/EPDM 2-pieces; With position indication
PDV_2500_03	Pneumatically operated 2-way Sanitary Diaphragm Valve, before gas filter GF_2104_01	KSB	SISTO-C DNxx: Body material: SS 1.4435 (316L), inside Ra 0,8µm, outside Ra 3,2µm polished; Diaphragm material: TFM/EPDM 2-pieces; With position indication
PDV_2500_04	Pneumatically operated 2-way Sanitary Diaphragm Valve, after gas filter GF_2104_01	KSB	SISTO-C DNxx: Body material: SS 1.4435 (316L), inside Ra 0,8µm, outside Ra 3,2µm polished; Diaphragm material: TFM/EPDM 2-pieces; With position indication
PDV_2500_05	Pneumatically operated 2-way Sanitary Diaphragm Valve, before gas filter GF_2204_01	KSB	SISTO-C DNxx: Body material: SS 1.4435 (316L), inside Ra 0,8µm, outside Ra 3,2µm polished; Diaphragm material: TFM/EPDM 2-pieces; With position indication
PDV_2500_06	Pneumatically operated 2-way Sanitary Diaphragm Valve, after gas filter GF_2204_01	KSB	SISTO-C DNxx: Body material: SS 1.4435 (316L), inside Ra 0,8µm, outside Ra 3,2µm polished; Diaphragm material: TFM/EPDM 2-pieces; With position indication
PDV_2500_07	Pneumatically operated 2-way Sanitary Diaphragm Valve, before gas filter GF_2109_01	KSB	SISTO-C DNxx: Body material: SS 1.4435 (316L), inside Ra 0,8µm, outside Ra 3,2µm polished; Diaphragm material: TFM/EPDM 2-pieces; With position indication



Document Identification: Detailed design CII	Type	number	Issue	Page : 42 / 90
	TN	80.242	1	

PDV_2500_08	Pneumatically operated 2-way Sanitary Diaphragm Valve, after gas filter GF_2109_01	KSB	SISTO-C DNxx: Body material: SS 1.4435 (316L), inside Ra 0,8µm, outside Ra 3,2µm polished; Diaphragm material: TFM/EPDM 2-pieces; With position indication
PDV_2500_09	Pneumatically operated 2-way Sanitary Diaphragm Valve, before liquid filter LF_2002_01	KSB	SISTO-C DNxx: Body material: SS 1.4435 (316L), inside Ra 0,8µm, outside Ra 3,2µm polished; Diaphragm material: TFM/EPDM 2-pieces; With position indication
PDV_2500_10	Pneumatically operated 2-way Sanitary Diaphragm Valve, zero dead leg, after liquid filter LF_2002_01	KSB	SISTO-C DNxx: Body material: SS 1.4435 (316L), inside Ra 0,8µm, outside Ra 3,2µm polished; Diaphragm material: TFM/EPDM 2-pieces; With position indication
PDV_2500_11	Pneumatically operated 2-way Sanitary Diaphragm Valve, before liquid filter LF_2102_01	KSB	SISTO-C DNxx: Body material: SS 1.4435 (316L), inside Ra 0,8µm, outside Ra 3,2µm polished; Diaphragm material: TFM/EPDM 2-pieces; With position indication
PDV_2500_12	Pneumatically operated 2-way Sanitary Diaphragm Valve, zero dead leg, after gear pump GP_2106_01 and before effluent tank	KSB	SISTO-C DNxx: Body material: SS 1.4435 (316L), inside Ra 0,8µm, outside Ra 3,2µm polished; Diaphragm material: TFM/EPDM 2-pieces; With position indication
PDV_2500_13	Pneumatically operated 2-way Sanitary Diaphragm Valve, zero dead leg, after influent tank	KSB	SISTO-C DNxx: Body material: SS 1.4435 (316L), inside Ra 0,8µm, outside Ra 3,2µm polished; Diaphragm material: TFM/EPDM 2-pieces; With position indication
PDV_2500_14	Pneumatically operated 2-way Sanitary Diaphragm Valve, zero dead leg, after liquid filter LF_2102_01	KSB	SISTO-C DNxx: Body material: SS 1.4435 (316L), inside Ra 0,8µm,



Document Identification: Detailed design CII	Type	number	Issue	Page : 43 / 90
	TN	80.242	1	

			outside Ra 3,2µm polished; Diaphragm material: TFM/EPDM 2-pieces; With position indication
PDV_2500_15	Pneumatically operated 2-way Sanitary Diaphragm Valve, zero dead leg, after bioreactor	KSB	SISTO-C DNxx: Body material: SS 1.4435 (316L), inside Ra 0,8µm, outside Ra 3,2µm polished; Diaphragm material: TFM/EPDM 2-pieces; With position indication
PDV_2500_16	Pneumatically operated 2-way Sanitary Diaphragm Valve, zero dead leg, after effluent tank	KSB	SISTO-C DNxx: Body material: SS 1.4435 (316L), inside Ra 0,8µm, outside Ra 3,2µm polished; Diaphragm material: TFM/EPDM 2-pieces; With position indication
PDV_2500_17	Pneumatically operated 2-way Sanitary Diaphragm Valve, zero dead leg, before influent tank	KSB	SISTO-C DNxx: Body material: SS 1.4435 (316L), inside Ra 0,8µm, outside Ra 3,2µm polished; Diaphragm material: TFM/EPDM 2-pieces; With position indication
PDV_2500_18	Pneumatically operated 2-way Sanitary Diaphragm Valve, zero dead leg, after interface CII-01	KSB	SISTO-C DNxx: Body material: SS 1.4435 (316L), inside Ra 0,8µm, outside Ra 3,2µm polished; Diaphragm material: TFM/EPDM 2-pieces; With position indication
PDV_2500_19	Pneumatically operated 2-way Sanitary Diaphragm Valve, to influent tank	KSB	SISTO-C DNxx: Body material: SS 1.4435 (316L), inside Ra 0,8µm, outside Ra 3,2µm polished; Diaphragm material: TFM/EPDM 2-pieces; With position indication
PDV_2500_20	Pneumatically operated 2-way Sanitary Diaphragm Valve, to bioreactor	KSB	SISTO-C DNxx: Body material: SS 1.4435 (316L), inside Ra 0,8µm, outside Ra 3,2µm polished; Diaphragm material: TFM/EPDM 2-pieces;



Document Identification: Detailed design CII	Type	number	Issue	Page : 44 / 90
	TN	80.242	1	

			With position indication
PDV_2500_21	Pneumatically operated 2-way Sanitary Diaphragm Valve, to effluent tank	KSB	SISTO-C DNxx: Body material: SS 1.4435 (316L), inside Ra 0,8µm, outside Ra 3,2µm polished; Diaphragm material: TFM/EPDM 2-pieces; With position indication
PDV_2500_22	Pneumatically operated 2-way Sanitary Diaphragm Valve, zero dead leg, before pump GP_2006_01	KSB	SISTO-C DNxx: Body material: SS 1.4435 (316L), inside Ra 0,8µm, outside Ra 3,2µm polished; Diaphragm material: TFM/EPDM 2-pieces; With position indication
PDV_2500_23	Pneumatically operated 2-way Sanitary Diaphragm Valve, after gas filter GF_2300_01	KSB	SISTO-C DNxx: Body material: SS 1.4435 (316L), inside Ra 0,8µm, outside Ra 3,2µm polished; Diaphragm material: TFM/EPDM 2-pieces; With position indication
PDV_2500_24	Pneumatically operated 2-way Sanitary Diaphragm Valve, zero dead leg, before flow transmitter FT_2006_01	KSB	SISTO-C DNxx: Body material: SS 1.4435 (316L), inside Ra 0,8µm, outside Ra 3,2µm polished; Diaphragm material: TFM/EPDM 2-pieces; With position indication
PDV_2500_25	Pneumatically operated 2-way Sanitary Diaphragm Valve, zero dead leg, after flow transmitter FT_2006_01	KSB	SISTO-C DNxx: Body material: SS 1.4435 (316L), inside Ra 0,8µm, outside Ra 3,2µm polished; Diaphragm material: TFM/EPDM 2-pieces; With position indication
PDV_2500_26	Pneumatically operated 2-way Sanitary Diaphragm Valve, zero dead leg, before flow transmitter FT_2106_01	KSB	SISTO-C DNxx: Body material: SS 1.4435 (316L), inside Ra 0,8µm, outside Ra 3,2µm polished; Diaphragm material: TFM/EPDM 2-pieces; With position indication



Document Identification: Detailed design CII	Type	number	Issue	Page : 45 / 90
	TN	80.242	1	

PDV_2500_27	Pneumatically operated 2-way Sanitary Diaphragm Valve, zero dead leg, after flow transmitter FT_2106_01	KSB	SISTO-C DNxx: Body material: SS 1.4435 (316L), inside Ra 0,8µm, outside Ra 3,2µm polished; Diaphragm material: TFM/EPDM 2-pieces; With position indication
PV_2500_01	Pneumatically operated 2-way Ball Valve, to gas filter GF_2004_01	SWAGELOK	SS 60T-Series (SS 316), Size xx in.; With position indication
PV_2500_02	Pneumatically operated 2-way Ball Valve, to gas filter GF_2104_01	SWAGELOK	SS 60T-Series (SS 316), Size xx in.; With position indication
PV_2500_03	Pneumatically operated 2-way Ball Valve, to gas filter GF_2204_01	SWAGELOK	SS 60T-Series (SS 316), Size xx in.; With position indication
PV_2500_04	Pneumatically operated 2-way Ball Valve, to gas filter GF_2109_01	SWAGELOK	SS 60T-Series (SS 316), Size xx in.; With position indication
SF_2500_01	Balanced Pressure Thermostatic Steam Trap	SPIRAX SARCO	MST21, Stainless Steel, Size xx in.
SF_2500_02	Balanced Pressure Thermostatic Steam Trap	SPIRAX SARCO	MST21, Stainless Steel, Size xx in.
SF_2500_03	Balanced Pressure Thermostatic Steam Trap	SPIRAX SARCO	MST21, Stainless Steel, Size xx in.
SF_2500_04	Balanced Pressure Thermostatic Steam Trap	SPIRAX SARCO	MST21, Stainless Steel, Size xx in.
SF_2500_05	Balanced Pressure Thermostatic Steam Trap	SPIRAX SARCO	MST21, Stainless Steel, Size xx in.
SF_2500_06	Balanced Pressure Thermostatic Steam Trap	SPIRAX SARCO	MST21, Stainless Steel, Size xx in.
SF_2500_07	Balanced Pressure Thermostatic Steam Trap	SPIRAX SARCO	MST21, Stainless Steel, Size xx in.
SF_2500_08	Balanced Pressure Thermostatic Steam Trap	SPIRAX SARCO	MST21, Stainless Steel, Size xx in.
SF_2500_09	Balanced Pressure Thermostatic Steam Trap	SPIRAX SARCO	MST21, Stainless Steel, Size xx in.
SF_2500_10	Balanced Pressure Thermostatic Steam Trap	SPIRAX SARCO	MST21, Stainless Steel, Size xx in.
SF_2500_11	Balanced Pressure Thermostatic Steam Trap	SPIRAX SARCO	MST21, Stainless Steel, Size xx in.
SF_2500_12	Balanced Pressure Thermostatic Steam Trap	SPIRAX SARCO	MST21, Stainless Steel, Size xx in.
SF_2500_13	Balanced Pressure Thermostatic Steam Trap	SPIRAX SARCO	MST21, Stainless Steel, Size xx in.
SF_2500_14	Balanced Pressure Thermostatic Steam Trap	SPIRAX SARCO	MST21, Stainless Steel, Size xx in.
SF_2500_15	Balanced Pressure Thermostatic Steam Trap	SPIRAX SARCO	MST21, Stainless Steel, Size xx in.
SF_2500_16	Balanced Pressure Thermostatic Steam Trap	SPIRAX SARCO	MST21, Stainless Steel, Size xx in.
SF_2500_17	Balanced Pressure Thermostatic Steam Trap	SPIRAX SARCO	MST21, Stainless Steel, Size xx in.



Document Identification: Detailed design CII	Type	number	Issue	Page : 46 / 90
	TN	80.242	1	

SF_2500_18	Balanced Pressure Thermostatic Steam Trap	SPIRAX SARCO	MST21, Stainless Steel, Size xx in.
SF_2500_19	Balanced Pressure Thermostatic Steam Trap	SPIRAX SARCO	MST21, Stainless Steel, Size xx in.
SF_2500_20	Balanced Pressure Thermostatic Steam Trap	SPIRAX SARCO	MST21, Stainless Steel, Size xx in.
SF_2500_21	Balanced Pressure Thermostatic Steam Trap	SPIRAX SARCO	MST21, Stainless Steel, Size xx in.
SF_2500_22	Balanced Pressure Thermostatic Steam Trap	SPIRAX SARCO	MST21, Stainless Steel, Size xx in.
SF_2500_23	Balanced Pressure Thermostatic Steam Trap	SPIRAX SARCO	MST21, Stainless Steel, Size xx in.
SF_2500_24	Balanced Pressure Thermostatic Steam Trap	SPIRAX SARCO	MST21, Stainless Steel, Size xx in.
SF_2500_25	Balanced Pressure Thermostatic Steam Trap	SPIRAX SARCO	MST21, Stainless Steel, Size xx in.
TT_2500_01	Temperature Transmitter	E+H	Easytemp 470P, Stainless Steel 316 L, Ra ≤ 0,8 μm, Tri-Clamp hygienic process connection, length of the probe to be specified
TT_2500_02	Temperature Transmitter	E+H	Easytemp 470P, Stainless Steel 316 L, Ra ≤ 0,8 μm, Tri-Clamp hygienic process connection, length of the probe to be specified
TT_2500_03	Temperature Transmitter	E+H	Easytemp 470P, Stainless Steel 316 L, Ra ≤ 0,8 μm, Tri-Clamp hygienic process connection, length of the probe to be specified
TT_2500_04	Temperature Transmitter	E+H	Easytemp 470P, Stainless Steel 316 L, Ra ≤ 0,8 μm, Tri-Clamp hygienic process connection, length of the probe to be specified
TT_2500_05	Temperature Transmitter	E+H	Easytemp 470P, Stainless Steel 316 L, Ra ≤ 0,8 μm, Tri-Clamp hygienic process connection, length of the probe to be specified
TT_2500_06	Temperature Transmitter	E+H	Easytemp 470P, Stainless Steel 316 L, Ra ≤ 0,8 μm, Tri-Clamp hygienic process connection, length of the probe to be specified
TT_2500_07	Temperature Transmitter	E+H	Easytemp 470P, Stainless Steel 316 L, Ra ≤ 0,8 μm, Tri-Clamp hygienic process connection, length of the probe to be specified
TT_2500_08	Temperature Transmitter	E+H	Easytemp 470P, Stainless Steel 316 L, Ra ≤ 0,8 μm, Tri-Clamp hygienic process connection, length of



Document Identification: Detailed design CII	Type	number	Issue	Page : 47 / 90
	TN	80.242	1	

			the probe to be specified
TT_2500_09	Temperature Transmitter	E+H	Easytemp 470P, Stainless Steel 316 L, Ra ≤ 0,8 μm, Tri-Clamp hygienic process connection, length of the probe to be specified
TT_2500_10	Temperature Transmitter	E+H	Easytemp 470P, Stainless Steel 316 L, Ra ≤ 0,8 μm, Tri-Clamp hygienic process connection, length of the probe to be specified
TT_2500_11	Temperature Transmitter	E+H	Easytemp 470P, Stainless Steel 316 L, Ra ≤ 0,8 μm, Tri-Clamp hygienic process connection, length of the probe to be specified
TT_2500_12	Temperature Transmitter	E+H	Easytemp 470P, Stainless Steel 316 L, Ra ≤ 0,8 μm, Tri-Clamp hygienic process connection, length of the probe to be specified
TT_2500_13	Temperature Transmitter	E+H	Easytemp 470P, Stainless Steel 316 L, Ra ≤ 0,8 μm, Tri-Clamp hygienic process connection, length of the probe to be specified
TT_2500_14	Temperature Transmitter	E+H	Easytemp 470P, Stainless Steel 316 L, Ra ≤ 0,8 μm, Tri-Clamp hygienic process connection, length of the probe to be specified
TT_2500_15	Temperature Transmitter	E+H	Easytemp 470P, Stainless Steel 316 L, Ra ≤ 0,8 μm, Tri-Clamp hygienic process connection, length of the probe to be specified
TT_2500_16	Temperature Transmitter	E+H	Easytemp 470P, Stainless Steel 316 L, Ra ≤ 0,8 μm, Tri-Clamp hygienic process connection, length of the probe to be specified
TT_2500_17	Temperature Transmitter	E+H	Easytemp 470P, Stainless Steel 316 L, Ra ≤ 0,8 μm, Tri-Clamp hygienic process connection, length of the probe to be specified
TT_2500_18	Temperature Transmitter	E+H	Easytemp 470P, Stainless Steel 316 L, Ra ≤ 0,8 μm, Tri-Clamp hygienic process connection, length of the probe to be specified



Document Identification: Detailed design CII	Type	number	Issue	Page : 48 / 90
	TN	80.242	1	

TT_2500_19	Temperature Transmitter	E+H	Easytemp 470P, Stainless Steel 316 L, Ra ≤ 0,8 µm, Tri-Clamp hygienic process connection, length of the probe to be specified
TT_2500_20	Temperature Transmitter	E+H	Easytemp 470P, Stainless Steel 316 L, Ra ≤ 0,8 µm, Tri-Clamp hygienic process connection, length of the probe to be specified
TT_2500_21	Temperature Transmitter	E+H	Easytemp 470P, Stainless Steel 316 L, Ra ≤ 0,8 µm, Tri-Clamp hygienic process connection, length of the probe to be specified
TT_2500_22	Temperature Transmitter	E+H	Easytemp 470P, Stainless Steel 316 L, Ra ≤ 0,8 µm, Tri-Clamp hygienic process connection, length of the probe to be specified
TT_2500_23	Temperature Transmitter	E+H	Easytemp 470P, Stainless Steel 316 L, Ra ≤ 0,8 µm, Tri-Clamp hygienic process connection, length of the probe to be specified
TT_2500_24	Temperature Transmitter	E+H	Easytemp 470P, Stainless Steel 316 L, Ra ≤ 0,8 µm, Tri-Clamp hygienic process connection, length of the probe to be specified
TT_2500_25	Temperature Transmitter	E+H	Easytemp 470P, Stainless Steel 316 L, Ra ≤ 0,8 µm, Tri-Clamp hygienic process connection, length of the probe to be specified



Document Identification:	Type	number	Issue	Page : 49 / 90
Detailed design CII	TN	80.242	1	

6. P&ID

Table 7 provides an overview of the different loops in the system, translated in the used tag numbering.



Document Identification: Detailed design CII	Type	number	Issue	Page : 51 / 90
	TN	80.242	1	

Table 7. Control loops in CII

BELISSIMA		Control loops definition for CII
Control Loop Number	Control Loop Name	Location
2000	Influent General	Influent Tank
2001	Influent Agitator	Influent Tank
2002	Influent feeding (CI)	Influent Tank
2003	Influent Temperature	Influent Tank
2004	Influent Pressure	Influent Tank
2005	Influent Level	Influent Tank
2006	Influent Photobioreactor feeding	Influent Tank
2100	Photobioreactor General	Bioreactor
2101	Photobioreactor Agitator	Bioreactor
2103	Photobioreactor Temperature	Bioreactor
2104	Photobioreactor Pressure	Bioreactor
2105	Photobioreactor Level	Bioreactor
2106	Photobioreactor Effluent withdrawal	Bioreactor
2107	Photobioreactor pH	Bioreactor
2108	Photobioreactor Turbidity	Bioreactor
2200	Effluent General	Effluent Tank
2201	Effluent Agitator	Effluent Tank
2203	Effluent Temperature	Effluent Tank
2204	Effluent Pressure	Effluent Tank
2205	Effluent Level	Effluent Tank
2300	Gas Loop General	Gas Loop
2400	CIP General	CIP
2500	SIP General	SIP



Document Identification:
Detailed design CII

Type
TN

number
80.242

Issue
1

Page : 52 / 90

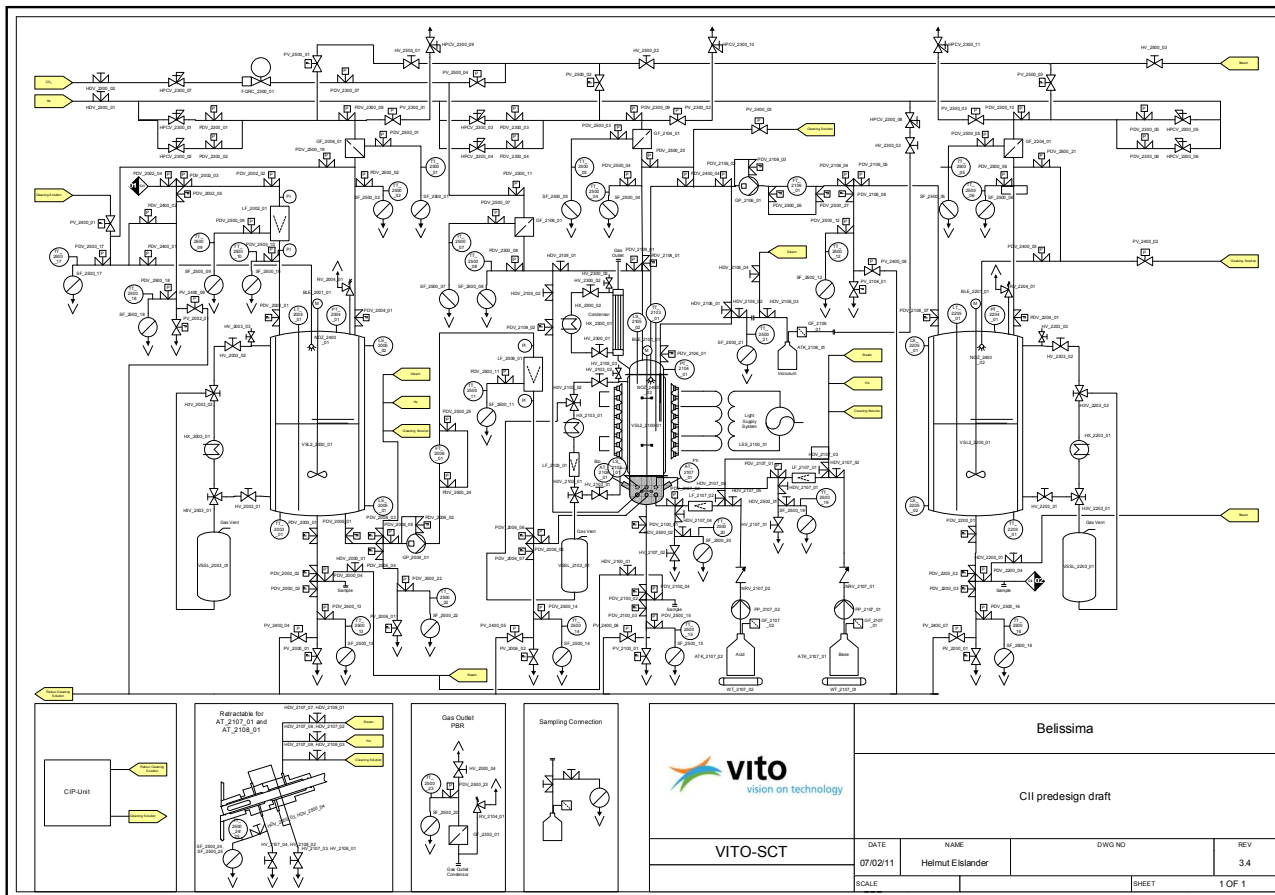


Figure 2. P&ID CII



Document Identification:
Detailed design CII

Type
TN

number
80.242

Issue
1

Page : 53 / 90

7. Different operation modes

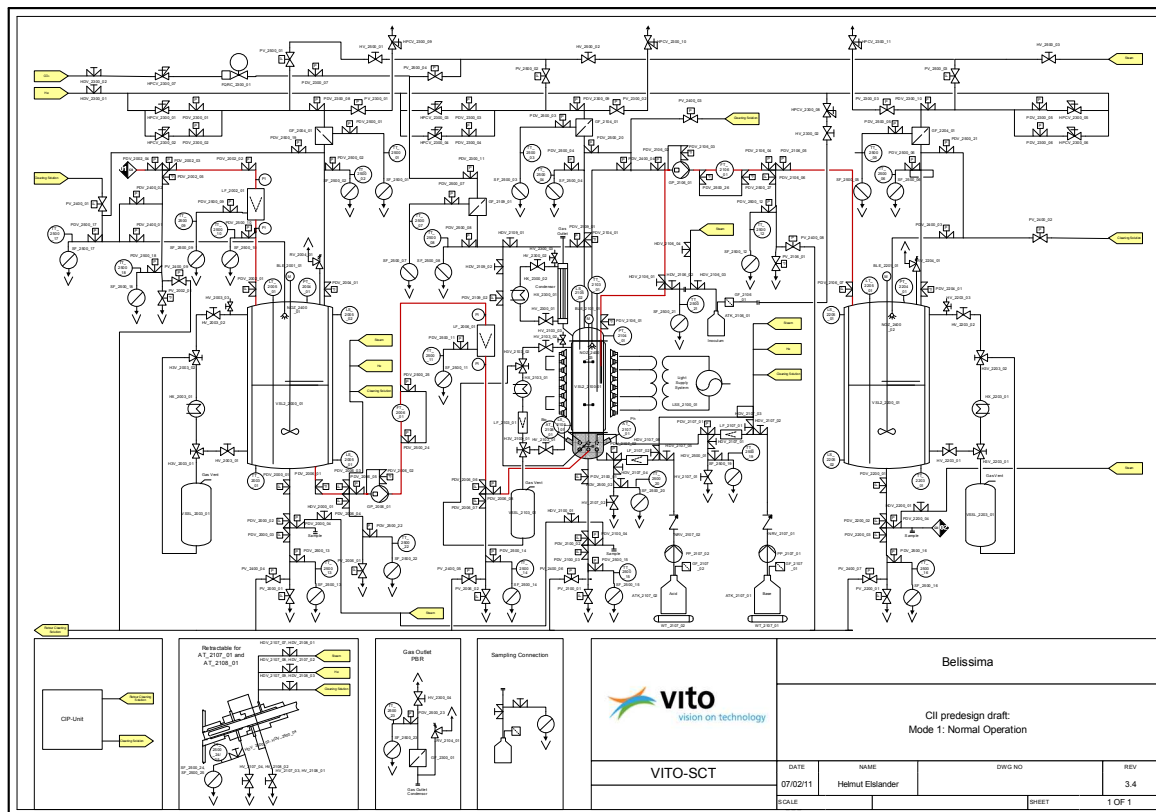


Figure 3. Mode 1: Normal operation



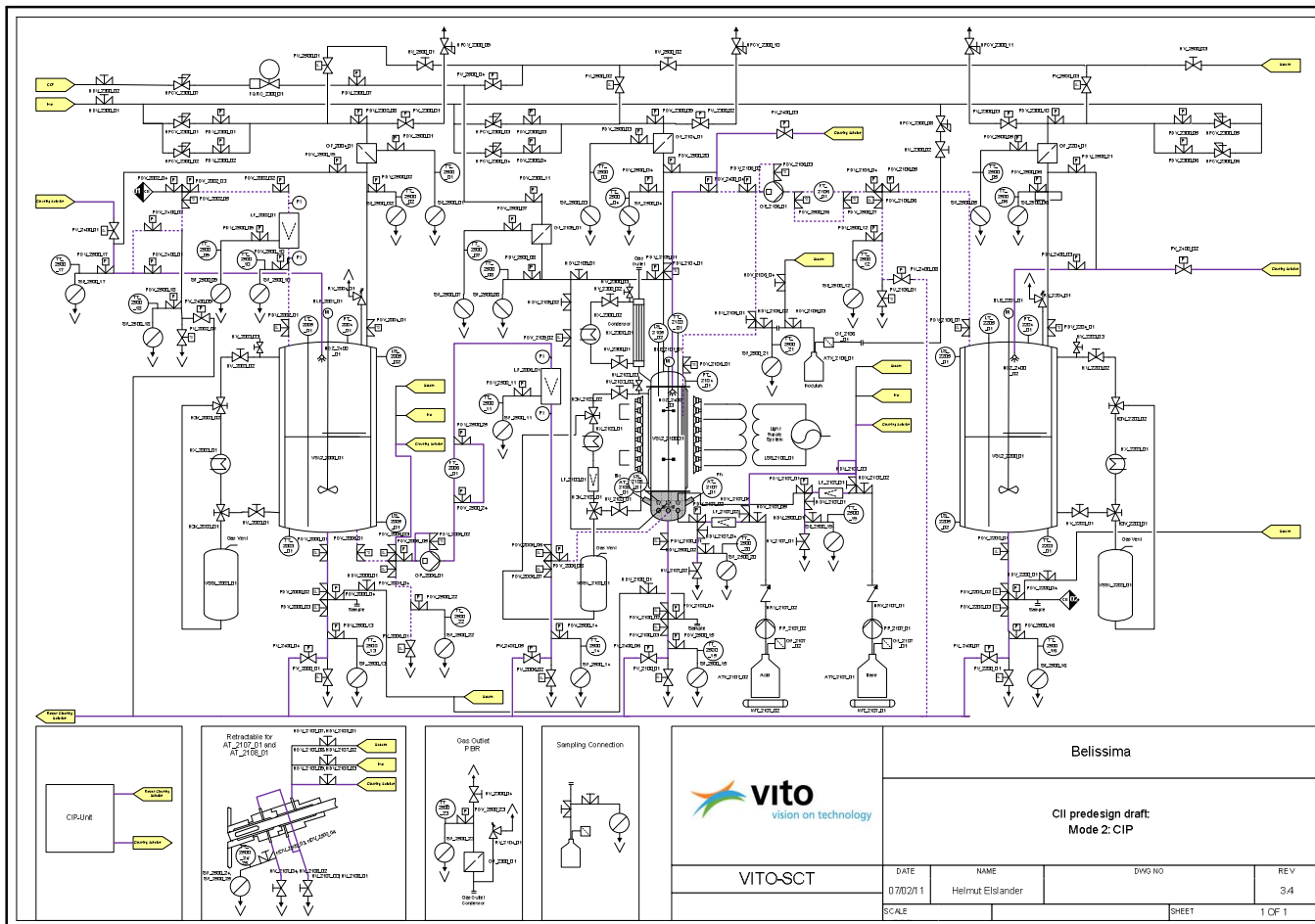
Document Identification:
Detailed design CII

Type
TN

number
80.242

Issue
1

Page : 54 / 90



Belissima

CII predesign draft:
Mode 2: CIP

VITO-SCT

DATE	NAME	DWG NO	REV
07/02/11	Helmut Eislander		3.4
SCALE		SHEET	1 OF 1

Figure 4. Mode 2: CIP



Document Identification:
Detailed design CII

Type
TN

number
80.242

Issue
1

Page : 55 / 90

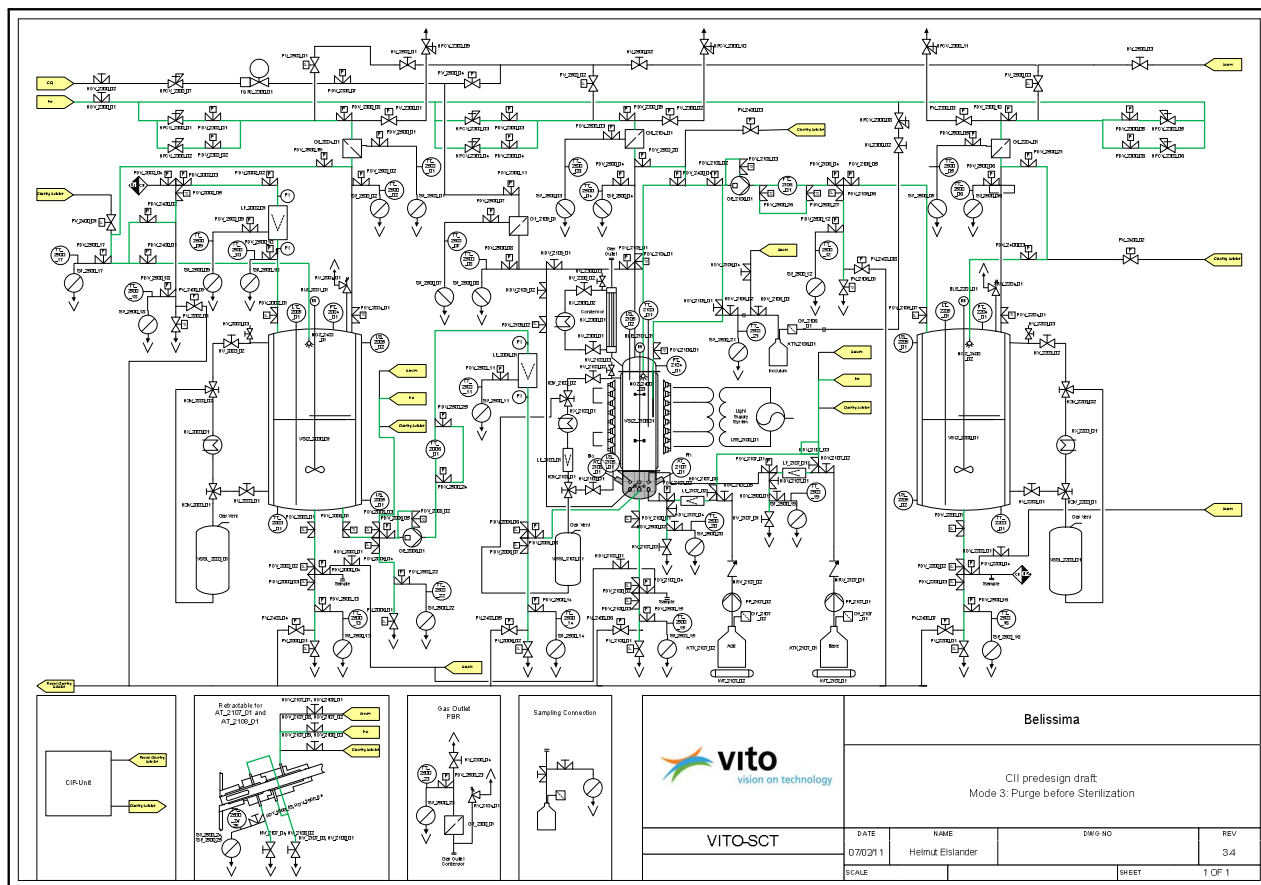


Figure 5. Mode 3: Purge



Document Identification:
Detailed design CII

Type
TN

number
80.242

Issue
1

Page : 56 / 90

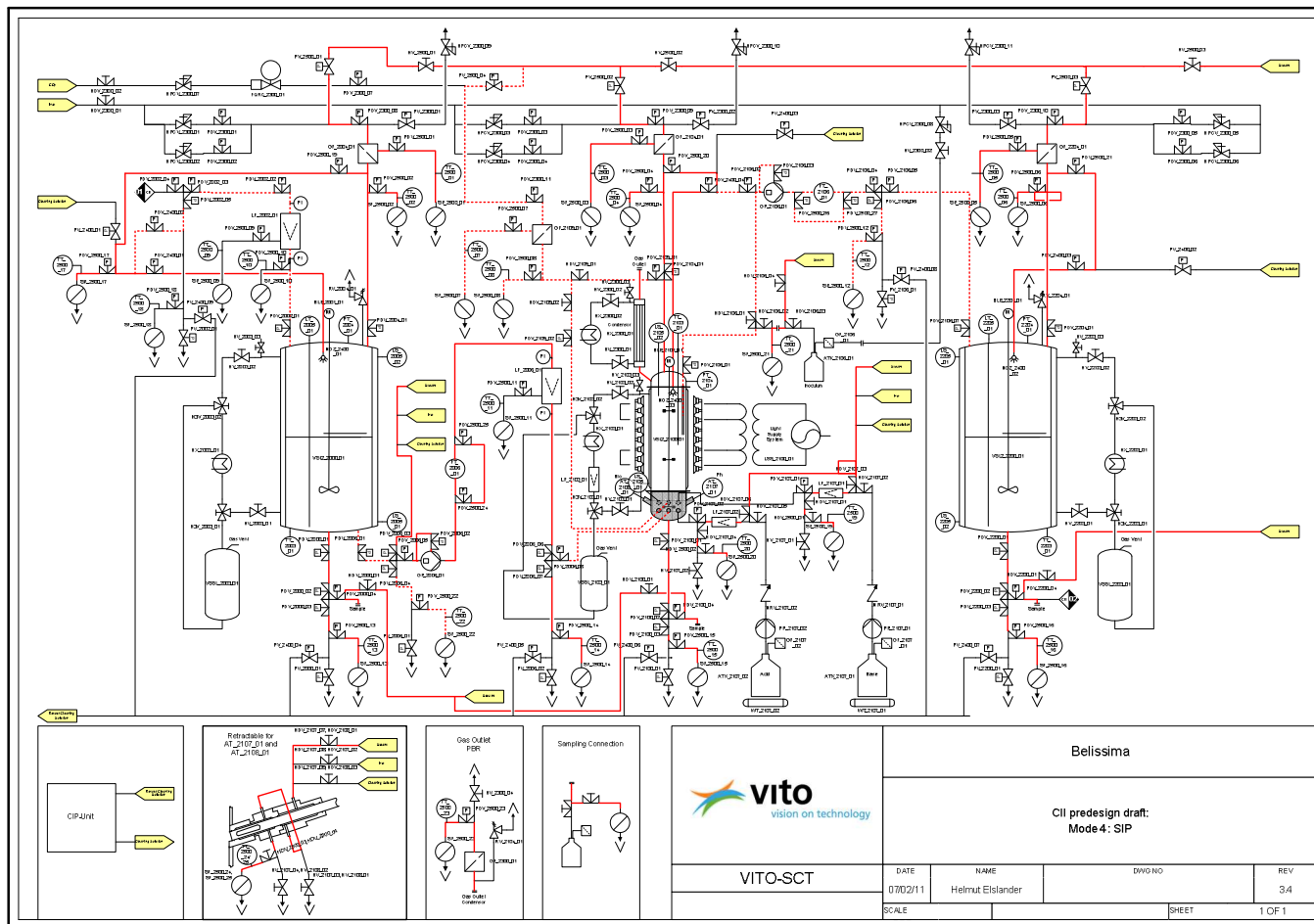


Figure 6. Mode 4: SIP



Document Identification:
Detailed design CII

Type
TN

number
80.242

Issue
1

Page : 57 / 90

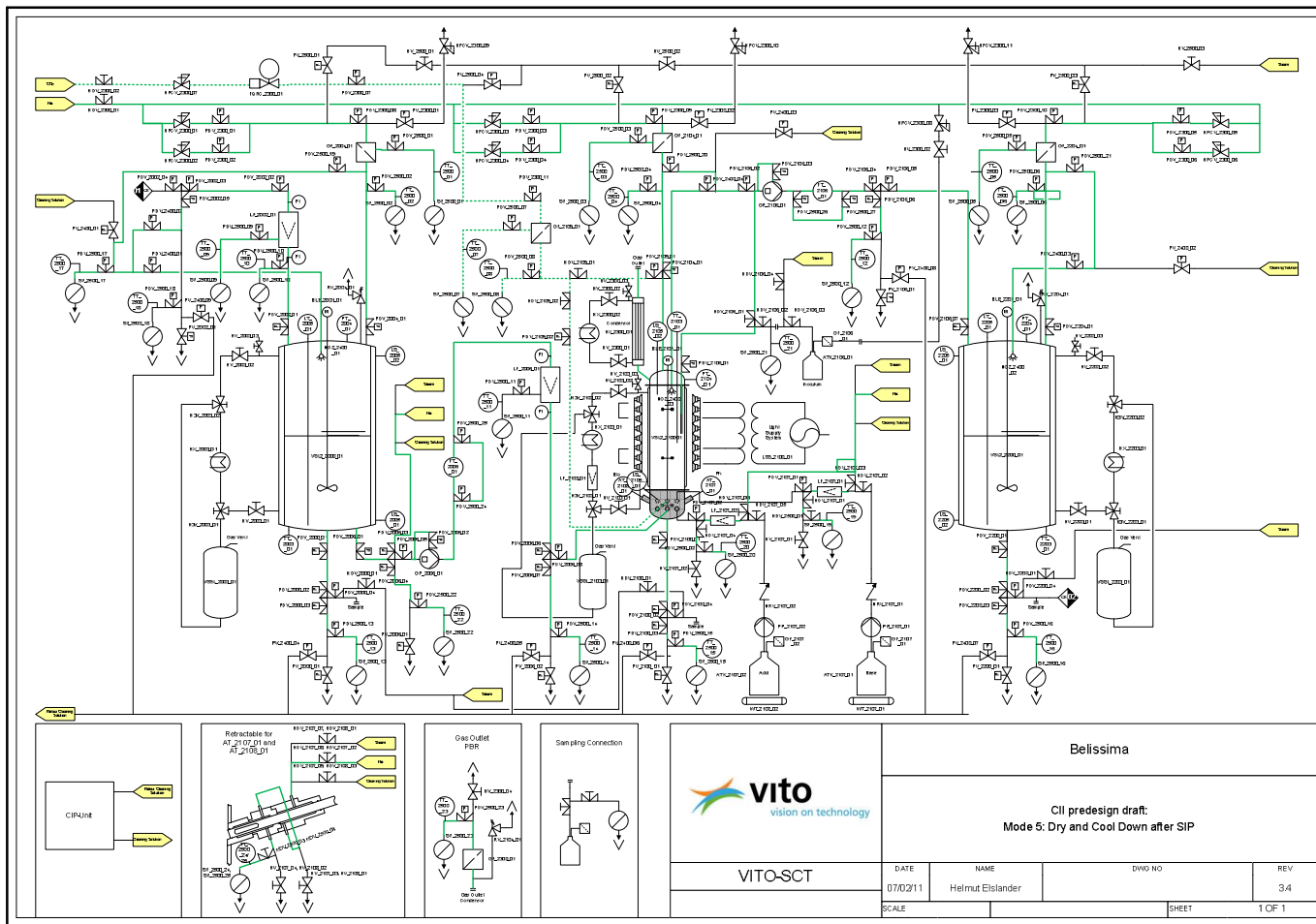


Figure 7. Mode 5: Dry and cool-down



Document Identification: Detailed design CII	Type	number	Issue	Page : 58 / 90
	TN	80.242	1	

8. Electrotechnical data

Tag number	Description	Voltage (V)	AO	AI	DO	DI	Interface
Influent tank							
PDV_2000_01	Pneumatically operated 2-way Sanitary Diaphragm Tank Bottom Valve, on tank bottom	24 Vdc			24Vdc PNP		
PDV_2000_02	Pneumatically operated 3 x 2-way Sanitary Diaphragm Valve (Triverter), below tank	24 Vdc			24Vdc PNP		
PDV_2000_03		24 Vdc			24Vdc PNP		
PDV_2000_04		24 Vdc			24Vdc PNP		
PV_2000_01	Pneumatically operated 2-way Ball Valve	24 Vdc			24Vdc PNP		
VSL2_2000_01	Influent tank with sight-glass and light.	240 Vac					
BLE_2001_01	Magnetic Coupled Stirrer at a variable frequency	400 Vac / 3Ph	4 – 20 mA	4 – 20 mA	Relay	Relay	
PDV_2002_01	Pneumatically operated 2-way Sanitary Diaphragm Valve, on top of the tank	24 Vdc			24Vdc PNP		
PDV_2002_02	Pneumatically operated 2-way Sanitary Diaphragm Valve, zero dead leg, before liquid filter LF_2002_01	24 Vdc			24Vdc PNP		
PDV_2002_03	Pneumatically operated 3 x 2-way Sanitary Diaphragm Valve (Triverter), before liquid filter LF_2002_01	24 Vdc			24Vdc PNP		
PDV_2002_04		24 Vdc			24Vdc PNP		
PDV_2002_05		24 Vdc			24Vdc PNP		
PV_2002_01	Pneumatically operated 2-way Ball Valve	24 Vdc			24Vdc PNP		
HX_2003_01	Heat Exchanger influent tank	400 Vac / 3Ph	4 – 20 mA	4 – 20 mA	Relay	Relay	RS232, RS485
TT_2003_01	Temperature Transmitter	24 Vdc	4 – 20 mA				
PDV_2004_01	Pneumatically operated 2-way Sanitary Diaphragm Valve, on	24 Vdc			24Vdc PNP		



Document Identification: Detailed design CII	Type	number	Issue	Page : 59 / 90
	TN	80.242	1	

Tag number	Description	Voltage (V)	AO	AI	DO	DI	Interface
	top of the tank, after the gas filter GF_2004_01						
PT_2004_01	Pressure Transmitter	24 Vdc	4 – 20 mA				
LS_2005_01	Level Switch Low	24 Vdc			24Vdc PNP		
LS_2005_02	Level Switch High	24 Vdc			24Vdc PNP		
LT_2005_01	Level Transmitter	24 Vdc	4 – 20 mA				
FT_2006_01	Flow Transmitter, Coriolis mass flow measuring system.	24 Vdc	4 – 20 mA				
GP_2006_01	Magnetic Drive Gear Pump with steam bypass and speed control, CIP & SIP capability	400 Vac / 3Ph	4 – 20 mA	4 – 20 mA	Relay	Relay	
PDV_2006_01	Pneumatically operated 2-way Sanitary Diaphragm Tank Bottom Valve, on tank bottom	24 Vdc			24Vdc PNP		
PDV_2006_02	Pneumatically operated 2-way Sanitary Diaphragm Valve, bypass pump GP_2006_01	24 Vdc			24Vdc PNP		
PDV_2006_03	Pneumatically operated 3 x 2-way Sanitary Diaphragm Valve (Triverter), before pump GP_2006_01	24 Vdc			24Vdc PNP		
PDV_2006_04		24 Vdc			24Vdc PNP		
PDV_2006_05		24 Vdc			24Vdc PNP		
PDV_2006_06	Pneumatically operated 3 x 2-way Sanitary Diaphragm Valve (Triverter), after liquid filter LF_2006_01	24 Vdc			24Vdc PNP		
PDV_2006_07		24 Vdc			24Vdc PNP		
PDV_2006_08		24 Vdc			24Vdc PNP		
PV_2006_01	Pneumatically operated 2-way Ball Valve	24 Vdc			24Vdc PNP		
PV_2006_02	Pneumatically operated 2-way Ball Valve	24 Vdc			24Vdc PNP		
Photoreactor							
LSS_2100_01	Light Supply System with adjustable light intensity / loop and integrated cooling system, 2 separated loops (see notes)	12 Vdc					
PDV_2100_01	Pneumatically operated 2-way Sanitary Diaphragm Tank	24 Vdc			24Vdc PNP		



Document Identification:
Detailed design CII

Type
TN

number
80.242

Issue
1

Page : 60 / 90

Tag number	Description	Voltage (V)	AO	AI	DO	DI	Interface
	Bottom Valve, on reactor bottom (if possible)						
PDV_2100_02	Pneumatically operated 3 x 2-way Sanitary Diaphragm Valve (Triverter), below reactor	24 Vdc			24Vdc PNP		
PDV_2100_03		24 Vdc			24Vdc PNP		
PDV_2100_04		24 Vdc			24Vdc PNP		
PV_2100_01	Pneumatically operated 2-way Ball Valve	24 Vdc			24Vdc PNP		
BLE_2101_01	Magnetic Coupled Stirrer at a variable frequency, speed in normal operation is 300 – 400 rpm	≈ 40 Vdc (see specs)	4 – 20 mA	4 – 20 mA	Relay	Relay	
HX_2103_01	Heat Exchanger bioreactor	400 Vac / 3Ph	4 – 20 mA	4 – 20 mA	Relay	Relay	RS232, RS485
TT_2103_01	Temperature Transmitter	24 Vdc	4 – 20 mA				
PDV_2104_01	Pneumatically operated 2-way Sanitary Diaphragm Valve, on top of the reactor, after the gas filter GF_2104_01						
PT_2104_01	Pressure Transmitter	24 Vdc	4 – 20 mA				
LS_2105_01	Level Switch Low	24 Vdc			24Vdc PNP		
LS_2105_02	Level Switch High, with option “Foam Detection”	24 Vdc			24Vdc PNP		
FT_2106_01	Flow Transmitter, Coriolis mass flow measuring system.	24 Vdc	4 – 20 mA				
GP_2106_01	Magnetic Drive Gear Pump with steam bypass and speed control, CIP & SIP capability	400 Vac / 3Ph	4 – 20 mA	4 – 20 mA	Relay	Relay	
PDV_2106_01	Pneumatically operated 2-way Sanitary Diaphragm Valve, on top of the reactor	24 Vdc			24Vdc PNP		
PDV_2106_02	Pneumatically operated 2-way Sanitary Diaphragm Valve, zero dead leg	24 Vdc			24Vdc PNP		
PDV_2106_03	Pneumatically operated 2-way Sanitary Diaphragm Valve, bypass pump GP_2106_01	24 Vdc			24Vdc PNP		
PDV_2106_04	Pneumatically operated 3 x 2-way Sanitary Diaphragm Valve	24 Vdc			24Vdc PNP		



Document Identification: Detailed design CII	Type	number	Issue	Page : 61 / 90
	TN	80.242	1	

Tag number	Description	Voltage (V)	AO	AI	DO	DI	Interface
PDV_2106_05	(Triverter), after pump GP_2106_01	24 Vdc			24Vdc PNP		
PDV_2106_06		24 Vdc			24Vdc PNP		
PDV_2106_07	Pneumatically operated 2-way Sanitary Diaphragm Valve, on top of the reactor	24 Vdc			24Vdc PNP		
PV_2106_01	Pneumatically operated 2-way Ball Valve	24 Vdc			24Vdc PNP		
AT_2107_01	pH measurement, pH sensor with automatically retractable sterilizable housing, and position indication	24 Vdc	4 – 20 mA		24Vdc PNP		
PDV_2107_01	Pneumatically operated 2-way Sanitary Diaphragm Valve, zero dead leg, for steam sterilizable connection to base	24 Vdc			24Vdc PNP		
PDV_2107_02	Pneumatically operated 2-way Sanitary Diaphragm Valve, zero dead leg, for steam sterilizable connection to acid	24 Vdc			24Vdc PNP		
PP_2107_01	Peristaltic Pump for dosing base	240 Vac		4 – 20 mA		Relay, 24Vdc PNP	
PP_2107_02	Peristaltic Pump for dosing acid	240 Vac		4 – 20 mA		Relay, 24Vdc PNP	
WT_2107_01	Balance for base	240 Vac					
WT_2107_02	Balance for acid	240 Vac					Ethernet
AT_2108_01	Turbidity measurement, turbidity sensor with automatically retractable sterilizable housing and position indication	24 Vdc	4 – 20 mA		24Vdc PNP		
PDV_2109_01	Pneumatically operated 2-way Sanitary Diaphragm Valve, after the gas filter GF_2109_01	24 Vdc			24Vdc PNP		
PDV_2109_02	Pneumatically operated 2-way Sanitary Diaphragm Valve, after the gas filter GF_2109_01	24 Vdc			24Vdc PNP		
Effluent tank							



Document Identification:
Detailed design CII

Type
TN

number
80.242

Issue
1

Page : 62 / 90

Tag number	Description	Voltage (V)	AO	AI	DO	DI	Interface
PDV_2200_01	Pneumatically operated 2-way Sanitary Diaphragm Tank Bottom Valve, on tank bottom	24 Vdc			24Vdc PNP		
PDV_2200_02	Pneumatically operated 3 x 2-way Sanitary Diaphragm Valve (Triverter), below tank	24 Vdc			24Vdc PNP		
PDV_2200_03		24 Vdc			24Vdc PNP		
PDV_2200_04		24 Vdc			24Vdc PNP		
PV_2200_01	Pneumatically operated 2-way Ball Valve	24 Vdc			24Vdc PNP		
VSL2_2200_01	Effluent tank with sight-glass and light.	240 Vac					
BLE_2201_01	Magnetic Coupled Stirrer at a variable frequency	400 Vac / 3Ph	4 – 20 mA	4 – 20 mA	Relay	Relay	
HX_2203_01	Heat Exchanger effluent tank	400 Vac / 3Ph	4 – 20 mA	4 – 20 mA	Relay	Relay	RS232, RS485
TT_2203_01	Temperature Transmitter	24 Vdc	4 – 20 mA				
PDV_2204_01	Pneumatically operated 2-way Sanitary Diaphragm Valve, on top of the tank, after the gas filter GF_2204_01	24 Vdc			24Vdc PNP		
PT_2204_01	Pressure Transmitter	24 Vdc	4 – 20 mA				
LS_2205_01	Level Switch Low	24 Vdc			24Vdc PNP		
LS_2205_02	Level Switch High	24 Vdc			24Vdc PNP		
LT_2205_01	Level Transmitter	24 Vdc	4 – 20 mA				
Gas loop							
FQRC_2300_01	Gas Flow Controller	24 Vdc	4 – 20 mA	4 – 20 mA			
HX_2300_03	Heated hose with integrated temperature sensor and controller. Exchangeable inner tube				Relay		
PDV_2300_01	Pneumatically operated 2-way Sanitary Diaphragm Valve, to gas filter GF_2004_01	24 Vdc			24Vdc PNP		



Document Identification:
Detailed design CII

Type
TN

number
80.242

Issue
1

Page : 63 / 90

Tag number	Description	Voltage (V)	AO	AI	DO	DI	Interface
PDV_2300_02	Pneumatically operated 2-way Sanitary Diaphragm Valve, to gas filter GF_2004_01	24 Vdc			24Vdc PNP		
PDV_2300_03	Pneumatically operated 2-way Sanitary Diaphragm Valve, to gas filter GF_2104_01	24 Vdc			24Vdc PNP		
PDV_2300_04	Pneumatically operated 2-way Sanitary Diaphragm Valve, to gas filter GF_2104_01	24 Vdc			24Vdc PNP		
PDV_2300_05	Pneumatically operated 2-way Sanitary Diaphragm Valve, to gas filter GF_2204_01	24 Vdc			24Vdc PNP		
PDV_2300_06	Pneumatically operated 2-way Sanitary Diaphragm Valve, to gas filter GF_2204_01	24 Vdc			24Vdc PNP		
PDV_2300_07	Pneumatically operated 2-way Sanitary Diaphragm Valve, to gas filter GF_2109_01	24 Vdc			24Vdc PNP		
PDV_2300_08	Pneumatically operated 2-way Sanitary Diaphragm Valve, to gas filter GF_2004_01	24 Vdc			24Vdc PNP		
PDV_2300_09	Pneumatically operated 2-way Sanitary Diaphragm Valve, to gas filter GF_2104_01	24 Vdc			24Vdc PNP		
PDV_2300_10	Pneumatically operated 2-way Sanitary Diaphragm Valve, to gas filter GF_2204_01	24 Vdc			24Vdc PNP		
PDV_2300_11	Pneumatically operated 2-way Sanitary Diaphragm Valve, to gas filter GF_2109_01	24 Vdc			24Vdc PNP		
PV_2300_01	Pneumatically operated 2-way Ball Valve	24 Vdc			24Vdc PNP		
PV_2300_02	Pneumatically operated 2-way Ball Valve	24 Vdc			24Vdc PNP		
PV_2300_03	Pneumatically operated 2-way Ball Valve	24 Vdc			24Vdc PNP		
CIP							
PDV_2400_01	Pneumatically operated 2-way Sanitary Diaphragm Valve, to NOZ_2400_01	24 Vdc			24Vdc PNP		



Document Identification:
Detailed design CII

Type
TN

number
80.242

Issue
1

Page : 64 / 90

Tag number	Description	Voltage (V)	AO	AI	DO	DI	Interface
PDV_2400_02	Pneumatically operated 2-way Sanitary Diaphragm Valve, to LF_2002_01	24 Vdc			24Vdc PNP		
PDV_2400_03	Pneumatically operated 2-way Sanitary Diaphragm Valve, to NOZ_2400_02	24 Vdc			24Vdc PNP		
PDV_2400_04	Pneumatically operated 2-way Sanitary Diaphragm Valve, to NOZ_2400_03	24 Vdc			24Vdc PNP		
PV_2400_01	Pneumatically operated 2-way Ball Valve, to influent tank	24 Vdc			24Vdc PNP		
PV_2400_02	Pneumatically operated 2-way Ball Valve, to effluent tank	24 Vdc			24Vdc PNP		
PV_2400_03	Pneumatically operated 2-way Ball Valve, to bioreactor	24 Vdc			24Vdc PNP		
PV_2400_04	Pneumatically operated 2-way Ball Valve, retour cleaning solution influent tank	24 Vdc			24Vdc PNP		
PV_2400_05	Pneumatically operated 2-way Ball Valve, retour cleaning solution LF_2102_01	24 Vdc			24Vdc PNP		
PV_2400_06	Pneumatically operated 2-way Ball Valve, retour cleaning solution bioreactor	24 Vdc			24Vdc PNP		
PV_2400_07	Pneumatically operated 2-way Ball Valve, retour cleaning solution effluent tank	24 Vdc			24Vdc PNP		
PV_2400_08	Pneumatically operated 2-way Ball Valve, retour cleaning solution after GP_2106_01	24 Vdc			24Vdc PNP		
SIP							
PDV_2500_01	Pneumatically operated 2-way Sanitary Diaphragm Valve, before gas filter GF_2004_01	24 Vdc			24Vdc PNP		
PDV_2500_02	Pneumatically operated 2-way Sanitary Diaphragm Valve, after gas filter GF_2004_01	24 Vdc			24Vdc PNP		
PDV_2500_03	Pneumatically operated 2-way Sanitary Diaphragm Valve, before gas filter GF_2104_01	24 Vdc			24Vdc PNP		



Document Identification:
Detailed design CII

Type
TN

number
80.242

Issue
1

Page : 65 / 90

Tag number	Description	Voltage (V)	AO	AI	DO	DI	Interface
PDV_2500_04	Pneumatically operated 2-way Sanitary Diaphragm Valve, after gas filter GF_2104_01	24 Vdc			24Vdc PNP		
PDV_2500_05	Pneumatically operated 2-way Sanitary Diaphragm Valve, before gas filter GF_2204_01	24 Vdc			24Vdc PNP		
PDV_2500_06	Pneumatically operated 2-way Sanitary Diaphragm Valve, after gas filter GF_2204_01	24 Vdc			24Vdc PNP		
PDV_2500_07	Pneumatically operated 2-way Sanitary Diaphragm Valve, before gas filter GF_2109_01	24 Vdc			24Vdc PNP		
PDV_2500_08	Pneumatically operated 2-way Sanitary Diaphragm Valve, after gas filter GF_2109_01	24 Vdc			24Vdc PNP		
PDV_2500_09	Pneumatically operated 2-way Sanitary Diaphragm Valve, before liquid filter LF_2002_01	24 Vdc			24Vdc PNP		
PDV_2500_10	Pneumatically operated 2-way Sanitary Diaphragm Valve, zero dead leg, after liquid filter LF_2002_01	24 Vdc			24Vdc PNP		
PDV_2500_11	Pneumatically operated 2-way Sanitary Diaphragm Valve, before liquid filter LF_2102_01	24 Vdc			24Vdc PNP		
PDV_2500_12	Pneumatically operated 2-way Sanitary Diaphragm Valve, zero dead leg, after gear pump GP_2106_01 and before effluent tank	24 Vdc			24Vdc PNP		
PDV_2500_13	Pneumatically operated 2-way Sanitary Diaphragm Valve, zero dead leg, after influent tank	24 Vdc			24Vdc PNP		
PDV_2500_14	Pneumatically operated 2-way Sanitary Diaphragm Valve, zero dead leg, after liquid filter LF_2102_01	24 Vdc			24Vdc PNP		
PDV_2500_15	Pneumatically operated 2-way Sanitary Diaphragm Valve, zero dead leg, after bioreactor	24 Vdc			24Vdc PNP		
PDV_2500_16	Pneumatically operated 2-way Sanitary Diaphragm Valve, zero dead leg, after effluent tank	24 Vdc			24Vdc PNP		
PDV_2500_17	Pneumatically operated 2-way Sanitary Diaphragm Valve, zero dead leg, before influent tank	24 Vdc			24Vdc PNP		



Document Identification: Detailed design CII	Type	number	Issue	Page : 66 / 90
	TN	80.242	1	

Tag number	Description	Voltage (V)	AO	AI	DO	DI	Interface
PDV_2500_18	Pneumatically operated 2-way Sanitary Diaphragm Valve, zero dead leg, after interface CII-01	24 Vdc			24Vdc PNP		
PDV_2500_19	Pneumatically operated 2-way Sanitary Diaphragm Valve, to influent tank	24 Vdc			24Vdc PNP		
PDV_2500_20	Pneumatically operated 2-way Sanitary Diaphragm Valve, to bioreactor	24 Vdc			24Vdc PNP		
PDV_2500_21	Pneumatically operated 2-way Sanitary Diaphragm Valve, to effluent tank	24 Vdc			24Vdc PNP		
PDV_2500_22	Pneumatically operated 2-way Sanitary Diaphragm Valve, zero dead leg, before pump GP_2006_01	24 Vdc			24Vdc PNP		
PDV_2500_23	Pneumatically operated 2-way Sanitary Diaphragm Valve, after gas filter GF_2300_01	24 Vdc			24Vdc PNP		
PDV_2500_24	Pneumatically operated 2-way Sanitary Diaphragm Valve, zero dead leg, before flow transmitter FT_2006_01	24 Vdc			24Vdc PNP		
PDV_2500_25	Pneumatically operated 2-way Sanitary Diaphragm Valve, zero dead leg, after flow transmitter FT_2006_01	24 Vdc			24Vdc PNP		
PDV_2500_26	Pneumatically operated 2-way Sanitary Diaphragm Valve, zero dead leg, before flow transmitter FT_2106_01	24 Vdc			24Vdc PNP		
PDV_2500_27	Pneumatically operated 2-way Sanitary Diaphragm Valve, zero dead leg, after flow transmitter FT_2106_01	24 Vdc			24Vdc PNP		
PV_2500_01	Pneumatically operated 2-way Ball Valve, to gas filter GF_2004_01	24 Vdc			24Vdc PNP		
PV_2500_02	Pneumatically operated 2-way Ball Valve, to gas filter GF_2104_01	24 Vdc			24Vdc PNP		
PV_2500_03	Pneumatically operated 2-way Ball Valve, to gas filter GF_2204_01	24 Vdc			24Vdc PNP		
PV_2500_04	Pneumatically operated 2-way Ball Valve, to gas filter GF_2109_01	24 Vdc			24Vdc PNP		



Document Identification:
Detailed design CII

Type
TN

number
80.242

Issue
1

Page : 67 / 90

Tag number	Description	Voltage (V)	AO	AI	DO	DI	Interface
TT_2500_01	Temperature Transmitter	24 Vdc	4 – 20 mA				
TT_2500_02	Temperature Transmitter	24 Vdc	4 – 20 mA				
TT_2500_03	Temperature Transmitter	24 Vdc	4 – 20 mA				
TT_2500_04	Temperature Transmitter	24 Vdc	4 – 20 mA				
TT_2500_05	Temperature Transmitter	24 Vdc	4 – 20 mA				
TT_2500_06	Temperature Transmitter	24 Vdc	4 – 20 mA				
TT_2500_07	Temperature Transmitter	24 Vdc	4 – 20 mA				
TT_2500_08	Temperature Transmitter	24 Vdc	4 – 20 mA				
TT_2500_09	Temperature Transmitter	24 Vdc	4 – 20 mA				
TT_2500_10	Temperature Transmitter	24 Vdc	4 – 20 mA				
TT_2500_11	Temperature Transmitter	24 Vdc	4 – 20 mA				
TT_2500_12	Temperature Transmitter	24 Vdc	4 – 20 mA				
TT_2500_13	Temperature Transmitter	24 Vdc	4 – 20 mA				
TT_2500_14	Temperature Transmitter	24 Vdc	4 – 20 mA				
TT_2500_15	Temperature Transmitter	24 Vdc	4 – 20 mA				
TT_2500_16	Temperature Transmitter	24 Vdc	4 – 20 mA				
TT_2500_17	Temperature Transmitter	24 Vdc	4 – 20 mA				
TT_2500_18	Temperature Transmitter	24 Vdc	4 – 20 mA				
TT_2500_19	Temperature Transmitter	24 Vdc	4 – 20 mA				
TT_2500_20	Temperature Transmitter	24 Vdc	4 – 20 mA				
TT_2500_21	Temperature Transmitter	24 Vdc	4 – 20 mA				
TT_2500_22	Temperature Transmitter	24 Vdc	4 – 20 mA				
TT_2500_23	Temperature Transmitter	24 Vdc	4 – 20 mA				
TT_2500_24	Temperature Transmitter	24 Vdc	4 – 20 mA				



Document Identification:	Type	number	Issue	Page : 68 / 90
Detailed design CII	TN	80.242	1	

Tag number	Description	Voltage (V)	AO	AI	DO	DI	Interface
TT_2500_25	Temperature Transmitter	24 Vdc	4 – 20 mA				



Document Identification: Detailed design CII	Type	number	Issue	Page : 69 / 90
	TN	80.242	1	

9. Process description

This process description provides a detailed overview of the different steps in the operation of CII. It should be read in relation to the provided schemes on the different operation modes as given in chapter 7. Only limited details on tags, control values and equipment characteristics are included as these are all discussed elsewhere in this technical note.

Chapters 9.4 and 9.5 provide a detailed overview of the different steps in the cleaning and steaming of the CII plant. They should be read in relation to the corresponding schemes, as given in chapter 7. Only essential tags and valve positions are mentioned. The rest can be easily concluded from the schemes.

9.1 Influent tank (VSL2_2000_01)

9.1.1 Start-up

Prerequisite: the influent tank and its in-and outlet piping must be empty, cleaned and sterilized.

1. The cooling of the influent tank must be started by activation of HX_2003_01. All hand valves must be positioned correctly. Sensor TT_2003_01 will measure the temperature in the reactor.
2. Helium, from the 1.5 bar circuit is routed towards the head-space of the influent tank, through the sanitary gas filter GF_2004_01, in order to obtain an overpressure inside the influent tank. This is controlled by means of the manual pressure regulator HPCV_2300_09. The pressure transmitter PT_2004_01 on the influent tank is foreseen as control. As soon as the required overpressure is reached the inflow of helium will stop. The pressure relief valve RV_2004_01 will open in case of emergency whenever values above its setpoint are reached.
3. Then the influent tank can be fed with effluent from CI or synthetic feed through the sanitary filter LF_2002_01. A pressure indication is foreseen on this filter. The influent volume can be read on-line (LT_2005_01) and the user should stop filling when the maximum volume is reached in the tank. The pressure regulator HPCV_2300_09 is used to evacuate excess helium during filling and maintain the required overpressure
4. Then the stirrer BLE_2001_01 is started in order to mix the influent, mainly to obtain a homogeneous temperature inside the tank.
5. Feeding towards the bioreactor can now be started and will be further discussed in chapter 9.2.1.

9.1.2 Nominal operation

- Temperature: the influent tank is maintained at its setpoint temperature using cooling system HX_2003_01. The cooling liquid is circulated through the double jacket of the influent tank. The temperature measured in the influent tank (TT_2003_01) is used to control (cooling set point or on/off action on cooler).



Document Identification: Detailed design CII	Type TN	number 80.242	Issue 1	Page : 70 / 90
---	------------	-------------------------	------------	----------------

- Mixing: the influent is mixed to obtain a homogeneous temperature inside the tank.
- Level: the influent volume is measured on-line by means of the level transmitter LT_2005_01. Additional safety is foreseen on low and high levels with the level switches LS_2005_01 and _02. They will generate alarms at respectively too low and too high levels in the influent tank.
- Pressure: The pressure inside the influent tank is measured on-line by PT_2004_01. Helium, from the 1.5 bar circuit is routed towards the head-space of the influent tank, through the sanitary gas filter, in order to obtain the required overpressure inside the influent tank. This is controlled by means of the manual pressure regulator HPCV_2300_09. The pressure relief valve RV_2004_01 on the influent tank will open whenever values above its setpoint are reached, as an emergency protection against overpressure.
- Filling influent tank: the influent tank can be fed regularly (for instance once a week) with fresh influent.
- Sampling: samples can be taken from the influent tank at the bottom. In order to connect the sampling bottle to the tank a steam sterilised connection is needed.

9.1.3 Shut down

In preparation to cleaning and sterilisation, the influent tank needs to be stopped. For this, the following steps are needed.

1. The feeding (pump GP_2006_01) towards the bioreactor is stopped.
2. The filling steps of the influent tank are stopped.
3. The stirrer BLE_2001_01 is stopped.
4. The heat exchanger HX_2003_01 is stopped.

9.2 Bioreactor (VSL2_2100_01)

9.2.1 Start-up

Prerequisite: the photobioreactor and its in-and outlet piping must be empty, cleaned and sterilized.

1. The cooling system HX_2103_01 on the bioreactor is started. The temperature measurements in the photobioreactor (one separate TT_2103_01 and one integrated in the pH probe AT_2107_01) are used to control (cooling set point).
2. The cooling system HX_2100_01 on the condenser on the bioreactor is started.
3. The reheater HX_2300_03 after the condenser can be started whenever gas samples need to be taken.
4. The lower half of the illumination system LSS_2100_01 is started, including the cooling fans. If necessary, calibration of the light intensity will be required, using a portable light flux measurement.
5. Helium, from the 1.5 bar circuit is routed towards the head-space of the bioreactor, through the sanitary gas filter GF_2104_01, in order to obtain an overpressure inside the bioreactor. This is controlled by means of the manual pressure regulator HPCV_2300_10. The pressure transmitter PT_2104_01 on the bioreactor is foreseen as control. As soon as the required



Document Identification: Detailed design CII	Type	number	Issue	Page : 71 / 90
	TN	80.242	1	

- overpressure is reached the inflow of helium will stop. The pressure relief valve RV_2109_01 will open whenever values above its setpoint are reached, as an emergency.
- The bottom-tank valve PDV_2006_01 of the influent tank is opened and pump GP_2006_01 can be started. The influent is routed over the sanitary liquid filter LF_2102_01 towards the bottom of the bioreactor.
 - Due to difficulties in placing a level transmitter in the bioreactor and as the illumination device blocks the sight on the glass reactor, the amount of influent already added to the bioreactor can be followed based on the flow measurement of flow transmitter FT_2006_01 or indirectly from the level in the influent tank.
 - Then the stirrer BLE_2101_01 is started in order to mix the medium and to obtain a homogeneous temperature inside the tank.
 - Now, the biomass can be added from the inoculum vessel ATK_2106_01 towards the bioreactor, backwards through the effluent evacuation piping. This is done using helium pressure.
 - The bioreactor can now systematically be further filled with influent until high level.
 - Then the higher half of the illumination system LSS_2100_01 can be started, including its additional cooling fans.
 - Effluent and biomass evacuation can now be started and will be further discussed in chapter 9.3.1.

9.2.2 Nominal operation

- Temperature:** the photobioreactor is maintained at a specified temperature using cooling system HX_2103_01. Cooling will be required as the illumination system will heat up the reactor. The cooling liquid is circulated through the double jacket of the reactor. The temperature measurements in the photobioreactor (one separate TT_2103_01 and one integrated in the pH probe AT_2107_01) are used to control.
- Mixing:** the bioreactor is mixed to obtain a homogeneous mixture of feed and biomass and to obtain a homogenous temperature inside the reactor (stirrer BLE_2101_01).
- Level:** no level measurement is foreseen in the reactor. For safety reasons, low and high level indication is foreseen with the level switches LS_2105_01 and _02. They will generate alarms at respectively too low and too high level in the bioreactor. An additional foam detection is advisable for the high level switch.
- Pressure:** The pressure inside the bioreactor is measured on-line by PT_2104_01. Helium, from the 1.5 bar circuit is routed towards the head-space of the bioreactor, through the sanitary gas filter GF_2104_01, in order to obtain the overpressure inside the bioreactor of 100 mbar. This is controlled by means of the manual pressure regulator HPCV_2300_10. The pressure transmitter PT_2104_01 on the bioreactor is foreseen as control. As soon as the required overpressure is reached, the inflow of helium will stop. The pressure relief valve RV_2109_01, after the condenser, will open whenever values above its setpoint are reached, as an emergency.
- pH control:** the pH is measured by the retractable probe AT_2107_01 and can be adjusted by adding acid or base. Acid is dosed from the storage bottle ATK_2107_02 by pump PP_2107_02 over the sanitary liquid filter LF_2107_02. Consumption is measured by



Document Identification:	Type	number	Issue	Page : 72 / 90
Detailed design CII	TN	80.242	1	

means of balance WT_2107_02. Base is dosed from the storage bottle ATK_2107_01 by pump PP_2107_01 over the sanitary liquid filter LF_2107_01. Consumption is measured by means of balance WT_2107_01.

- Biomass: the biomass concentration is measured by means of a retractable turbidity sensor (AT_2108_01), as described in the hardware chapter 5.2.
- Feeding the bioreactor: the influent will be fed from the influent tank towards the bioreactor by means of pump GP_2006_01 over the sanitary liquid filter LF_2006_01. A pressure indication is foreseen on this filter. The flow rate can be measured and controlled using flow transmitter FT_2006_01.
- Illumination: the bioreactor is illuminated continuously by the device LSS_2100_01.
- Sampling: samples can be taken from the bioreactor at the bottom. In order to connect the sampling bottle to the tank a steam sterilised connection is needed.

9.2.3 Shut-down

In preparation to cleaning and sterilisation, the bioreactor needs to be stopped. For this, the following steps are needed.

1. The feeding (pump GP_2006_01) towards the bioreactor is stopped.
2. The effluent evacuation (pump GP_2106_01) is stopped.
3. The stirrer BLE_2101_01 is stopped.
4. The heat exchanger HX_2103_01 is stopped.
5. The acid and base pumps PP_2107_01 and PP_2107_2 are both stopped.

9.3 Effluent tank (VSL2_2200_01)

9.3.1 Start-up

Prerequisite: the influent tank and its in-and outlet piping must be empty, cleaned and sterilized.

1. The cooling of the effluent tank must be started by activation of HX_2203_01. Sensor TT_2203_01 will measure the temperature in the reactor.
2. Helium, from the 1.5 bar circuit is routed towards the head-space of the effluent tank, through the sanitary gas filter GF_2204_01, in order to obtain an overpressure inside the influent tank of 100 mbar. This is controlled by means of the manual pressure regulator HPCV_2300_11. The pressure transmitter PT_2204_01 on the effluent tank is foreseen as control. As soon as the required overpressure is reached the inflow of helium will stop. The pressure relief valve RV_2204_01 will open in case of emergency whenever values above its setpoint are reached.
3. Then the effluent tank can be fed with medium from the bioreactor by activation of pump GP_2106_01. The flow rate can be measured and controlled using flow transmitter FT_2106_01.
4. Then the stirrer BLE_2201_01 is started in order to mix the effluent, mainly to obtain a homogeneous temperature inside the tank.



Document Identification: Detailed design CII	Type TN	number 80.242	Issue 1	Page : 73 / 90
---	------------	-------------------------	------------	----------------

9.3.2 Nominal operation

- Temperature: the effluent tank is maintained at its set temperature using cooling system HX_2203_01. The cooling liquid is circulated through the double jacket of the influent tank. The temperature measured in the influent tank (TT_2203_01) is used to control (cooling set point or on/off action on cooler).
- Mixing: the effluent is mixed to obtain a homogeneous temperature inside the tank.
- Level: the effluent volume is measured on-line by means of the level transmitter LT_2205_01. Additional safety is foreseen on low and high levels with the level switches LS_2205_01 and _02. They will generate alarms at respectively too low and too high levels in the effluent tank.
- Pressure: The pressure inside the effluent tank is measured on-line by PT_2204_01. Helium, from the 1.5 bar circuit is routed towards the head-space of the influent tank, through the sanitary gas filter, in order to obtain the overpressure inside the influent tank of 100 mbar. This is controlled by means of the manual pressure regulator HPCV_2300_11. The pressure relief valve RV_2204_01 on the effluent tank will open whenever values above its setpoint are reached, as an emergency protection against overpressure.
- Sampling: samples can be taken from the effluent tank at the bottom. In order to connect the sampling bottle to the tank a steam sterilised connection is needed.

9.3.3 Shut down

In preparation to cleaning and sterilisation, the effluent tank needs to be stopped. For this, the following steps are needed.

1. The effluent evacuation (pump GP_2106_01) is stopped.
2. The stirrer BLE_2201_01 is stopped.
3. The heat exchanger HX_2203_01 is stopped.

9.4 Cleaning process

9.4.1 Cleaning the influent tank

Prerequisite: the influent tank must be shut down.

1. The connection pipe between CI (or the influent preparation vessel) and the influent tank of CI can be drained by opening valve PV_2002_01.
2. The influent tank can be drained through the bottom tank valve PV_2000_01.
3. The piping in between the influent tank and the bioreactor can be drained by opening valve PV_2102_01. In case of cleaning the influent tank separately from the bioreactor, valve PDV_2102_03 remains closed.
4. The sanitary liquid filters are removed from their housing before cleaning.
5. Helium at 1,5 bar should be used to press all liquid out of the inlet piping, through the liquid filter and the influent vessel, towards the drain valves. From the helium sanitary liquid



Document Identification: Detailed design CII	Type	number	Issue	Page : 74 / 90
	TN	80.242	1	

filter, the gas can be routed directly towards the influent tank, or through the inlet piping, by opening valve PDV_2500_19.

6. Cleaning solution from the mobile CIP unit can then be sent from CI piping (or the influent preparation vessel) towards the recycle valve PV_2400_09.
7. Then, the CIP liquids can be routed through the inlet piping (PDV_2400_02), over the sanitary liquid filter housing LF_2002_01, towards the influent tank. Valve_2004_01 remains closed. Through the bottom tank valves, the CIP agent can be recycled towards the CIP unit by opening valve PV_2400_04.
8. After cleaning the inlet piping, valve PDV_2400_01 can be switched open instead of PDV_2400_02, sending the CIP solution through the spray-ball NOZ_2400_01, for proper cleaning of the influent tank. Again the CIP agent can be recycled towards the CIP unit by opening valve PV_2400_04.
9. The cleaning solution can as well be routed through the piping in between the influent tank and the bioreactor, by closing the bottom tank valves and opening PDV_2006_01. The bypass of the influent pump GP_2006_01 is used. The bypass over the flow transmitter FT_2006_01 is opened. This way, the CIP solution is sent over the sanitary liquid filter LF_2102_01 and recycled by opening PV_2400_05. In case of cleaning the influent tank separately from the bioreactor, valve PDV_2102_03 remains closed. The influent pump and sanitary liquid filter can as well be cleaned separately from the influent tank by keeping PDV_2006_01 closed and using the direct injection point PDV_2006_03.
10. Then, thorough rinsing with water is necessary to remove the polluted cleaning solution from the piping and influent tank towards the drains. Steps 6 to 9 can be repeated, using water. This is to be continued until the liquid leaving the installation contains no particles and has the same pH and conductivity as the used cleaning water.
11. After cleaning, the piping and the tank can be dried with helium at 1,5 bar, routed through valve PDV_2500_19, in the same direction as the previous cleaning solution and water. Steps 5 to 8 can be repeated using helium. Instead of recycling, the gas/liquid mixture is sent to the drains.

9.4.2 Cleaning the photobioreactor

Prerequisite: the bioreactor must be shut down.

1. The bioreactor and part of the effluent piping can be drained through the bottom tank valve PV_2100_01.
2. If cleaned separately from the influent tank, part of the piping between the influent tank and the bioreactor can be drained (and cleaned afterwards) by routing the liquid backwards through opened valves PDV_2102_02 and _03 and PV2101_01. Valve PDV_2102_02 should be closed.
3. The remaining part of the effluent piping can be drained by opening valve PV_2106_01.
4. Helium at 1,5 bar should be used to press all liquid out of the bioreactor and the related piping, towards the drain valves. From the helium sanitary liquid filter, the gas can be routed directly towards the bioreactor, or through the effluent piping, by opening valve PDV_2500_20.



Document Identification: Detailed design CII	Type	number	Issue	Page : 75 / 90
	TN	80.242	1	

5. Cleaning solution from the mobile CIP unit can be routed backwards through the effluent piping (PDV_2106_02) towards the bioreactor. Valve_2104_01 remains closed. Through the bottom tank valves, the CIP agent can be recycled towards the CIP unit by opening valve PV_2400_06. And for cleaning the last part of the influent piping, it can be recycled by opening valve PDV_2400_05.
6. After cleaning the first part of the effluent piping, valve PDV_2400_04 can be switched open instead of PDV_2106_02, sending the CIP solution through the spray-ball NOZ_2400_03, for proper cleaning of the bioreactor. The CIP agent is drained to avoid clogging of the spray ball.
7. The cleaning solution can then be routed through the second part of the effluent piping by closing valve PDV_2106_01 and opening PDV_2106_04 and _06. The bypass over the effluent pump GP_2106_01 is used. The bypass over the flow transmitter FT_2106_01 is opened. This way, the CIP solution is recycled by opening PV_2400_08.
8. Then, thorough rinsing with water is necessary to remove the polluted cleaning solution from the piping and bioreactor towards the drains. Steps 4 to 7 can be repeated, using water. This is to be continued until the liquid leaving the installation contains no particles and has the same pH and conductivity as the used cleaning water.
9. After cleaning, the piping and the reactor can be dried with helium at 1,5 bar, routed through valve PDV_2500_20, in the same direction as the previous cleaning solution and water. Steps 4 to 7 can be repeated using helium. Instead of recycling, the gas/liquid mixture is sent to the drains.

9.4.3 Cleaning the effluent tank

Prerequisite: the effluent tank must be shut down.

1. The effluent tank can be drained through the bottom tank valve PV_2200_01.
2. The last part of the piping in between the bioreactor and the effluent tank can be drained by opening valve PV_2106_01. In case of cleaning the effluent tank separately from the bioreactor, valve PDV_2106_04 remains closed.
3. Helium at 1,5 bar should be used to press all liquid out of the effluent vessel and part of the effluent piping, towards the drain valves. From the helium sanitary liquid filter, the gas can be routed directly towards the effluent tank.
4. Cleaning solution from the mobile CIP unit can then be routed through the spray-ball NOZ_2400_01, for proper cleaning of the effluent tank. The CIP agent can be recycled towards the CIP unit by opening valve PV_2400_07.
5. The cleaning solution can as well be routed backwards through the last part of the piping in between bioreactor and effluent tank, by closing the bottom tank valve, filling up the effluent tank and opening valve PDV_2106_07. This way, the CIP solution is recycled by opening PV_2400_08. In case of cleaning the effluent tank separately from the bioreactor, valve PDV_2106_04 remains closed.
6. Then, thorough rinsing with water is necessary to remove the polluted cleaning solution from the piping and effluent tank towards the drains. Steps 4 and 5 can be repeated, using water. This is to be continued until the liquid leaving the installation contains no particles and has the same pH and conductivity as the used cleaning water.



Document Identification: Detailed design CII	Type	number	Issue	Page : 76 / 90
	TN	80.242	1	

7. After cleaning, the piping and the tank can be dried with helium at 1,5 bar, routed through valve PDV_2500_21, in the same direction as the previous cleaning solution and water. Steps 4 and 5 can be repeated using helium. Instead of recycling, the gas/liquid mixture is sent to the drains.

9.4.4 Cleaning acid/base lines

This procedure should be followed whenever the sterile filter before the bottle of acid or base needs to be replaced. During replacement, connection valves PDV_2107_01 and/or PDV_2107_02 remain closed. The below procedure is written for base, but is identical for acid.

1. The connection pipe, including the sanitary liquid filter LF_2107_01, in between the base bottle and the bioreactor can be drained by opening valve HV_2107_01.
2. Helium at 1,5 bar can be used to press all liquid out of the piping and through the filter towards the drain.
3. The filter can now be removed.
4. Cleaning solution can then be routed through the connection piping by opening valves HDV_2107_01 and HDV_2107_03. The (limited volume of) used cleaning solution is drained through HV_2107_01.
5. Then, thorough rinsing with water is needed to remove the cleaning agent from the connection piping and filter housing.
6. After cleaning, the piping can be dried with helium at 3,5 bar, routed in the same direction as the previous cleaning solution and water. The gas/liquid mixture is sent to the drain.
7. A new filter can be mounted in the filter housing.

9.4.5 Cleaning the retractable probes

Two sensors (AT_2107_01 for pH and temperature and AT_2108_01 for biomass) are retractable from the bioreactor when calibration, cleaning or replacement is needed. In case the bioreactor needs to be cleaned and restarted as well, both sensors will be cleaned in-situ and together with the reactor as described in paragraph 9.4.2. If, however, the bioreactor remains in operation, the probes can be cleaned in their housings. Or they can be manually cleaned, when completely withdrawn from the bioreactor. The procedure is identical for the biomass and pH probe. Cleaning solution is routed through both chambers of the retractable pH probe by opening valves HV_2107_04, and then drained. The procedure is similar for the biomass probe.

9.5 Sterilisation process

9.5.1 Sterilisation of influent tank

Prerequisite: the influent tank must be cleaned and dried.

1. The cooling liquid needs to be removed from the double jacket, prior to sterilisation. This is done by the following steps:
 - a. turn off the heat exchanger HX_2003_01
 - b. position correctly valve H3V_2003_01
 - c. open valve HV_2003_03 to vent the jacket



Document Identification: Detailed design CII	Type	number	Issue	Page : 77 / 90
	TN	80.242	1	

- d. wait until complete drainage of cooling liquid into the vessel VSSL_2003_01
2. New filters are installed in the sanitary liquid filter housings
3. As a first step, steam will be routed towards the sanitary gas filter GF_2004_01,
 - a. with open valve PDV_2500_01, until high temperature is reached and steam trap SF_2500_01 closes.
 - b. opening valve PDV_2500_02 to steam tank-side part of the filter, until steam trap SF_2500_02 closes.
4. Opening valves PDV_2500_19 and PDV_2500_17, until steam trap SF_2500_17 closes. This is done to dewater the pipes.
5. Opening PDV_2400_02 and following valves, towards the sanitary liquid filter LF_2002_01 and
 - a. open valve PDV_2500_09, until steam trap SF_2500_09 closes. Valve PDV_2400_01 remains closed.
 - b. opening valve PDV_2500_10, until steam trap SF_2500_10 closes.
6. Opening valve PDV_2002_01 towards the influent tank. Steam will be subsequently routed through the influent tank and bottom tank valves towards opened valve PDV_2500_13, until steam trap SF_2500_13 closes.
7. Steam is then routed through the spray ball NOZ_2400_01, by opening valve PDV_2400_01.
8. Steam can then as well be routed through the piping in between the influent tank and the bioreactor, by
 - a. closing the bottom tank valves and opening PDV_2006_01. The bypass over the influent pump is used. The bypass over the flow transmitter is opened as well. Similar to the cleaning, the influent pump and sanitary liquid filter can as well be steamed separately from the influent tank by keeping PDV_2006_01 closed and using the direct injection point PDV_2006_03.
 - b. opening valve PDV_2500_11, until steam trap SF_2500_11 closes.
 - c. Opening valve PDV_2500_14, until steam trap SF_2500_14 closes.
9. After steaming, the piping and the tank can be dried with sterile helium at 3,5 bar, routed through valve PDV_2500_19, in the same direction as the previous steaming.
10. The cooling liquid needs to be pumped back to the double jacket. This is done by the following steps:
 - a. close valve HV_2003_03
 - b. position correctly valves H3V_2003_01 and _02
 - c. switch on the heat exchanger HX_2003_01 and wait until the content is pumped from vessel VSSL_2003_01 back to the double jacket
 - d. position correctly valves H3V_2003_01 and _02

9.5.2 Sterilisation of bioreactor

Prerequisite: the bioreactor must be cleaned and dried.

1. The cooling liquid needs to be removed from the double jacket, prior to sterilisation. This is done by the following steps:
 - a. turn off the heat exchanger HX_2103_01



Document Identification: Detailed design CII	Type	number	Issue	Page : 78 / 90
	TN	80.242	1	

- b. position correctly valve H3V_2103_01
 - c. open valve HV_2103_03 to vent the jacket
 - d. wait until complete drainage of cooling liquid into the vessel VSSL_2103_01
2. As a first step, steam will be routed towards the sanitary gas filter GF_2104_01:
 - a. with open valve PDV_2500_03, until high temperature is reached and steam trap SF_2500_03 closes.
 - b. Opening valve PDV_2500_04 to steam tank-side part of the filter, until steam trap SF_2500_04 closes.
3. Steam can then either be routed backwards through the effluent piping towards the bioreactor (valve PDV_2106_02) or through the spray ball NOZ_2400_03 (valve PDV_2400_04)
4. Steam can then be routed over the CO₂ loop:
 - a. opening valve PDV_2500_07 until steam trap SF_2500_07 closes
 - b. opening valve PDV_2500_08 until steam trap SF_2500_08 closes
 - c. steam can then be routed towards the top or the bottom of the bioreactor by opening the correct valves.
 - d. steam towards bioreactor
5. Steam will be routed through the condenser and over the sanitary gas filter until steam trap SF_2500_23 closes.
6. Steam will be subsequently routed through the last part of the piping in between the bioreactor and bottom tank valves towards opened valve PDV_2500_14, until steam trap SF_2500_14 closes.
7. Steam can then as well be sent through a further part of the effluent piping, by closing connections towards the bioreactor and opening valve PDV_2106_02, closing PDV_2106_01 and opening all subsequent valves towards steam trap SF_2500_12, until it closes at high temperature.
8. After steaming, the piping and the tank can be dried with sterile helium at 3,5 bar, routed through valve PDV_2500_20, in the same direction as the previous steaming. For the CO₂ circuit, CO₂ itself can be used.
9. The cooling liquid needs to be pumped back to the double jacket. This is done by the following steps:
 - a. close valve HV_2103_03
 - b. position correctly valves H3V_2103_01 and _02
 - c. switch on the heat exchanger HX_2103_01 and wait until the content is pumped from vessel VSSL_2103_01 back to the double jacket
 - d. position correctly valves H3V_2103_01 and _02

9.5.3 Sterilisation of effluent tank

Prerequisite: the effluent tank must be cleaned and dried.

1. The cooling liquid needs to be removed from the double jacket, prior to sterilisation. This is done by the following steps:
 - a. turn off the heat exchanger HX_2203_01
 - b. position correctly valve H3V_2203_01



Document Identification: Detailed design CII	Type	number	Issue	Page : 79 / 90
	TN	80.242	1	

- c. open valve HV_2203_03 to vent the jacket
 - d. wait until complete drainage of cooling liquid into the vessel VSSL_2203_01
2. As a first step, steam will be routed towards the sanitary gas filter GF_2204_01,
 - a. with open valve PDV_2500_05, until high temperature is reached and steam trap SF_2500_05 closes.
 - b. opening valve PDV_2500_06 to steam tank-side part of the filter, until steam trap SF_2500_06 closes.
3. Opening valve PDV_2204_01 towards the effluent tank. Steam will be subsequently routed through the effluent tank and bottom tank valves towards opened valve PDV_2500_16, until steam trap SF_2500_16 closes.
4. Steam will then be routed through the spray ball NOZ_2400_02, by opening valve PDV_2400_03.
5. Steam can then as well be routed through the last part of the piping in between the bioreactor and the effluent tank,
 - a. by closing the bottom tank valves and opening PDV_2006_01.
 - b. opening valve PDV_2500_12, until steam trap SF_2500_12 closes.
6. After steaming, the piping and the tank are dried with sterile helium at 3,5 bar, routed in the same direction as the previous steaming.
7. The cooling liquid needs to be pumped back to the double jacket. This is done by the following steps:
 - a. close valve HV_2203_03
 - b. position correctly valves H3V_2203_01 and _02
 - c. switch on the heat exchanger HX_2203_01 and wait until the content is pumped from vessel VSSL_2203_01 back to the double jacket
 - d. position correctly valves H3V_2203_01 and _02

9.5.4 Sterilisation of acid/base lines

This procedure should be followed whenever a filter before the acid or base bottle needs to be replaced. Sterilisation follows a previous cleaning step. The procedure is written for base, but is identical for acid.

1. Steam is routed through the connection piping by opening valve HDV_2500_01 until steam trap SF_2500_19 closes.
2. After steaming, the piping can be dried with helium at 3,5 bar, routed in the same direction as the previous steam. The gas/liquid mixture is sent to the drain.

9.5.5 Sterilisation of the retractable probes

Two sensors (AT_2107_01 for pH and temperature and AT_2108_01 for biomass) are retractable from the bioreactor when calibration or replacement is needed. In case the bioreactor needs to be steamed as well, both sensors will be sterilised together with the reactor as described in paragraph 9.5.2. If, however, the bioreactor remains in operation, the probes can be steamed, after replacement, in their housings. Steam is routed through both chambers of the retractable pH probe. Valve HDV_2500_03 is open, until steam trap SF_2500_22 closes. The procedure is similar for the biomass probe.

Document Identification: Detailed design CII	Type	number	Issue	Page : 80 / 90
	TN	80.242	1	

9.5.6 Sterilisation of inoculum line

This procedure should be followed in case the bioreactor needs to be inoculated with *Rhodospirillum rubrum* at start-up.

1. Connect the sterile and clean steam trap and bottle ATK_2106_01, containing the pure biomass culture to the sterilized bioreactor circuit. Valves HDV_2106_01, _02 and _03 need to be closed.
2. Steam is routed through the connection piping until steam trap SF_2500_21 closes.
3. Valve HDV_2106_04 is then closed.
4. Valves HDV_2106_02 and _03 can now be opened to sent the biomass, backwards through the effluent piping, towards the bioreactor. Helium will be used as a driver for this.
5. After filling, HDV_2106_02 needs to be closed and HDV_2106_01 opened.

9.5.7 Sampling

Three sampling locations are provided at the bottom of respectively the influent tank, photobioreactor and effluent tank. The sampling is conceptually similar to the approach used on the permeate line of compartment I (see final P&ID Compartment I). The vessel in which the sample will be collected is autoclaved with auxiliary valves. It is then connected to the respective sampling location. For the effluent tank sampling, the connection is then steamed by entering steam through PDV_2200_04 and routing it to the sampling vessel (not shown on P&ID). A similar procedure is followed for the influent tank and photobioreactor.

The configuration at the bottom of the effluent tank also allows sterile transfer of effluent to Compartment III.

10. Control values

The control system for the bioreactor will be done at level 0, using a PLC. The controlled parameters are described below.

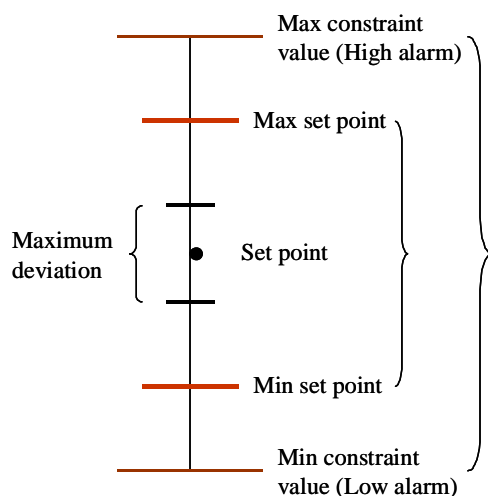


Figure 8: Definition of specifications terms



Document Identification: Detailed design CII	Type	number	Issue	Page : 81 / 90
	TN	80.242	1	

Table 8: Specifications of parameters

Specifications	T influent tank	T bioreactor	T effluent tank
Nominal/ set point value	4°C	30°C	4°C
Max. deviation	+/- 1°C	+/- 0.5°C	+/- 1°C
Min. set point value	2°C	29°C	2°C
Max. set point value	8°C	31°C	8°C
Min. constraint value	0.5°C	25°C	0.5°C
Max. constraint value	10°C	35°C	10°C
Control response time	0.5 h	1 h	0.5 h
Start-up			
Nominal operation			
Possible disturbances	T room Addition of influent	T room T illumination Addition of influent at 4°C	T room Addition of biomass/effluent at 30°C

Specifications	pH photobioreactor	Flow (influent feeding and effluent withdrawal)	Level photobioreactor (calculated from flows)
Nominal/ set point value	7.0	0.5 l/h	13.2 l
Max. deviation	+/- 0.15	+/- 10%	+/- 10%
Min. set point value	6.8	0.24 l/h	13.1
Max. set point value	7.2	0.94 l/h	13.3
Min. constraint value	6.5	0.15 l/h	12.7
Max. constraint value	7.5	Not applicable	13.7
Control response time	5 min	0.5 h	0.5 h
Possible disturbances	Addition of influent Variation in influent composition		Deviation on pump and flow meter

Specifications	P influent tank	P bioreactor	P effluent tank
Nominal/ set point value	100 mbar	100 mbar	100 mbar
Min. operation value	80 mbar	80 mbar	80 mbar
Max. operation value	120 mbar	120 mbar	120 mbar
Min. constraint value	5 mbar	40 mbar	5 mbar
Max. constraint value	200 mbar	200 mbar	200 mbar
Control response time	5 s	5 s	5 s
Possible disturbances	Feeding the bioreactor Filling the influent tank Opening the influent tank Nitrogen flush	Inlet influent Outlet filtrate Drain Nitrogen flush Sampling	Drain of tank Inlet filtrate



Document Identification: Detailed design CII	Type	number	Issue	Page : 82 / 90
	TN	80.242	1	

Alarms will be programmed in case of disturbances or failures.



Document Identification: Detailed design CII	Type	number	Issue	Page : 83 / 90
	TN	80.242	1	

11. PLC I/O list

Tag number	Description	AI	AO	DI	DO
	Emergency Stop			Relay	
PDV_2000_01	Pneumatically operated 2-way Sanitary Diaphragm Tank Bottom Valve, on tank bottom			24Vdc PNP	
PDV_2000_02	Pneumatically operated 3 x 2-way Sanitary Diaphragm Valve (Triverter), below tank			24Vdc PNP	
PDV_2000_03				24Vdc PNP	
PDV_2000_04				24Vdc PNP	
PV_2000_01	Pneumatically operated 2-way Ball Valve			24Vdc PNP	
BLE_2001_01	Magnetic Coupled Stirrer at a variable frequency	4 – 20 mA	4 – 20 mA	Relay	Relay
PDV_2002_01	Pneumatically operated 2-way Sanitary Diaphragm Valve, on top of the tank			24Vdc PNP	
PDV_2002_02	Pneumatically operated 2-way Sanitary Diaphragm Valve, zero dead leg, before liquid filter LF_2002_01			24Vdc PNP	
PDV_2002_03	Pneumatically operated 3 x 2-way Sanitary Diaphragm Valve (Triverter), before liquid filter LF_2002_01			24Vdc PNP	
PDV_2002_04				24Vdc PNP	
PDV_2002_05				24Vdc PNP	
PV_2002_01	Pneumatically operated 2-way Ball Valve			24Vdc PNP	
HX_2003_01	Heat Exchanger influent tank	4 – 20 mA	4 – 20 mA	Relay	Relay
TT_2003_01	Temperature Transmitter	4 – 20 mA			
PDV_2004_01	Pneumatically operated 2-way Sanitary Diaphragm Valve, on top of the tank, after the gas filter GF_2004_01			24Vdc PNP	



Document Identification:
Detailed design CII

Type
TN

number
80.242

Issue
1

Page : 84 / 90

Tag number	Description	AI	AO	DI	DO
PT_2004_01	Pressure Transmitter	4 – 20 mA			
LS_2005_01	Level Switch Low			24Vdc PNP	
LS_2005_02	Level Switch High			24Vdc PNP	
LT_2005_01	Level Transmitter	4 – 20 mA			
FT_2006_01	Flow Transmitter, Coriolis mass flow measuring system.	4 – 20 mA			
GP_2006_01	Magnetic Drive Gear Pump with steam bypass and speed control, CIP & SIP capability	4 – 20 mA	4 – 20 mA	Relay	Relay
PDV_2006_01	Pneumatically operated 2-way Sanitary Diaphragm Tank Bottom Valve, on tank bottom			24Vdc PNP	
PDV_2006_02	Pneumatically operated 2-way Sanitary Diaphragm Valve, bypass pump GP_2006_01			24Vdc PNP	
PDV_2006_03	Pneumatically operated 2 x 2-way Sanitary Diaphragm Valve (Diverter), before pump GP_2006_01			24Vdc PNP	
PDV_2006_04				24Vdc PNP	
PDV_2006_05				24Vdc PNP	
PDV_2006_06				24Vdc PNP	
PDV_2006_07	Pneumatically operated 3 x 2-way Sanitary Diaphragm Valve (Triverter), after liquid filter LF_2006_01			24Vdc PNP	
PDV_2006_08				24Vdc PNP	
PV_2006_01	Pneumatically operated 2-way Ball Valve			24Vdc PNP	
PV_2006_02	Pneumatically operated 2-way Ball Valve			24Vdc PNP	
LSS_2100_01	Light Supply System with adjustable light intensity / loop and integrated cooling system, 2 separated loops (see notes)				
PDV_2100_01	Pneumatically operated 2-way Sanitary Diaphragm Tank Bottom Valve, on reactor bottom (if possible)			24Vdc PNP	
PDV_2100_02	Pneumatically operated 3 x 2-way Sanitary Diaphragm Valve (Triverter), below reactor			24Vdc PNP	
PDV_2100_03				24Vdc PNP	



Document Identification:
Detailed design CII

Type
TN

number
80.242

Issue
1

Page : 85 / 90

Tag number	Description	AI	AO	DI	DO		
PDV_2100_04				24Vdc PNP			
PV_2100_01	Pneumatically operated 2-way Ball Valve			24Vdc PNP			
BLE_2101_01	Magnetic Coupled Stirrer at a variable frequency, speed in normal operation is 300 – 400 rpm	4 – 20 mA	4 – 20 mA	Relay	Relay		
HX_2103_01	Heat Exchanger bioreactor	4 – 20 mA	4 – 20 mA	Relay	Relay		
TT_2103_01	Temperature Transmitter	4 – 20 mA					
PDV_2104_01	Pneumatically operated 2-way Sanitary Diaphragm Valve, on top of the reactor, after the gas filter GF_2104_01						
PT_2104_01	Pressure Transmitter	4 – 20 mA					
LS_2105_01	Level Switch Low			24Vdc PNP			
LS_2105_02	Level Switch High, with option “Foam Detection”			24Vdc PNP			
FT_2106_01	Flow Transmitter, Coriolis mass flow measuring system.	4 – 20 mA					
GP_2106_01	Magnetic Drive Gear Pump with steam bypass and speed control, CIP & SIP capability	4 – 20 mA	4 – 20 mA	Relay	Relay		
PDV_2106_01	Pneumatically operated 2-way Sanitary Diaphragm Valve, on top of the reactor			24Vdc PNP			
PDV_2106_02	Pneumatically operated 2-way Sanitary Diaphragm Valve, zero dead leg			24Vdc PNP			
PDV_2106_03	Pneumatically operated 2-way Sanitary Diaphragm Valve, bypass pump GP_2106_01			24Vdc PNP			
PDV_2106_04				24Vdc PNP			
PDV_2106_05	Pneumatically operated 3 x 2-way Sanitary Diaphragm Valve (Triverter), after pump GP_2106_01			24Vdc PNP			
PDV_2106_06				24Vdc PNP			
PDV_2106_07		Pneumatically operated 2-way Sanitary Diaphragm Valve, on top of the reactor			24Vdc PNP		



Document Identification:
Detailed design CII

Type
TN

number
80.242

Issue
1

Page : 86 / 90

Tag number	Description	AI	AO	DI	DO
PV_2106_01	Pneumatically operated 2-way Ball Valve			24Vdc PNP	
AT_2107_01	pH measurement, pH sensor with automatically retractable sterilizable housing, and position indication	4 – 20 mA		24Vdc PNP	
PDV_2107_01	Pneumatically operated 2-way Sanitary Diaphragm Valve, zero dead leg, for steam sterilizable connection to base			24Vdc PNP	
PDV_2107_02	Pneumatically operated 2-way Sanitary Diaphragm Valve, zero dead leg, for steam sterilizable connection to acid			24Vdc PNP	
PP_2107_01	Peristaltic Pump for dosing base		4 – 20 mA		Relay, 24Vdc PNP
PP_2107_02	Peristaltic Pump for dosing acid		4 – 20 mA		Relay, 24Vdc PNP
WT_2107_01	Balance for base				
WT_2107_02	Balance for acid				
AT_2108_01	Turbidity measurement, turbidity sensor with automatically retractable sterilizable housing and position indication	4 – 20 mA		24Vdc PNP	
PDV_2109_01	Pneumatically operated 2-way Sanitary Diaphragm Valve, after the gas filter GF_2109_01			24Vdc PNP	
PDV_2109_02	Pneumatically operated 2-way Sanitary Diaphragm Valve, after the gas filter GF_2109_01			24Vdc PNP	
PDV_2200_01	Pneumatically operated 2-way Sanitary Diaphragm Tank Bottom Valve, on tank bottom			24Vdc PNP	
PDV_2200_02	Pneumatically operated 3 x 2-way Sanitary Diaphragm Valve (Triverter), below tank			24Vdc PNP	
PDV_2200_03				24Vdc PNP	
PDV_2200_04				24Vdc PNP	
PV_2200_01	Pneumatically operated 2-way Ball Valve			24Vdc PNP	
BLE_2201_01	Magnetic Coupled Stirrer at a variable frequency	4 – 20 mA	4 – 20 mA	Relay	Relay



Document Identification:
Detailed design CII

Type
TN

number
80.242

Issue
1

Page : 87 / 90

Tag number	Description	AI	AO	DI	DO
HX_2203_01	Heat Exchanger effluent tank	4 – 20 mA	4 – 20 mA	Relay	Relay
TT_2203_01	Temperature Transmitter	4 – 20 mA			
PDV_2204_01	Pneumatically operated 2-way Sanitary Diaphragm Valve, on top of the tank, after the gas filter GF_2204_01			24Vdc PNP	
PT_2204_01	Pressure Transmitter	4 – 20 mA			
LS_2205_01	Level Switch Low			24Vdc PNP	
LS_2205_02	Level Switch High			24Vdc PNP	
LT_2205_01	Level Transmitter	4 – 20 mA			
FQRC_2300_01	Gas Flow Controller	4 – 20 mA	4 – 20 mA		
HX_2300_03	Heated hose with integrated temperature sensor and controller. Exchangeable inner tube			Relay	
PDV_2300_01	Pneumatically operated 2-way Sanitary Diaphragm Valve, to gas filter GF_2004_01			24Vdc PNP	
PDV_2300_02	Pneumatically operated 2-way Sanitary Diaphragm Valve, to gas filter GF_2004_01			24Vdc PNP	
PDV_2300_03	Pneumatically operated 2-way Sanitary Diaphragm Valve, to gas filter GF_2104_01			24Vdc PNP	
PDV_2300_04	Pneumatically operated 2-way Sanitary Diaphragm Valve, to gas filter GF_2104_01			24Vdc PNP	
PDV_2300_05	Pneumatically operated 2-way Sanitary Diaphragm Valve, to gas filter GF_2204_01			24Vdc PNP	
PDV_2300_06	Pneumatically operated 2-way Sanitary Diaphragm Valve, to gas filter GF_2204_01			24Vdc PNP	
PDV_2300_07	Pneumatically operated 2-way Sanitary Diaphragm Valve, to gas filter GF_2109_01			24Vdc PNP	



Document Identification:
Detailed design CII

Type
TN

number
80.242

Issue
1

Page : 88 / 90

Tag number	Description	AI	AO	DI	DO
PDV_2300_08	Pneumatically operated 2-way Sanitary Diaphragm Valve, to gas filter GF_2004_01			24Vdc PNP	
PDV_2300_09	Pneumatically operated 2-way Sanitary Diaphragm Valve, to gas filter GF_2104_01			24Vdc PNP	
PDV_2300_10	Pneumatically operated 2-way Sanitary Diaphragm Valve, to gas filter GF_2204_01			24Vdc PNP	
PDV_2300_11	Pneumatically operated 2-way Sanitary Diaphragm Valve, to gas filter GF_2109_01			24Vdc PNP	
PV_2300_01	Pneumatically operated 2-way Ball Valve			24Vdc PNP	
PV_2300_02	Pneumatically operated 2-way Ball Valve			24Vdc PNP	
PV_2300_03	Pneumatically operated 2-way Ball Valve			24Vdc PNP	
PDV_2400_01	Pneumatically operated 2-way Sanitary Diaphragm Valve, to NOZ_2400_01			24Vdc PNP	
PDV_2400_02	Pneumatically operated 2-way Sanitary Diaphragm Valve, to LF_2002_01			24Vdc PNP	
PDV_2400_03	Pneumatically operated 2-way Sanitary Diaphragm Valve, to NOZ_2400_02			24Vdc PNP	
PDV_2400_04	Pneumatically operated 2-way Sanitary Diaphragm Valve, to NOZ_2400_03			24Vdc PNP	
PV_2400_01	Pneumatically operated 2-way Ball Valve, to influent tank			24Vdc PNP	
PV_2400_02	Pneumatically operated 2-way Ball Valve, to effluent tank			24Vdc PNP	
PV_2400_03	Pneumatically operated 2-way Ball Valve, to bioreactor			24Vdc PNP	
PV_2400_04	Pneumatically operated 2-way Ball Valve, retour cleaning solution influent tank			24Vdc PNP	
PV_2400_05	Pneumatically operated 2-way Ball Valve, retour cleaning solution LF_2102_01			24Vdc PNP	



Document Identification:
Detailed design CII

Type
TN

number
80.242

Issue
1

Page : 89 / 90

Tag number	Description	AI	AO	DI	DO
PV_2400_06	Pneumatically operated 2-way Ball Valve, retour cleaning solution bioreactor			24Vdc PNP	
PV_2400_07	Pneumatically operated 2-way Ball Valve, retour cleaning solution effluent tank			24Vdc PNP	
PV_2400_08	Pneumatically operated 2-way Ball Valve, retour cleaning solution after GP_2106_01			24Vdc PNP	
PDV_2500_01	Pneumatically operated 2-way Sanitary Diaphragm Valve, before gas filter GF_2004_01			24Vdc PNP	
PDV_2500_02	Pneumatically operated 2-way Sanitary Diaphragm Valve, after gas filter GF_2004_01			24Vdc PNP	
PDV_2500_03	Pneumatically operated 2-way Sanitary Diaphragm Valve, before gas filter GF_2104_01			24Vdc PNP	
PDV_2500_04	Pneumatically operated 2-way Sanitary Diaphragm Valve, after gas filter GF_2104_01			24Vdc PNP	
PDV_2500_05	Pneumatically operated 2-way Sanitary Diaphragm Valve, before gas filter GF_2204_01			24Vdc PNP	
PDV_2500_06	Pneumatically operated 2-way Sanitary Diaphragm Valve, after gas filter GF_2204_01			24Vdc PNP	
PDV_2500_07	Pneumatically operated 2-way Sanitary Diaphragm Valve, before gas filter GF_2109_01			24Vdc PNP	
PDV_2500_08	Pneumatically operated 2-way Sanitary Diaphragm Valve, after gas filter GF_2109_01			24Vdc PNP	
PDV_2500_09	Pneumatically operated 2-way Sanitary Diaphragm Valve, before liquid filter LF_2002_01			24Vdc PNP	
PDV_2500_10	Pneumatically operated 2-way Sanitary Diaphragm Valve, zero dead leg, after liquid filter LF_2002_01			24Vdc PNP	
PDV_2500_11	Pneumatically operated 2-way Sanitary Diaphragm Valve, before liquid filter LF_2102_01			24Vdc PNP	
PDV_2500_12	Pneumatically operated 2-way Sanitary Diaphragm Valve, zero dead			24Vdc PNP	



Document Identification: Detailed design CII	Type	number	Issue	Page : 90 / 90
	TN	80.242	1	

Tag number	Description	AI	AO	DI	DO
	leg, after gear pump GP_2106_01 and before effluent tank				
PDV_2500_13	Pneumatically operated 2-way Sanitary Diaphragm Valve, zero dead leg, after influent tank			24Vdc PNP	
PDV_2500_14	Pneumatically operated 2-way Sanitary Diaphragm Valve, zero dead leg, after liquid filter LF_2102_01			24Vdc PNP	
PDV_2500_15	Pneumatically operated 2-way Sanitary Diaphragm Valve, zero dead leg, after bioreactor			24Vdc PNP	
PDV_2500_16	Pneumatically operated 2-way Sanitary Diaphragm Valve, zero dead leg, after effluent tank			24Vdc PNP	
PDV_2500_17	Pneumatically operated 2-way Sanitary Diaphragm Valve, zero dead leg, before influent tank			24Vdc PNP	
PDV_2500_18	Pneumatically operated 2-way Sanitary Diaphragm Valve, zero dead leg, after interface CII-01			24Vdc PNP	
PDV_2500_19	Pneumatically operated 2-way Sanitary Diaphragm Valve, to influent tank			24Vdc PNP	
PDV_2500_20	Pneumatically operated 2-way Sanitary Diaphragm Valve, to bioreactor			24Vdc PNP	
PDV_2500_21	Pneumatically operated 2-way Sanitary Diaphragm Valve, to effluent tank			24Vdc PNP	
PDV_2500_22	Pneumatically operated 2-way Sanitary Diaphragm Valve, zero dead leg, before pump GP_2006_01			24Vdc PNP	
PDV_2500_23	Pneumatically operated 2-way Sanitary Diaphragm Valve, after gas filter GF_2300_01			24Vdc PNP	
PDV_2500_24	Pneumatically operated 2-way Sanitary Diaphragm Valve, zero dead leg, before flow transmitter FT_2006_01			24Vdc PNP	
PDV_2500_25	Pneumatically operated 2-way Sanitary Diaphragm Valve, zero dead leg, after flow transmitter FT_2006_01			24Vdc PNP	
PDV_2500_26	Pneumatically operated 2-way Sanitary Diaphragm Valve, zero dead leg, before flow transmitter FT_2106_01			24Vdc PNP	



Document Identification:
Detailed design CII

Type
TN

number
80.242

Issue
1

Page : 91 / 91

Tag number	Description	AI	AO	DI	DO
PDV_2500_27	Pneumatically operated 2-way Sanitary Diaphragm Valve, zero dead leg, after flow transmitter FT_2106_01			24Vdc PNP	
PV_2500_01	Pneumatically operated 2-way Ball Valve, to gas filter GF_2004_01			24Vdc PNP	
PV_2500_02	Pneumatically operated 2-way Ball Valve, to gas filter GF_2104_01			24Vdc PNP	
PV_2500_03	Pneumatically operated 2-way Ball Valve, to gas filter GF_2204_01			24Vdc PNP	
PV_2500_04	Pneumatically operated 2-way Ball Valve, to gas filter GF_2109_01			24Vdc PNP	
TT_2500_01	Temperature Transmitter	4 – 20 mA			
TT_2500_02	Temperature Transmitter	4 – 20 mA			
TT_2500_03	Temperature Transmitter	4 – 20 mA			
TT_2500_04	Temperature Transmitter	4 – 20 mA			
TT_2500_05	Temperature Transmitter	4 – 20 mA			
TT_2500_06	Temperature Transmitter	4 – 20 mA			
TT_2500_07	Temperature Transmitter	4 – 20 mA			
TT_2500_08	Temperature Transmitter	4 – 20 mA			
TT_2500_09	Temperature Transmitter	4 – 20 mA			
TT_2500_10	Temperature Transmitter	4 – 20 mA			
TT_2500_11	Temperature Transmitter	4 – 20 mA			
TT_2500_12	Temperature Transmitter	4 – 20 mA			
TT_2500_13	Temperature Transmitter	4 – 20 mA			
TT_2500_14	Temperature Transmitter	4 – 20 mA			
TT_2500_15	Temperature Transmitter	4 – 20 mA			



Document Identification:
Detailed design CII

Type
TN

number
80.242

Issue
1

Page : 92 / 92

Tag number	Description		AI	AO	DI	DO	
TT_2500_16	Temperature Transmitter		4 – 20 mA				
TT_2500_17	Temperature Transmitter		4 – 20 mA				
TT_2500_18	Temperature Transmitter		4 – 20 mA				
TT_2500_19	Temperature Transmitter		4 – 20 mA				
TT_2500_20	Temperature Transmitter		4 – 20 mA				
TT_2500_21	Temperature Transmitter		4 – 20 mA				
TT_2500_22	Temperature Transmitter		4 – 20 mA				
TT_2500_23	Temperature Transmitter		4 – 20 mA				
TT_2500_24	Temperature Transmitter		4 – 20 mA				
TT_2500_25	Temperature Transmitter		4 – 20 mA				