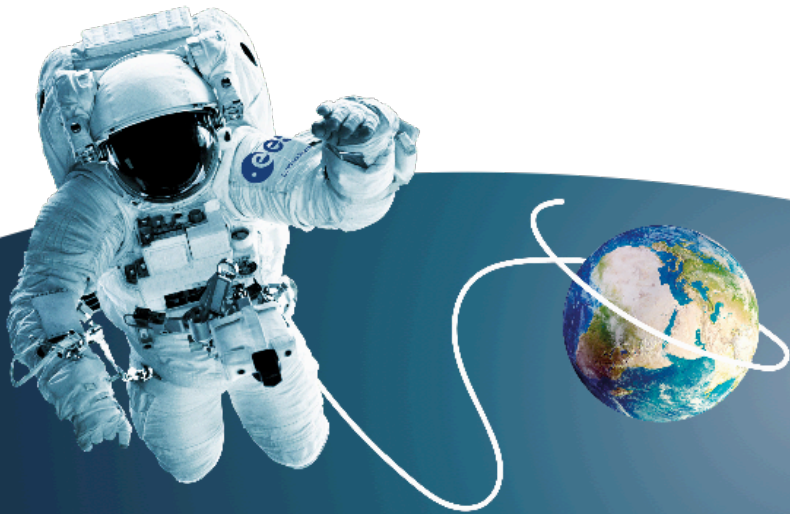




Development status of the nutrient delivery system of PFPU, Precursor of microgravity Food Production Unit

Giorgio Boscheri

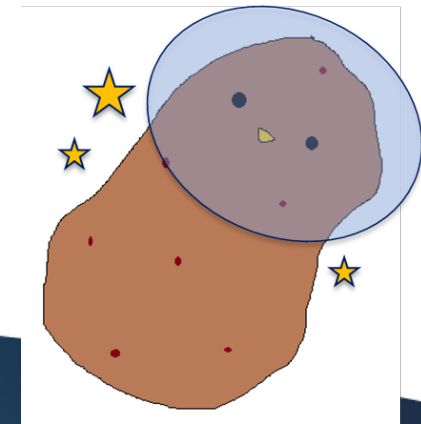
Thales Alenia Space





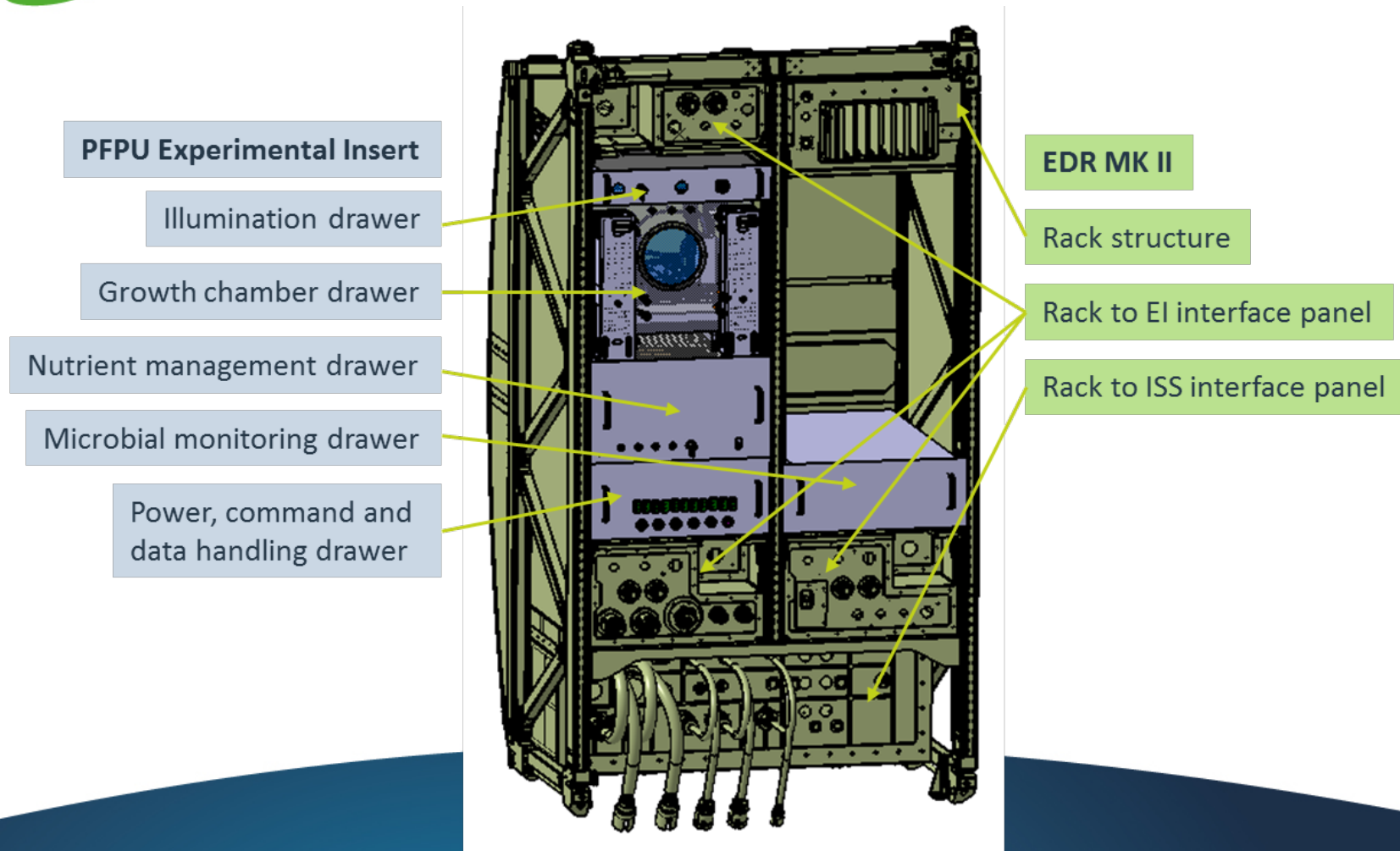
What is PFPU?

- MELISSA project
- Micro-gravity technology demonstrator
- Controlled production of edible tuberous plants from tuber-seed to ready-to-harvest tubers
- Highly modular, allowing compartmentalization into independent, self-contained, process-specific modules
- Step-wise development approach





PFFPU overview





PFFPU Ongoing Developments



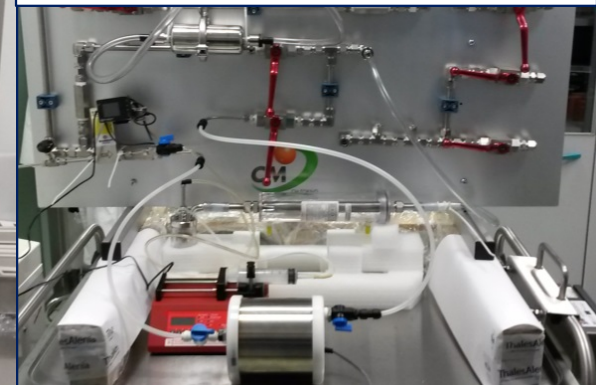
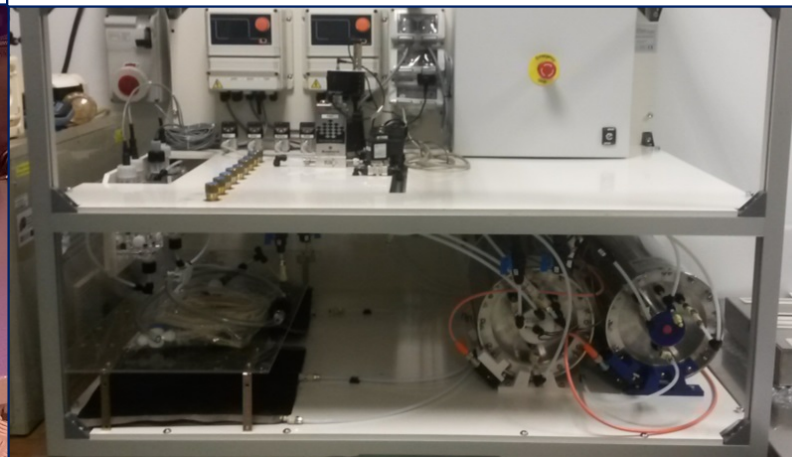
ROOT MODULE



NUTRIENT MODULE



**MICROBIAL
CONTAMINATION
CONTROL MODULE**

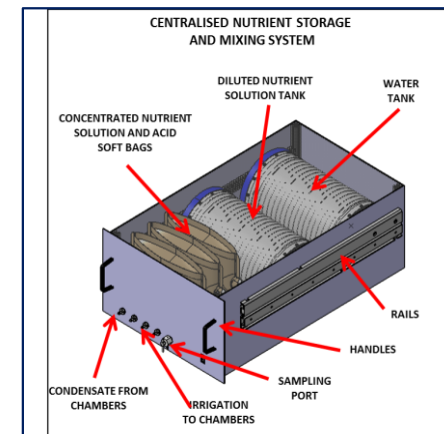
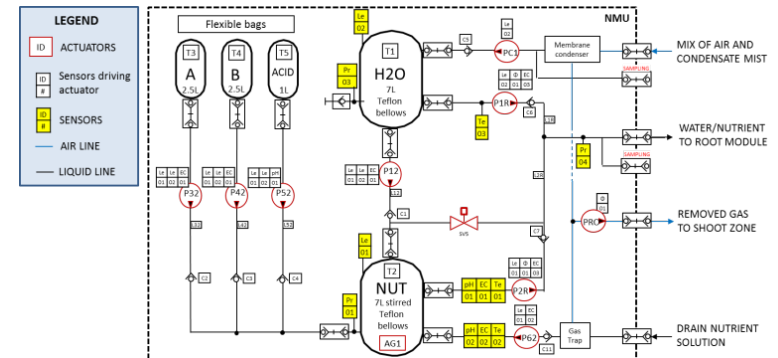




PFFPU Nutrient Delivery System

MAIN FUNCTIONS

- Provide nutrient solution to the root zone
- Provide DI water to the root zone
- Provide air to the tuber zone
- Degas and Store recovered condensate
- Mix and monitor nutrient solution in situ

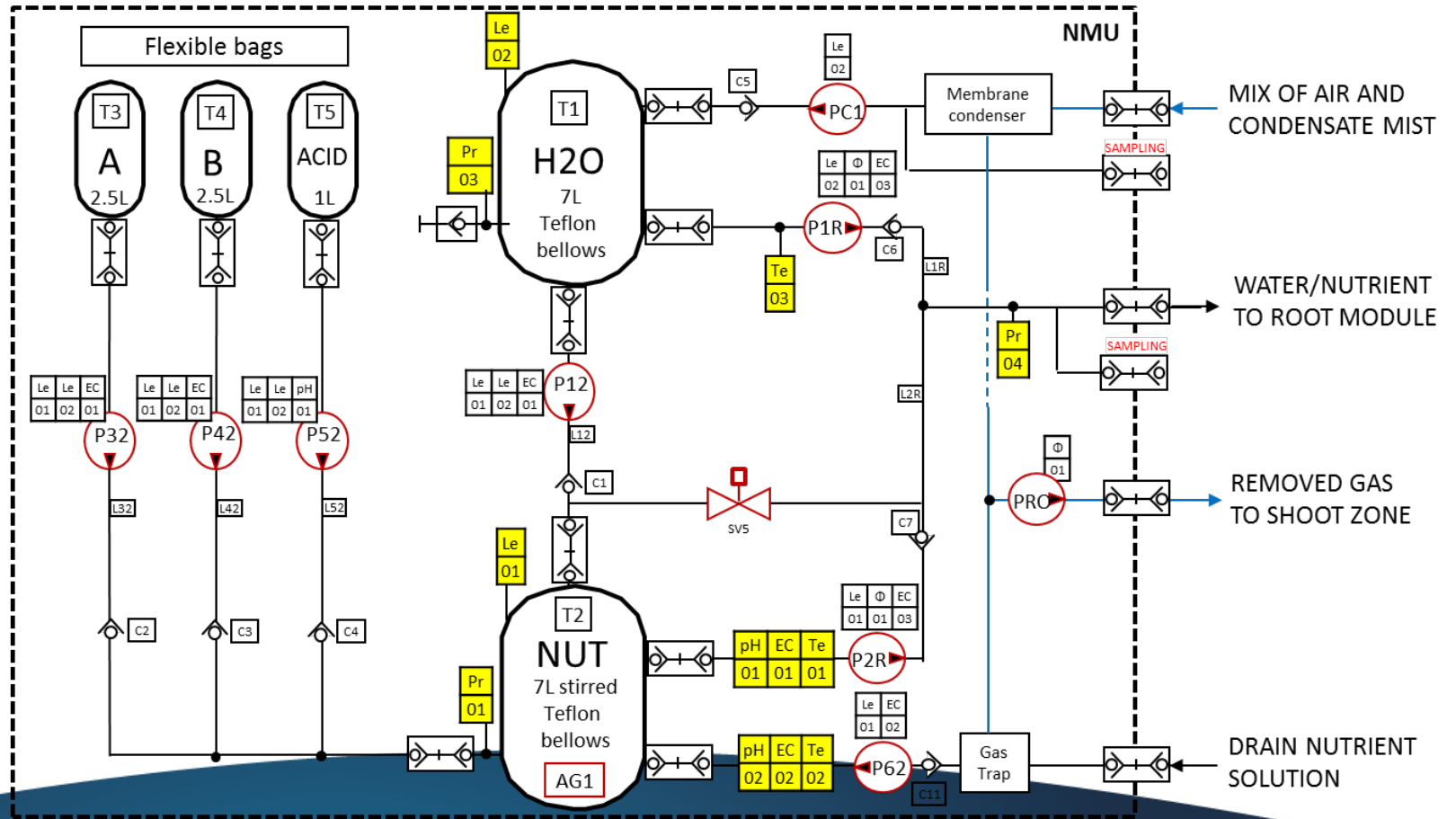




PFFPU Nutrient Delivery System

LEGEND

- ID ACTUATORS
- ID # Sensors driving actuator
- ID # SENSORS
- AIR LINE
- LIQUID LINE

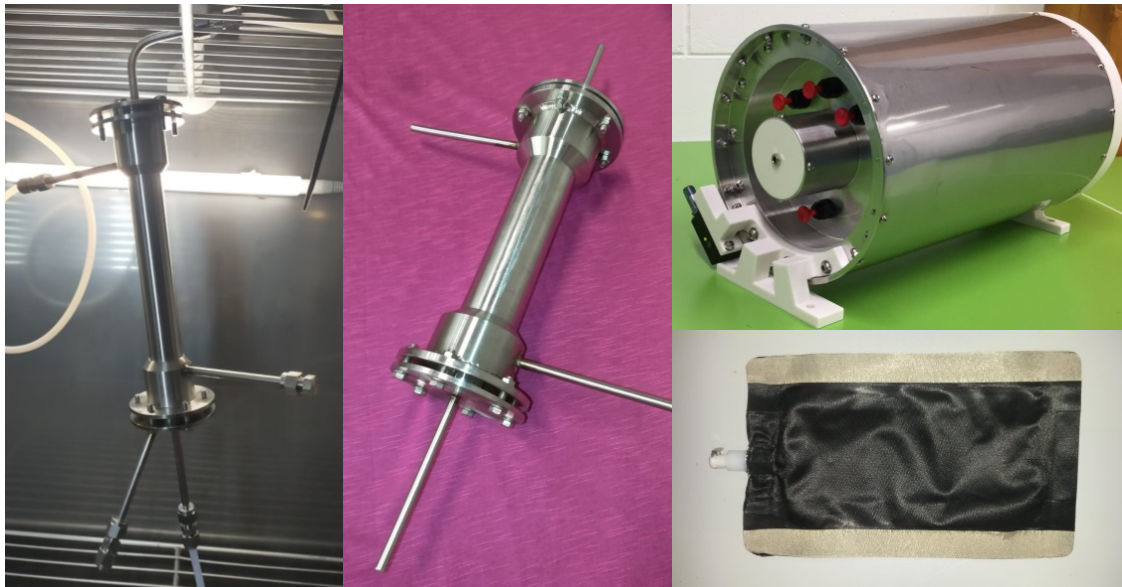




PFFPU Nutrient Delivery System

Custom units

- Bellows reservoir (7L)
- Flexible/soft bag (1L)
- Membrane degasser
- Membrane condenser



COTS units

Sensors:

- pH
- Water level
- EC
- Temperature
- Pressure

Actuators:

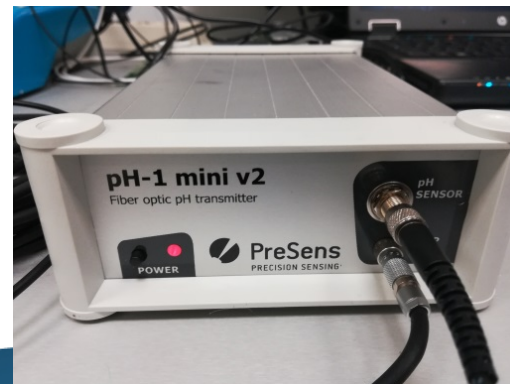
- Pump (delivery)
- Pump (dosing)
- Stirrer



COTS pH sensor

Main perf. requirements

- pH range: 5.5 – 6.5
- pH accuracy: 0.3 at EoL
- Water EC range: 0.2 – 2.0 mS/cm
- Time w/o calibration: 5 months



Tested sensors

Potentiometric

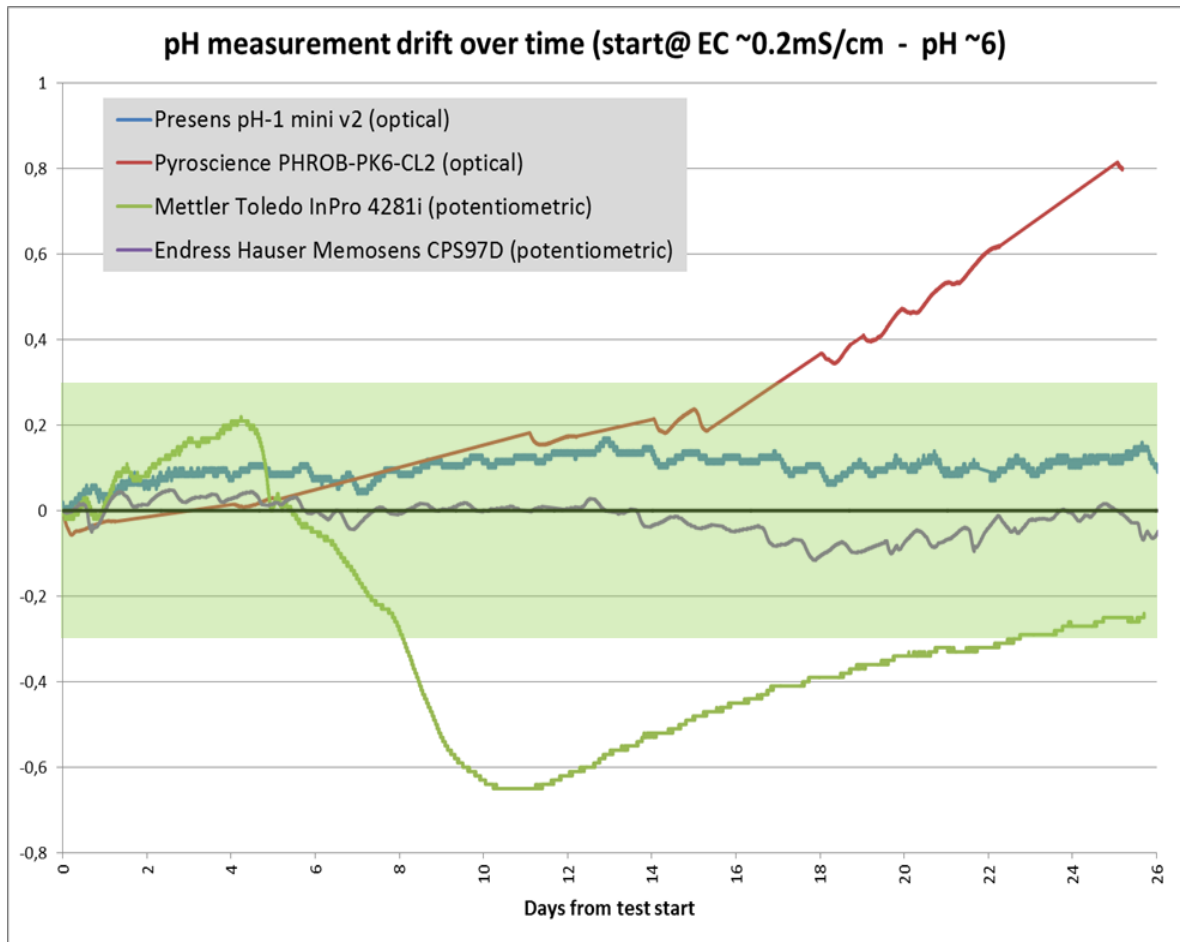
- Endress Hauser Memosens CPS97D
- Mettler Toledo InPro 4281i

Optical

- PreSens PH-1 mini v2
- Pyroscience PHROB-PK6-CL2



COTS pH sensor



	Test campaign @0.2mS/cm	Test campaign @0.5mS/cm	Functional criticalities
Endress Hauser Memosens CPS97D	Acceptable	Acceptable	Gel reference depletion
Mettler Toledo InPro 4281i	Not acceptable	Acceptable	Difficult recovery from microbial contamination
PreSens PH-1 mini v2	Acceptable	Acceptable	None identified
Pyroscience PHROB-PK6-CL2	Not acceptable	Acceptable	Sensor spot detachment

PreSens optical sensor selected as baseline



COTS water level sensor

Main perf. requirements

- Measure bellows reservoir bottom plate displacement up to 25cm
- Accuracy: 0.3 mm (~10ml)
- Minimize reservoir envelope impact



Tested sensors

Laser Displacement Sensor

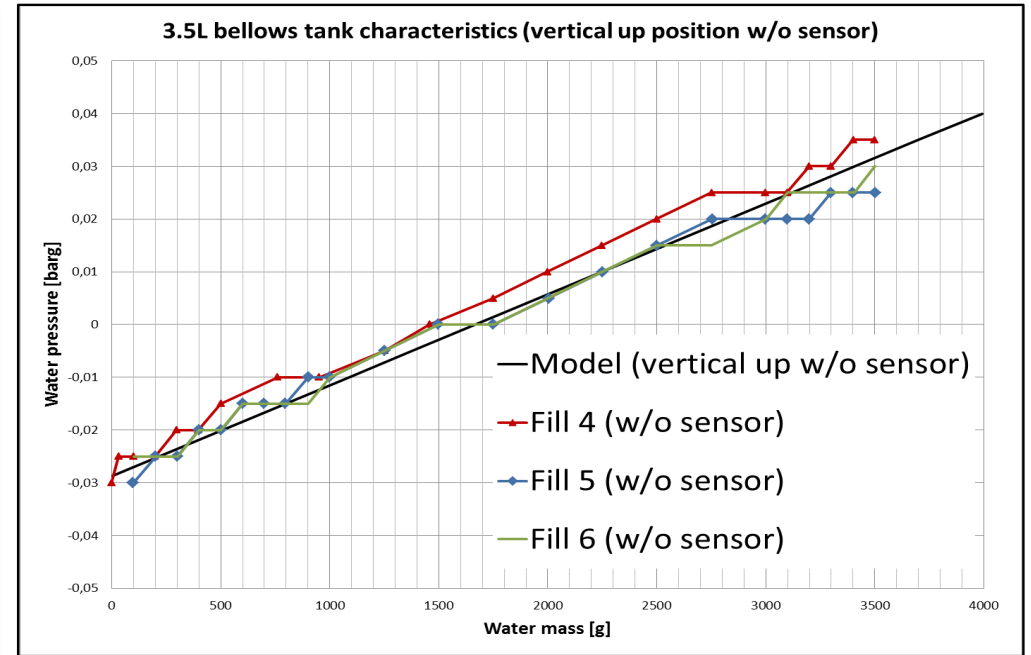
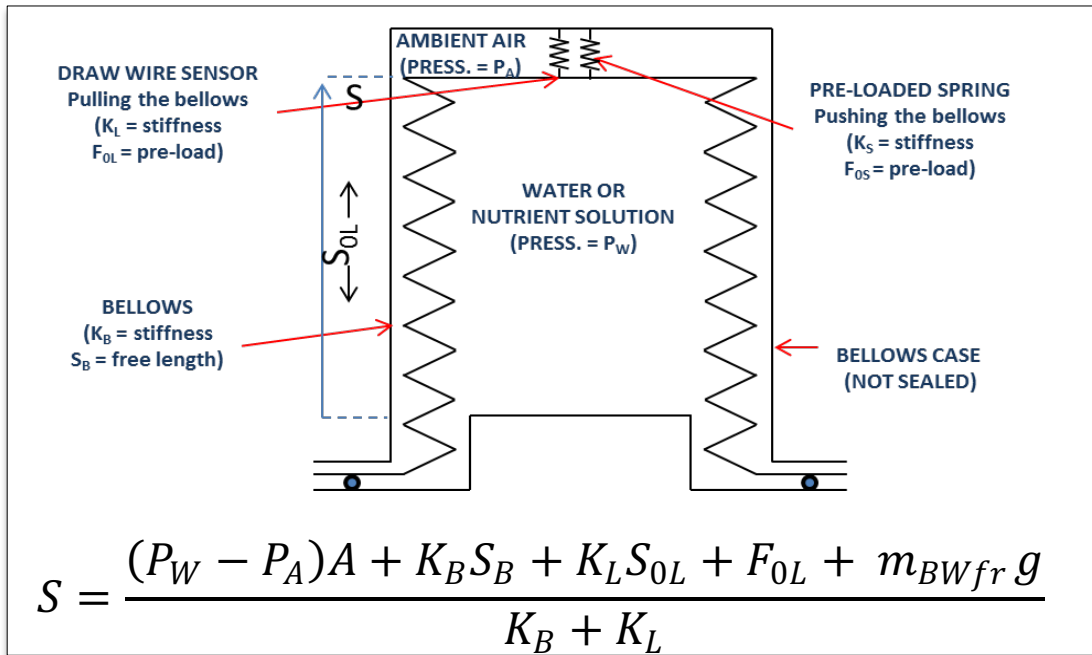
- More compact
- Space qualified unit not available

Draw Wire Sensor

- Less compact
- Space qualified unit available



COTS water level sensor



Both sensor capable of allowing acceptable evaluation of the bellows reservoir water level during both fill and drain cycles



COTS water pumps

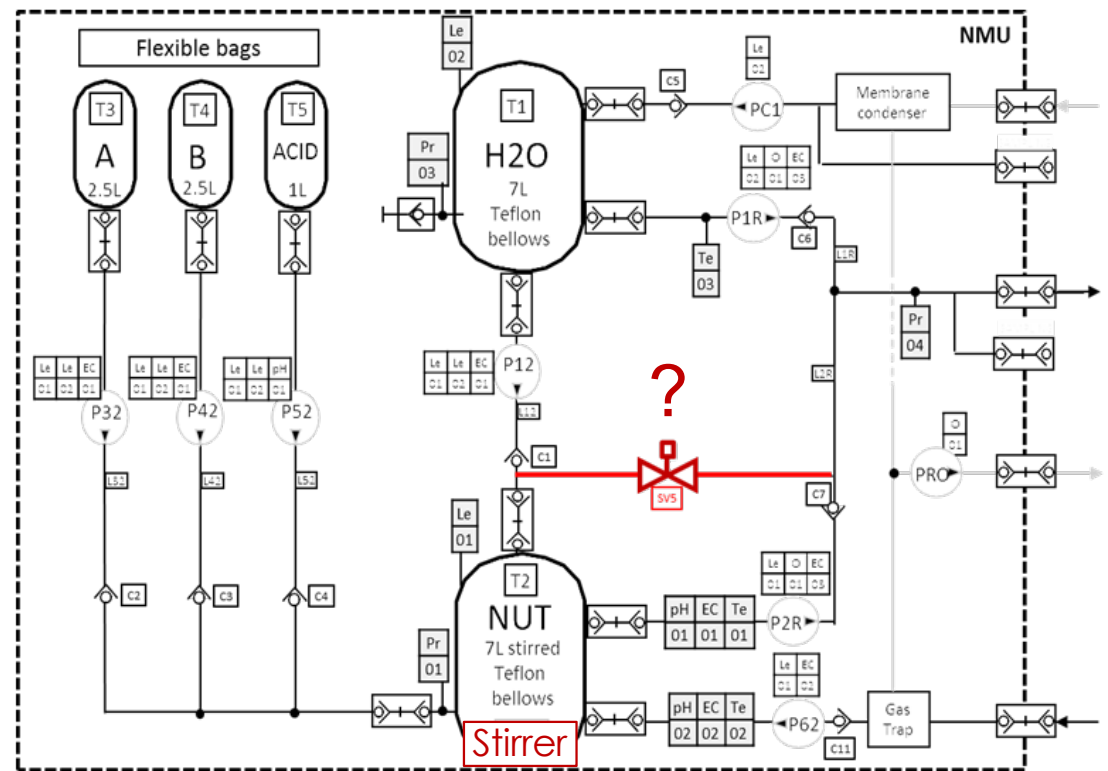
It is possible to cover the NDS water pumping needs (7 pumps) with **only two different units** (one is used in **2 different operative configurations**)

Pump ID.	Pump Model	Water Source	Water Destination	Performance @ 25±5°C	Performance @ 45±5°C
P32/P42/P52	Variable volume dispense pump p/n LPDA1750330H	T3/T4/T5 Conc. Nut. Sol	T2 Diluted Nut. Sol.	Accurate dispensing in the range 0.1-3 ml	Accurate dispensing in the range 0.1-3 ml
P12	Variable volume dispense pump p/n LPDA1750330H	T1 D.I.Water Tank	T2 Diluted Nut. Sol.	> 45 ml/min	> 45 ml/min
P51	Variable volume dispense pump p/n LPDA1750330H	T5 Beker	T1 D.I.Water Tank	> 45 ml/min	> 45 ml/min
P2R/1R	Fixed volume solenoid Pump p/n LPGA2450618D	T2 Diluted Nut. Sol.	T4 Porous plate	> 45 ml/min	> 45 ml/min



COTS stirrer

Description	Time for solution mixing	Pro	Drawbacks
Stirrer + Diffusion	<15s	Mass +	EC value? No redundancy
Diffusion only	>2400s	Mass ++	Time - - EC value?
Recirculation Loop + Diffusion	<80s	Mass + EC value known	Time -
Stirrer + Diffusion + Recirculation Loop	<15s	EC value known Redundancy	Mass -

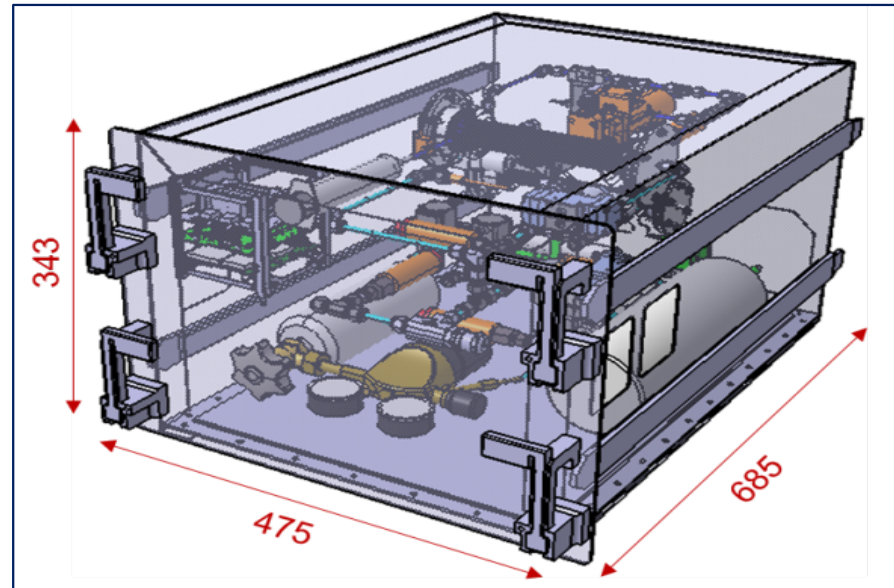


Current baseline includes both stirrer and recirculation loop



Phase-separation modules

Currently under
laboratory testing



Microgravity demonstrator
conceptual design completed



PFFPU - Future work (2021-22)

Module	Activity
Root Module	Test in relevant environment
Nutrient Module	Components verification toward space environmental loads
Illumination Module	Prototyping and testing
Growth Chamber	Prototyping and testing
Temperature Control Module	Prototyping and testing
System	Assembly of above modules for testing (with and w/o crops)

MELISSA



MICRO-ECOLOGICAL
LIFE SUPPORT SYSTEM
ALTERNATIVE

All presented activities were carried on within ESA contract No. 4000114057/14/NL/AT ,
In collaboration with the below project partners



THANK YOU.

Giorgio Boscheri

Thales Alenia Space Italia

Giorgio.boscheri@thalesaleniaspace.com

www.melissafoundation.org

Follow us



PARTNERS

IN COOPERATION WITH

