

Development of a New Experimental Crew Compartment

Adam Harper: Hosokawa Micron Ltd

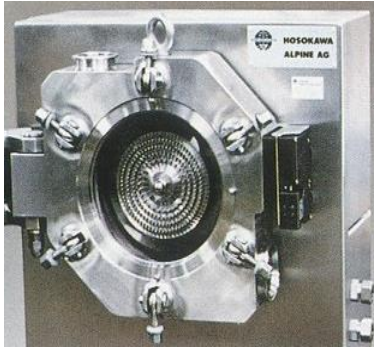
Hosokawa Micron Ltd



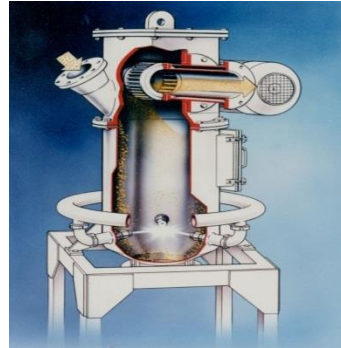
HOSOKAWA MICRON



Hosokawa Technologies



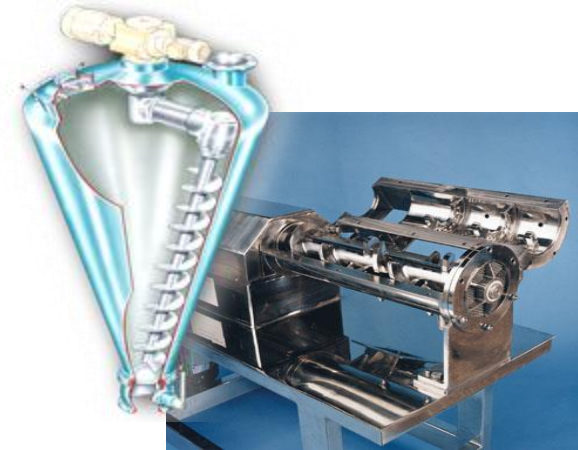
Impact Milling



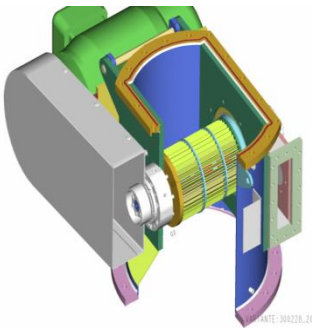
Jet Milling



Drying



Mixing



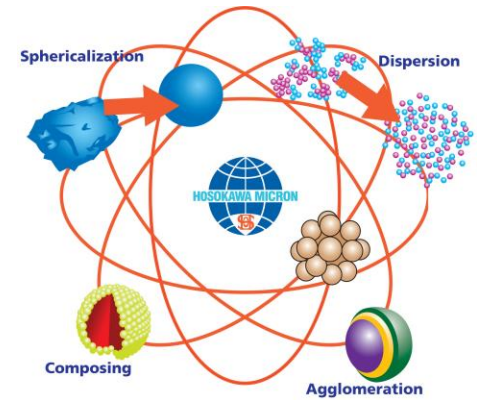
Air Classification



Screening



Agglomerating and Compacting



Nanotechnology and Particle Engineering



HOSOKAWA MICRON



Hosokawa Containment



Drum Filling/Weighing



Laminar Flow Booths



Downflow Booths



Gloveboxes/Isolators



Process Integrated Gloveboxes



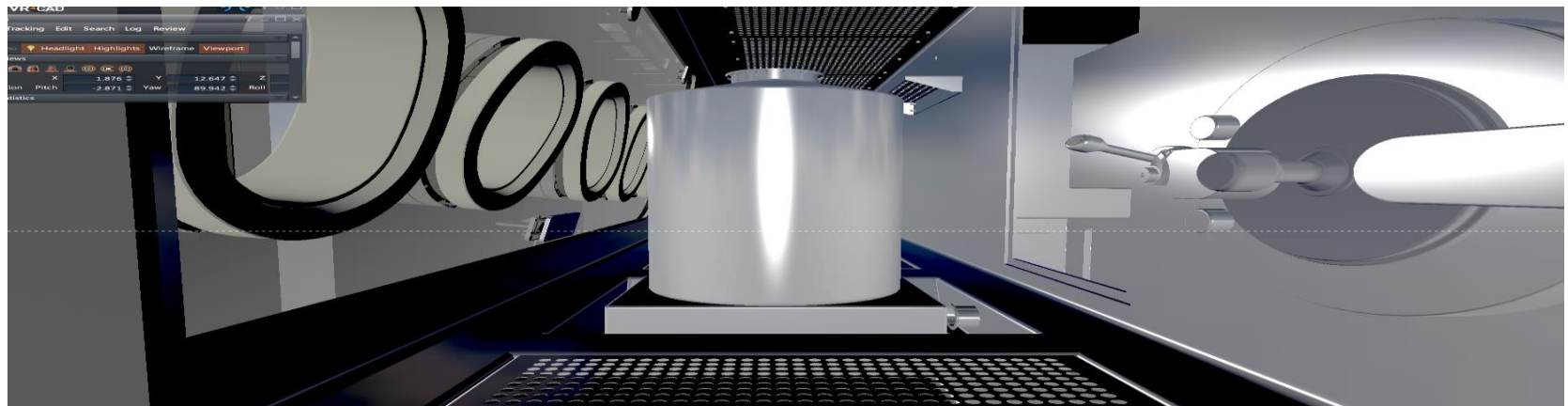
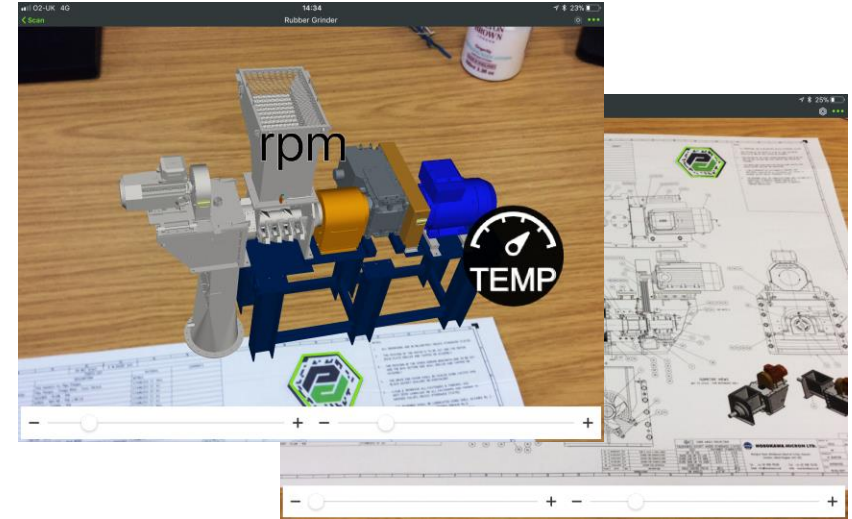
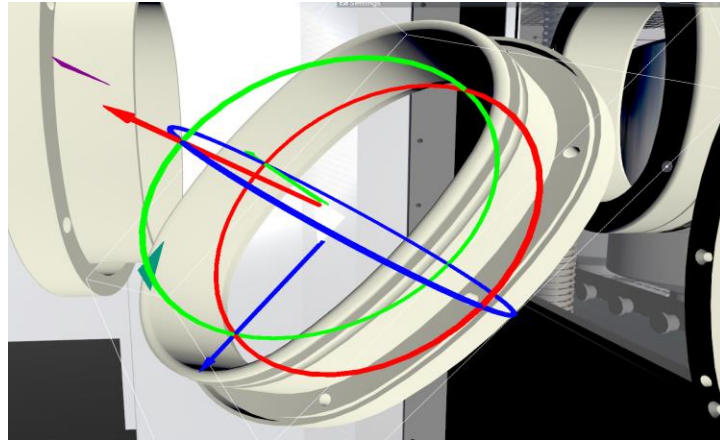
HOSOKAWA MICRON

UAB

SHERPA



Development of Virtual Reality Techniques





**Digitised Assets
(Multiple sites)**



**Condition Monitoring
& Decision Analytics
in the Cloud**



**Reports and
data analysis**



**Anomaly detection &
alarm management at
the edge**



Role based alerts



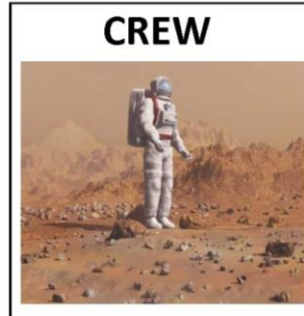
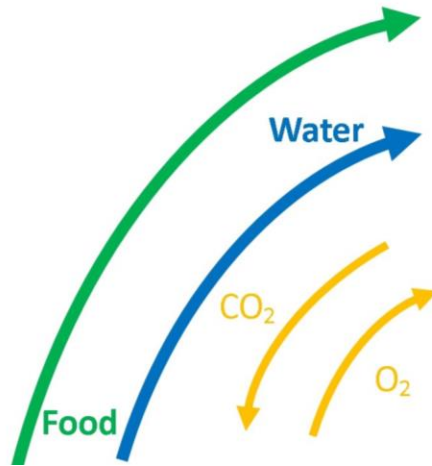
Inspections & actions

Smart Mobile Apps
Diagnostics & trouble-shooting
Performance improvement advice
Trending plant operating data

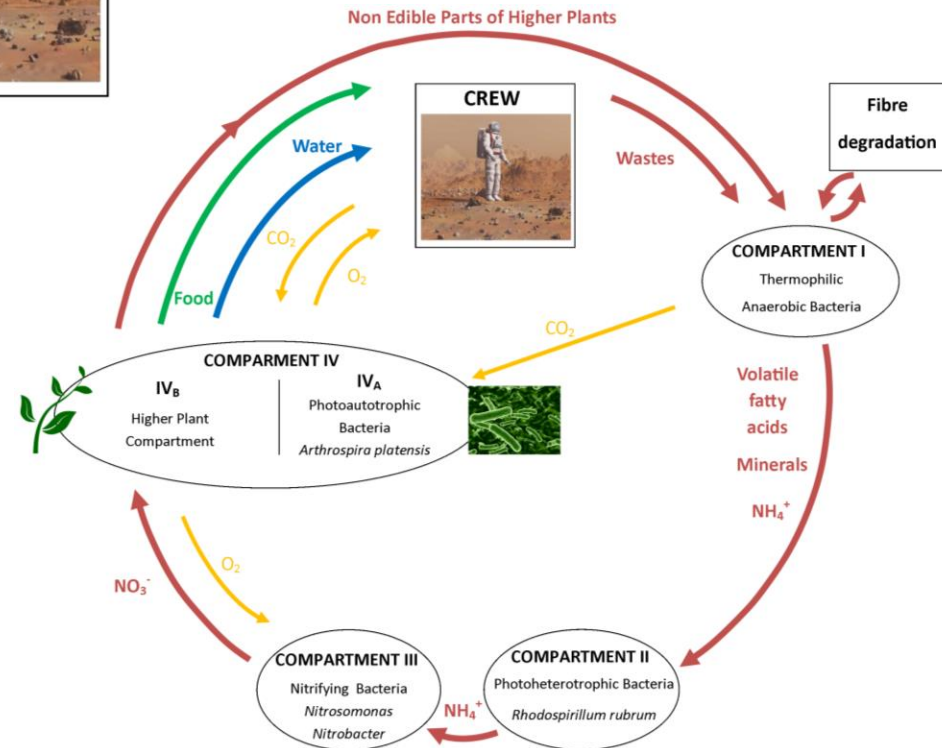


MELISSA Crew Compartment

Development of a high containment isolator and gas loop system to provide a habitat for the development and demonstration of regenerative closed loop life support systems.



New experimental 'crew' compartment for integration into the MELISSA Pilot Plant at UAB



*Photoautotrophic Bacteria
Arthrospira platensis*

The 'Crew'

One human equivalent to 40-60 rats (depending on species) with respect to O_2 consumption and CO_2 production



Key Design Requirements



- 'GAS TIGHT' design
- Ensure comfort & welfare of the animals
- Good ergonomic design for laboratory personnel
- Connect isolator & gas loop to compartment IVa
- Ensure materials do not adversely affect experiment results
- Incorporate instrumentation for system control and recording of data
- Incorporate interlocks systems for safe operation
- Enable easy cleaning and decontamination



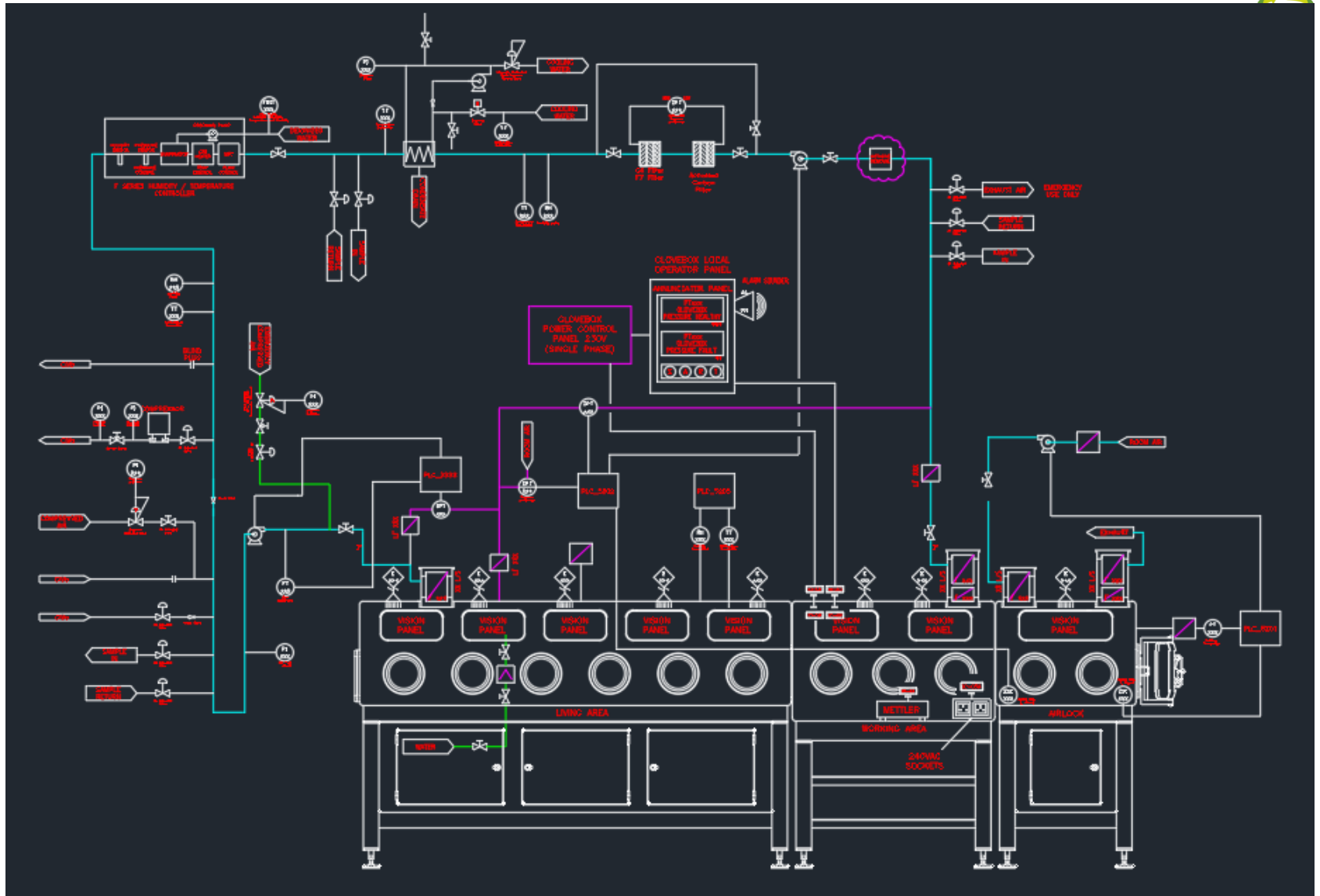
HOSOKAWA MICRON

UAB

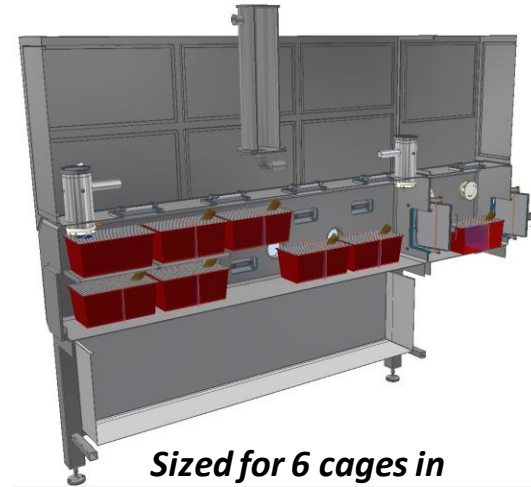
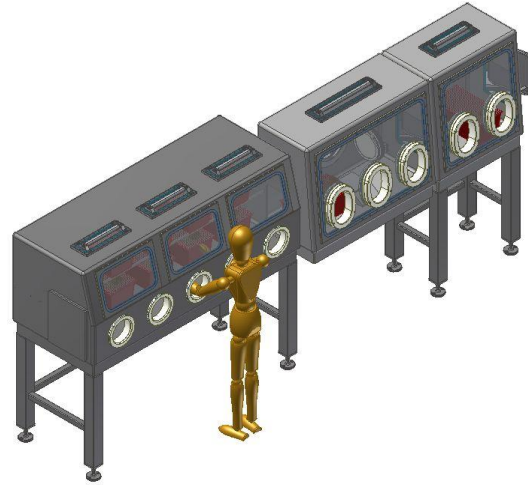
SHERPA



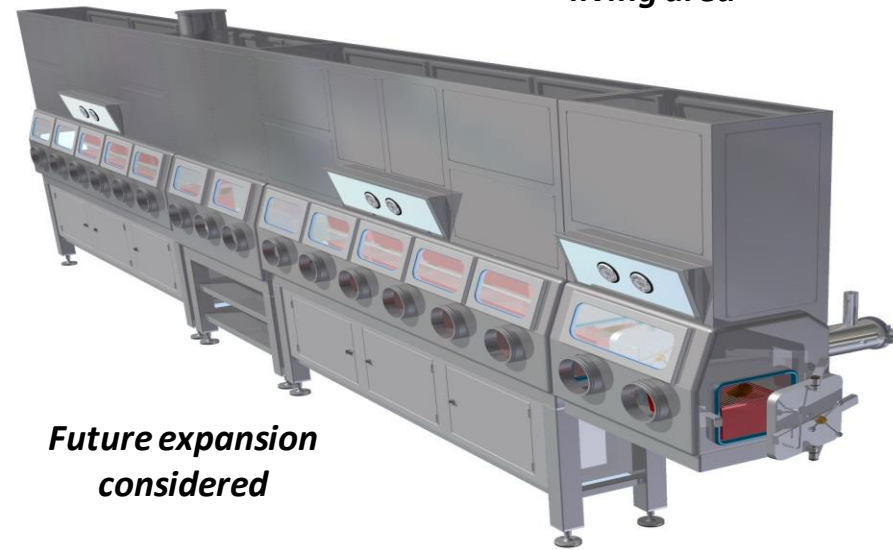
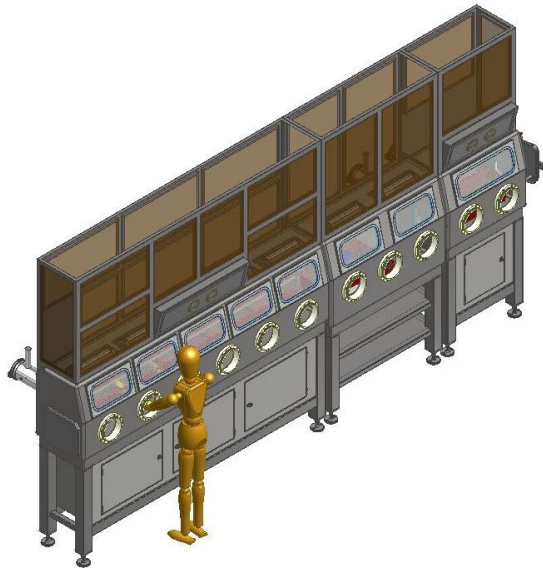
Preliminary Process Schematic (P&ID)



Early Concept Arrangements

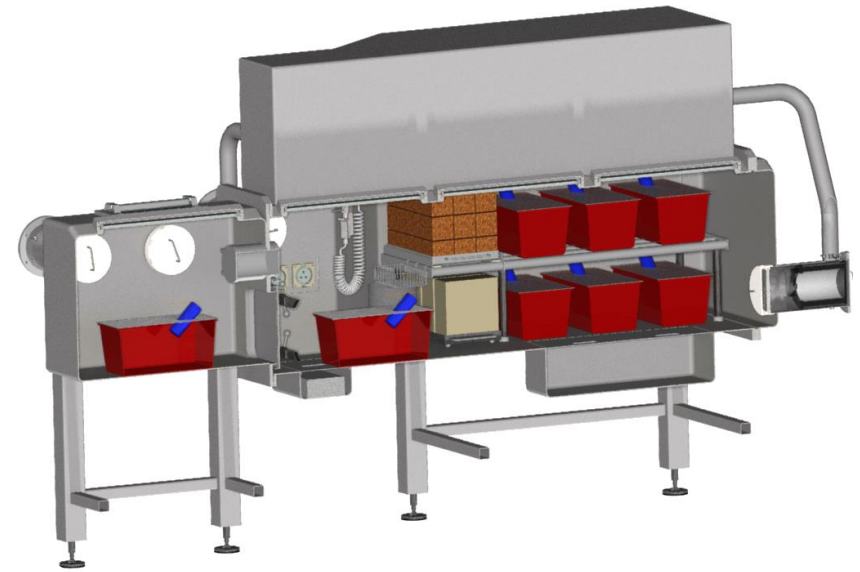
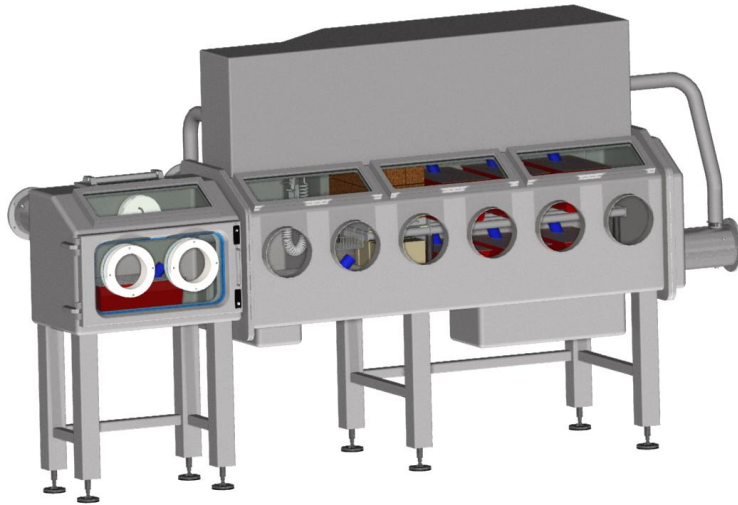


Sized for 6 cages in living area



Future expansion considered

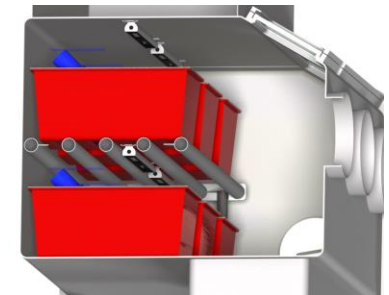
Isolator Design Development



Transfer airlock

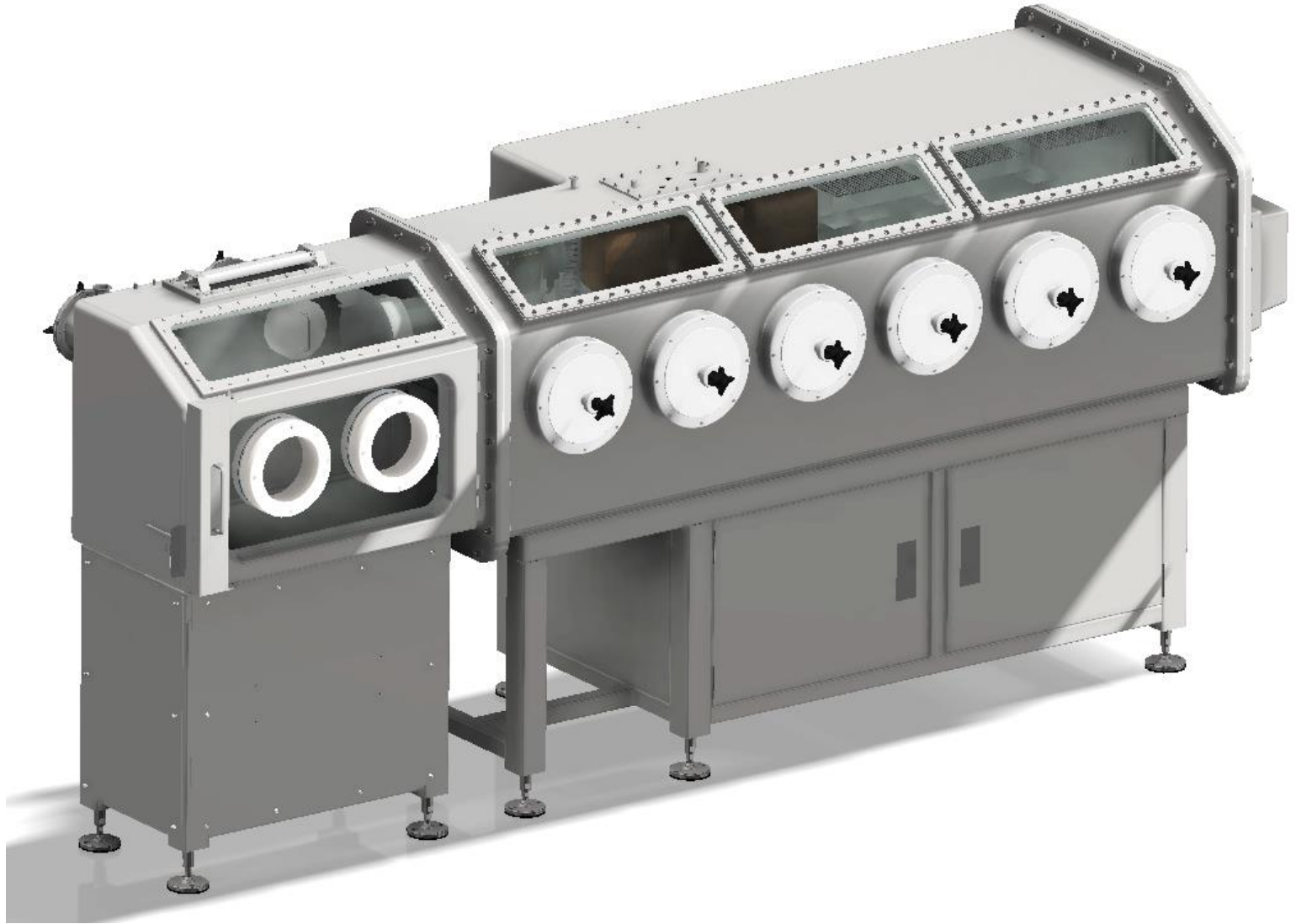


Food and Bedding Storage



Living Area

Final Isolator Arrangement



Ergonomic Testing

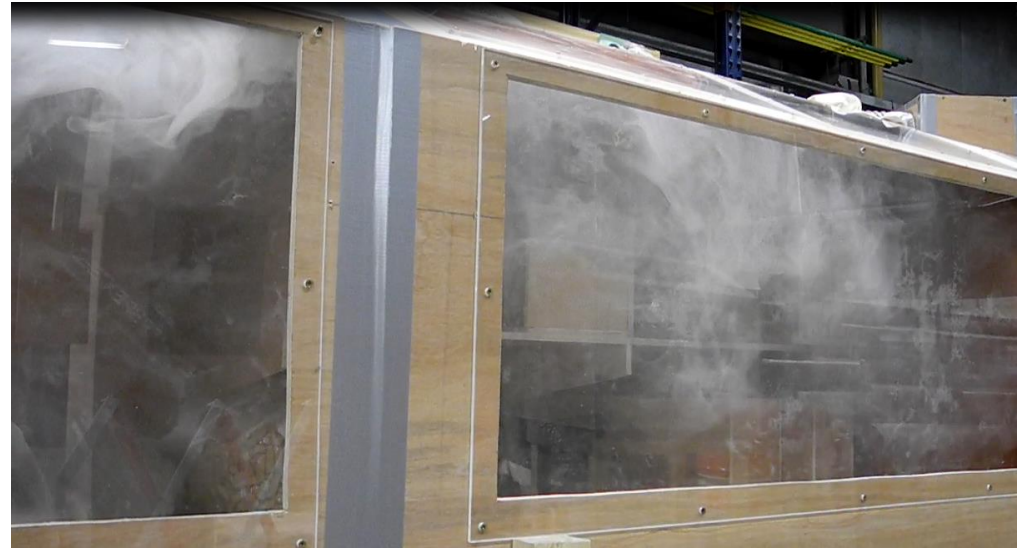


Wooden mock-up used for ergonomic testing and design verification

Smoke Testing

Smoke trials carried out using wooden mock-up to optimise airflow patterns

Smoke also injected directly into cages to evaluate the effectiveness of flushing contaminants



Gas Loop HVAC Design



System design allows control of the following parameters...

- Humidity
- Temperature
- Pressure
- Gas flow

All components designed to meet the same leak tightness criteria as the main isolator

During design the following influences on temperature and humidity levels were considered...

- Heat and moisture from animals
- Heat gain to/from room
- Heat gain from lights
- Heat gain from blower motors
- Temperature and moisture levels of gas returning from CIVA

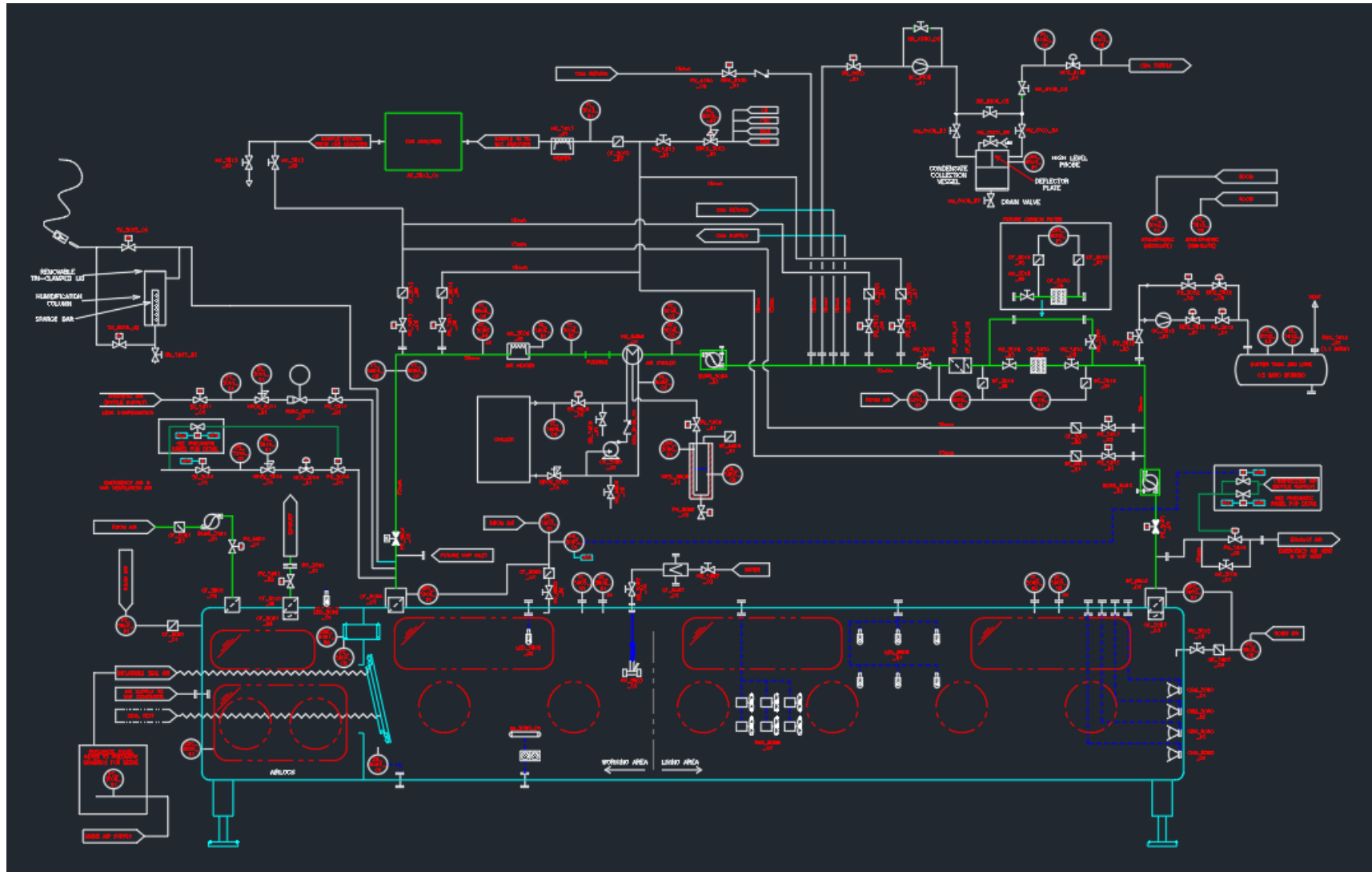


HOSOKAWA MICRON

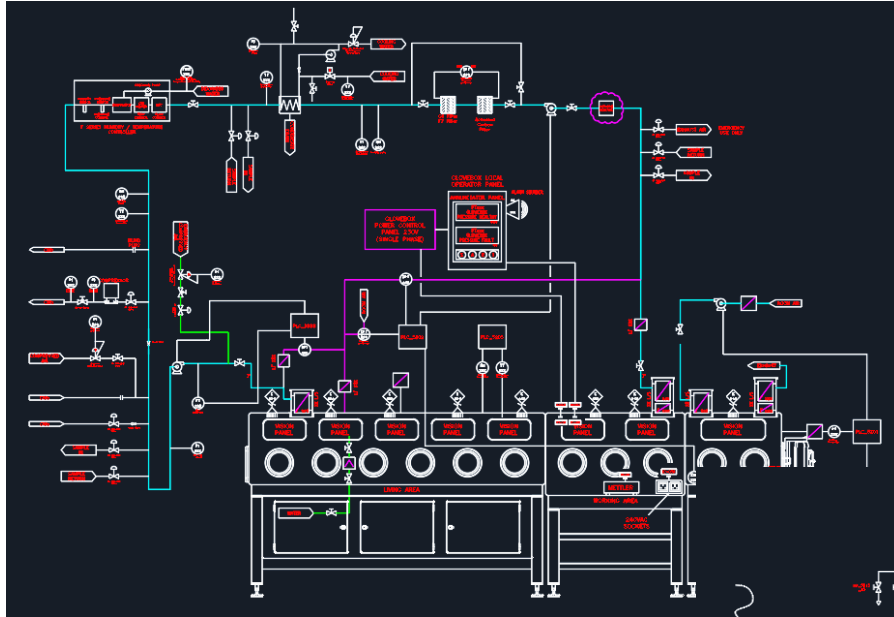
UAB



Finalised System Design

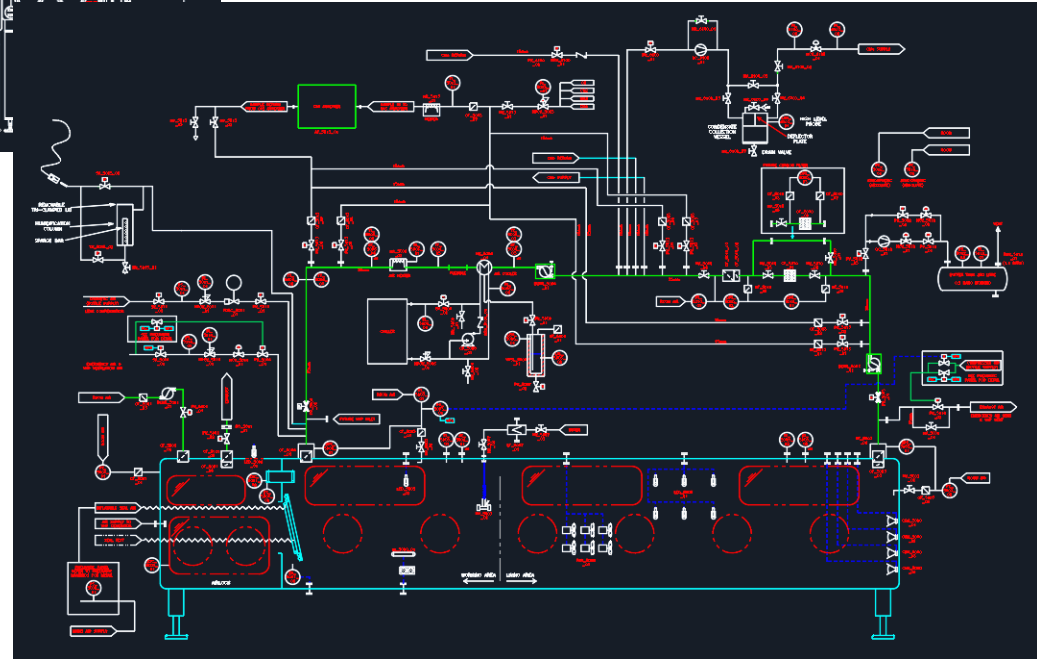


P&ID Design Development

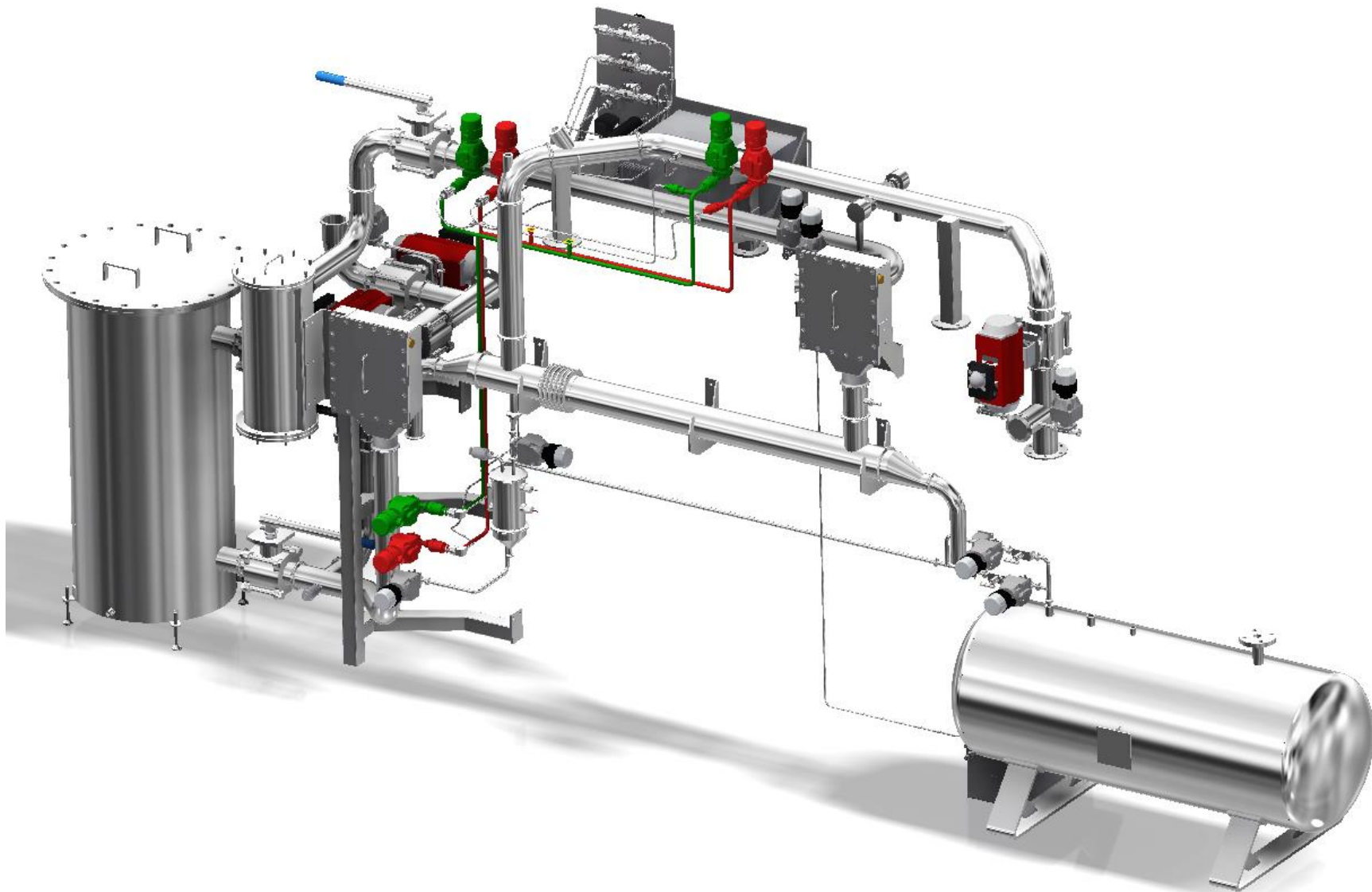


Revision 01

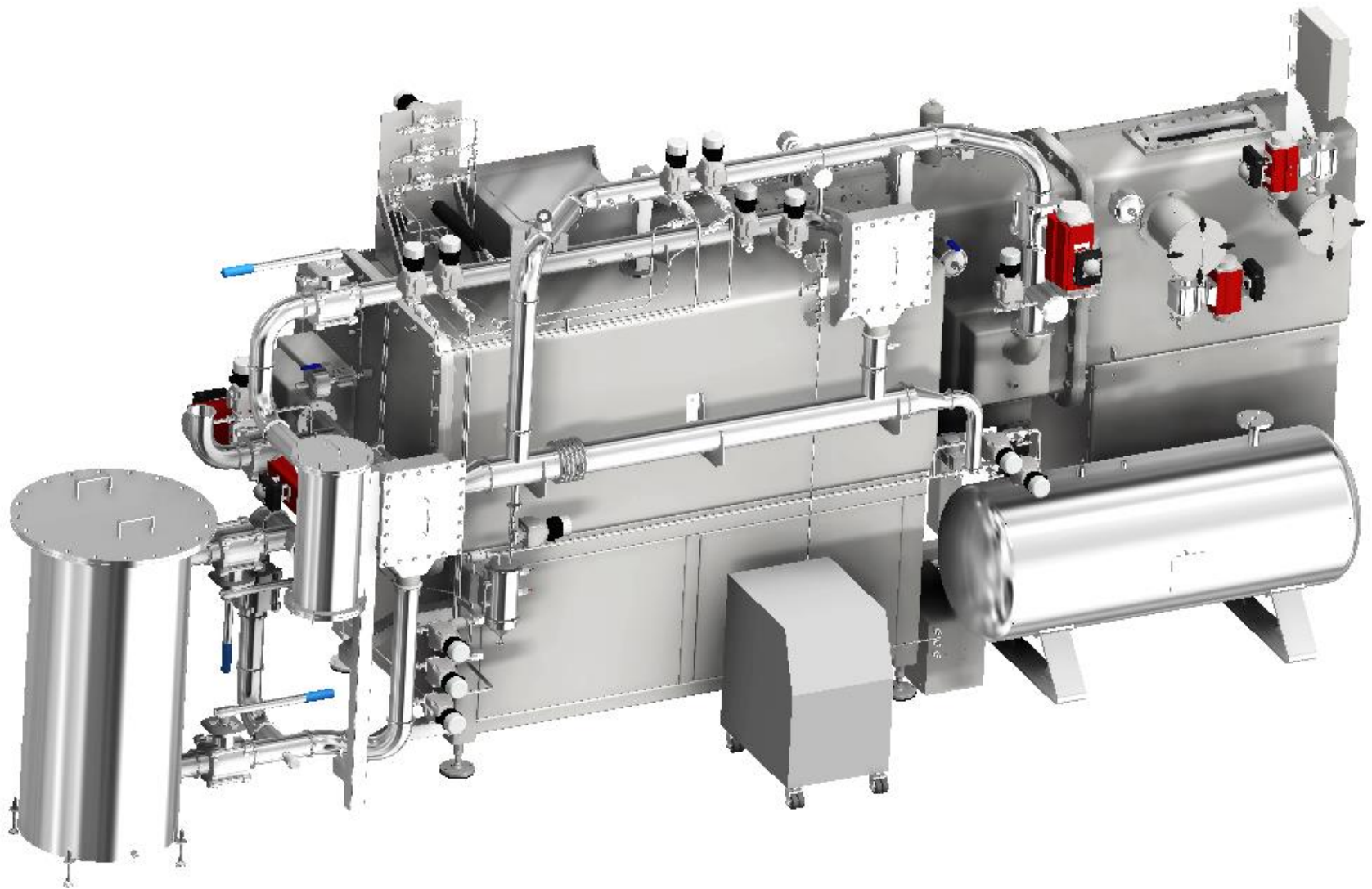
Revision 16



Gas Loop Design



Gas Loop/Isolator Integration



HOSOKAWA MICRON

UAB

SHERPA



Gas Tight Design



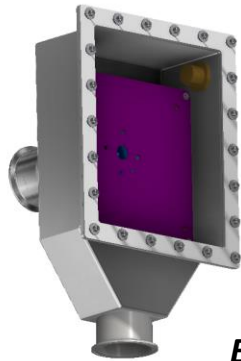
Maximum allowable gas leakage is 0.03% vol/hr (equivalent to 30 Pa or 0.3mbar in 1 hour)

(Derived from the maximum allowable dilution of the internal atmosphere during an experiment without having a significant adverse effect on the results)

Class	Leakage %vol/hr	Leakage Pa/hr	Application
-	0.03	30	MELISSA CV Isolator
1	0.05	50	Nuclear Glovebox
2	0.25	250	High Containment Isolator
3	1	1000	Standard Containment Isolator
4	10	10,000	Low Containment Isolator



Gas-tight Components



Blower



Condensate Collector



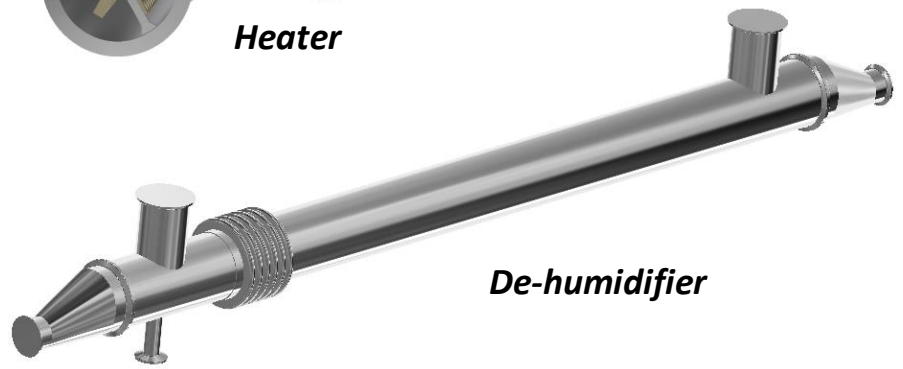
HEPA Filter



Carbon Filter



Heater



De-humidifier



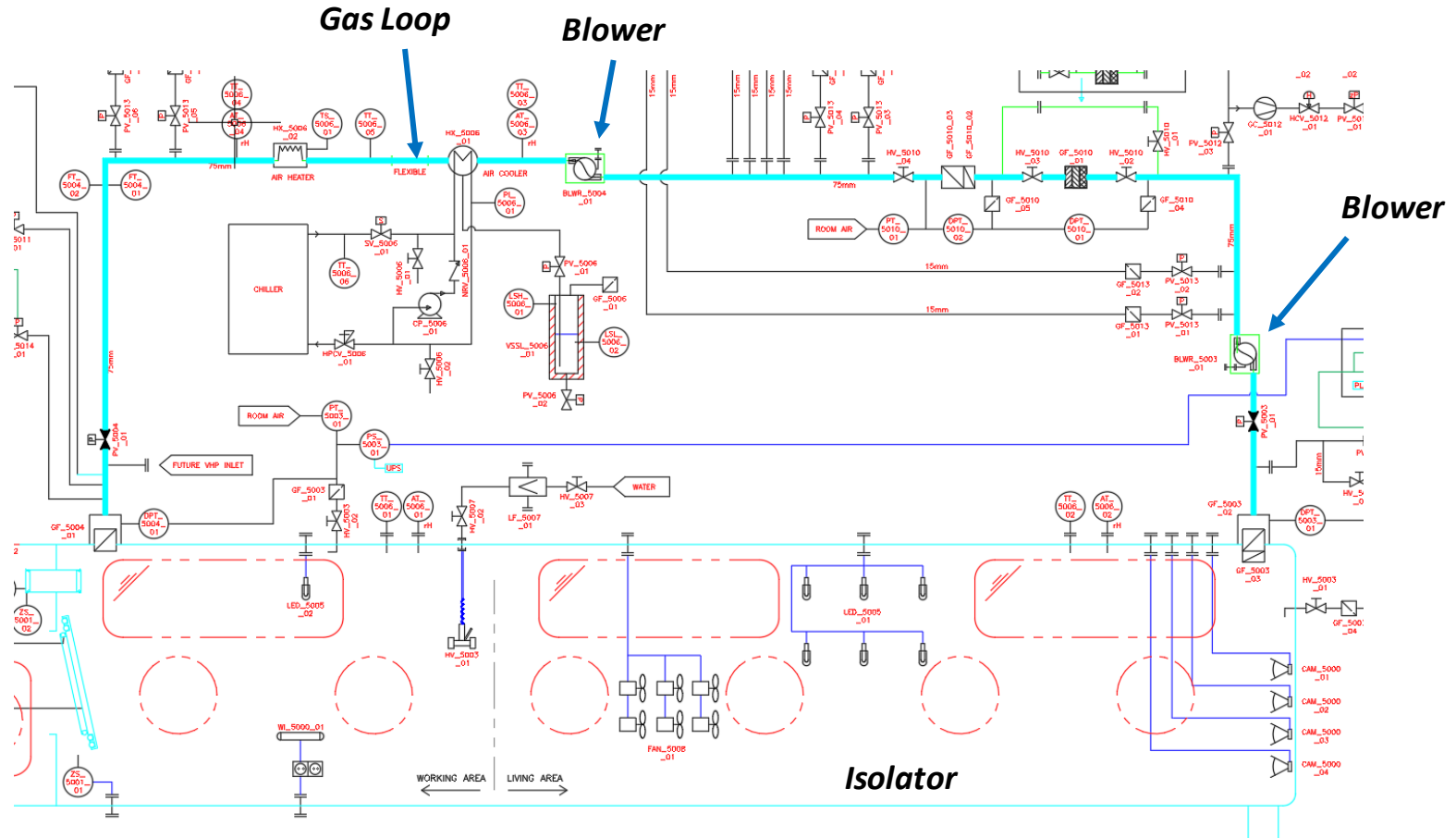
HOSOKAWA MICRON

UAB

SHERPA



System Pressure Management



- Pressures calculated for each part of the isolator and gas loop
- Internal system pressure kept positive but as low as possible to minimise leakage

Atmospheric Pressure Compensation

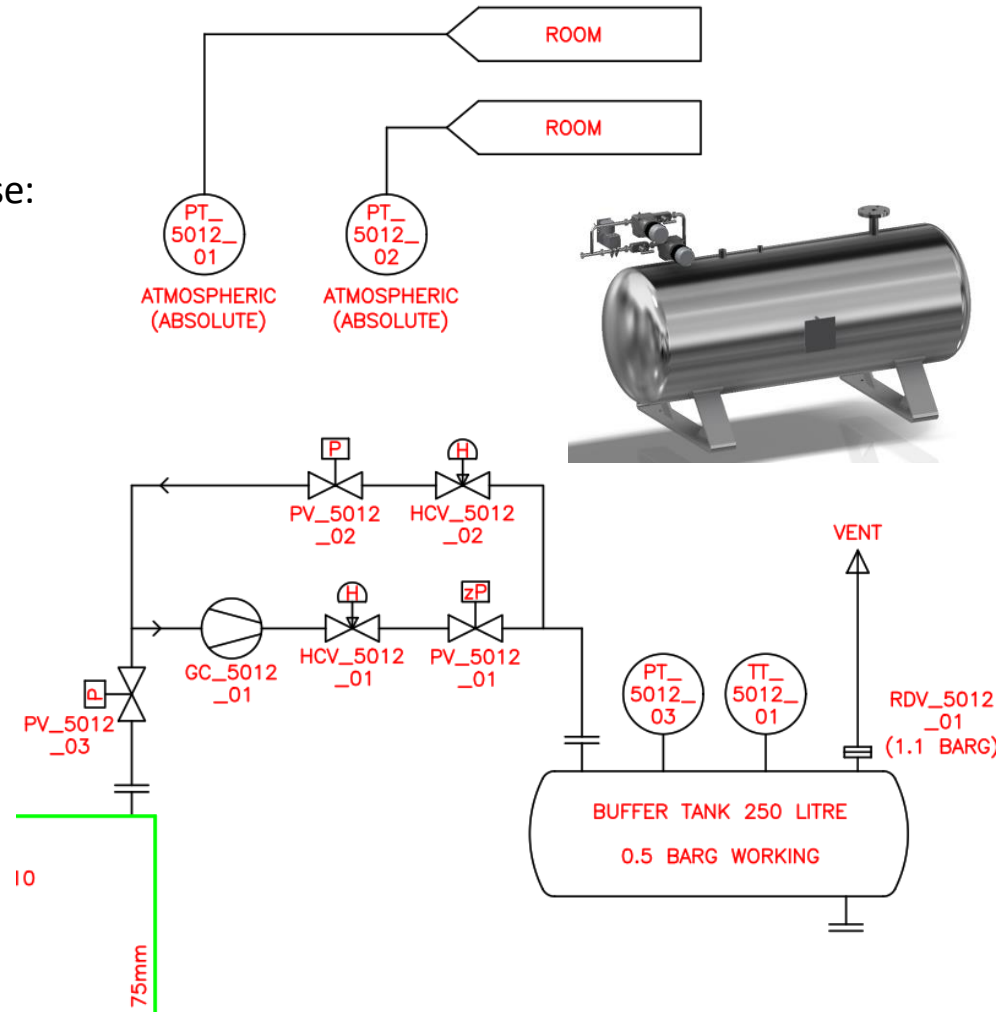
Changes in atmospheric pressure may cause under or over pressure in the system

Changes in differential pressure may cause:

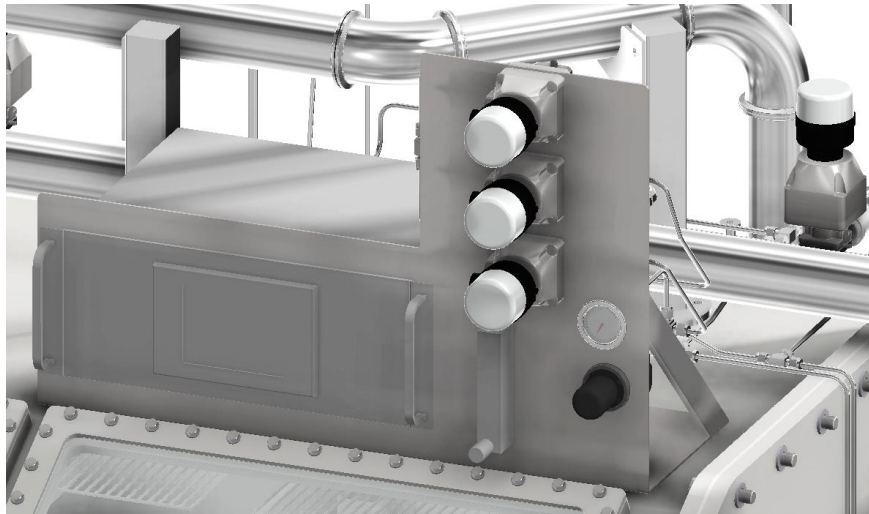
- damage to system
- excessive leakage
- difficulty for the operator (pressurised gloves)

Gas pumped into buffer tank or released back into gas loop depending on atmospheric pressure measurements

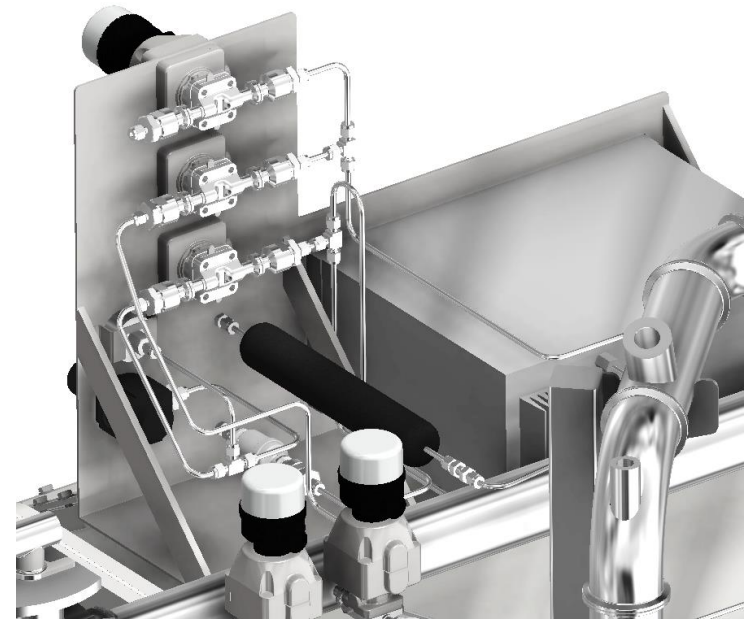
Historical meteorological data shows potential atmospheric pressure Changes in Barcelona



Gas Analysis



Gas from the Gas Loop
piped to the analyser



Connections for calibration gas taken
from compressed gas cylinders

Animal Welfare



Comfort and welfare of the animals was a key design consideration

System design takes into account all relevant regulations with respect to animal welfare

The following aspects were considered...

- Temperature
- Humidity
- Removal of contaminants and noxious gasses
- Noise levels
- Light levels

UAB Universitat Autònoma de Barcelona

Animal Experimentation

Ethics Committee on Animal Experimentation (CEEA)



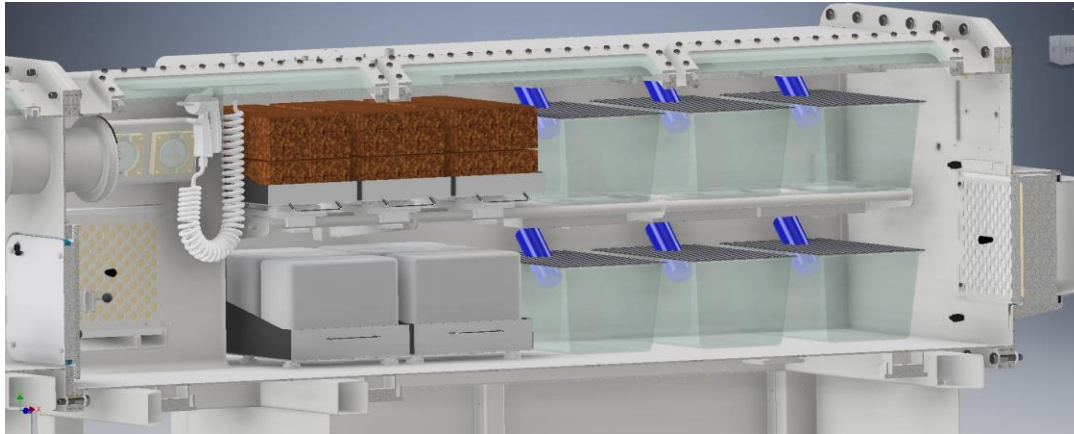
HOSOKAWA MICRON

UAB

SHERPA



Animal Welfare

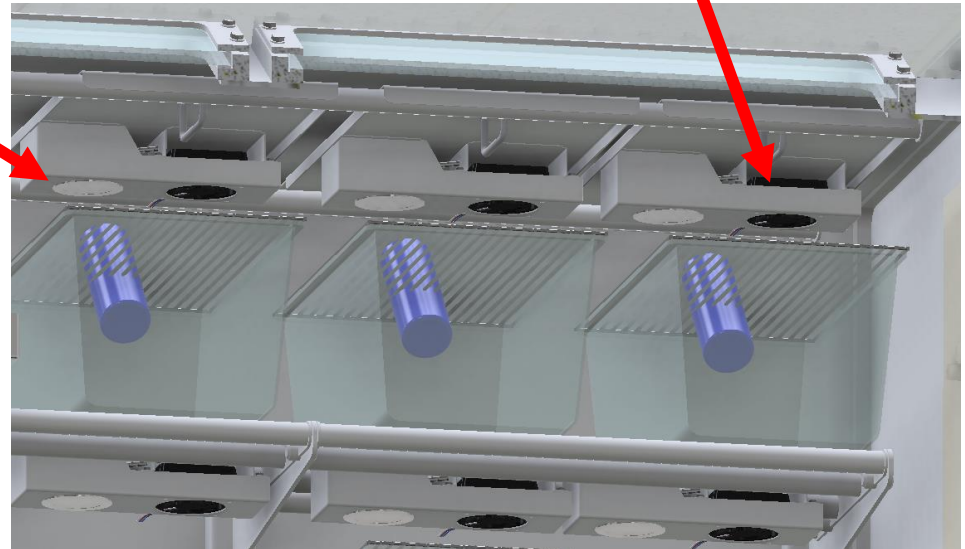


Individual cage cooling fans

Dimmable, diffused cage lighting to avoid shocking the animals



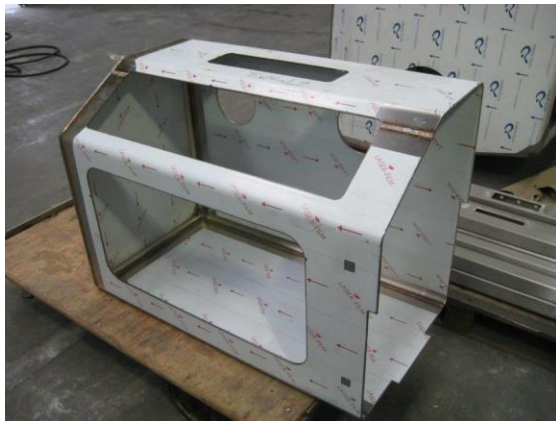
Lux level testing in the wooden mock-up



Manufacture



Isolator chamber and airlock during fabrication



Assembly - Isolator



HOSOKAWA MICRON

UAB

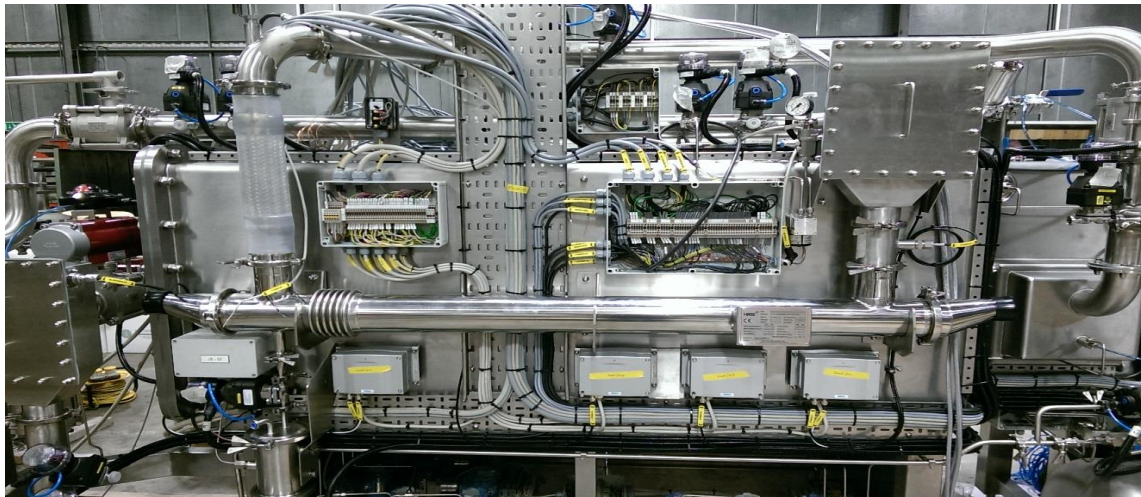
SHERPA



Assembly – Electrical and Control System



Assembly – Gas Loop Integration



Leak Testing

Phase 1:	Hosokawa Factory	Isolator	(Static Mode)
Phase 2:	Hosokawa Factory	Isolator and Gas Loop	(Static Mode)
Phase 3:	MELiSSA Pilot Plant	Isolator,	(Static Mode)
Phase 4:	MELiSSA Pilot Plant	Isolator and Gas Loop	(Static Mode)
Phase 5:	MELiSSA Pilot Plant	Isolator and Gas Loop	(Dynamic Mode)

Static mode leak testing proves the integrity of the system components, seals etc...



Dynamic mode testing is carried out with full air recirculation and all connected equipment and systems in operation

Experimental results achieved during dynamic testing with a full 'crew' of animals will be presented by UAB

Leak Testing

Static leak testing carried out in generally in accordance with ISO 14644-7:2004 and ISO 10648-2:1994 using the 'pressure decay' method

Leak testing carried with both positive and negative internal pressures

Test Measurements:

- Chamber pressure (differential)
- Atmospheric pressure
- Internal temperature
- External temperature (ref. only)



Final pressure is corrected for changes in atmospheric pressure and internal temperature

- 0.1 mbar atmospheric change = 10 Pa internal pressure correction
- 0.01°C = 3.5 Pa internal pressure correction

Acceptance criteria: < 0.03% vol leakage/hr (30Pa/hr)

Arrival at UAB in Barcelona



UAB

Universitat Autònoma
de Barcelona



HOSOKAWA MICRON

UAB

SHERPA



Installation into MELiSSA Pilot Plant



HOSOKAWA MICRON

UAB

SHERPA



Installation – Control System Wiring



HOSOKAWA MICRON

UAB

SHERPA



Installation Complete



The Next Challenge: PaCMan

Plant Characterisation unit for closed life support system engineering, Manufacturing and testing

Some of the technology and solutions developed for the crew compartment are now being utilised for the PaCMan project.

A plant characterisation unit (PCU) will be designed and manufactured in conjunction with Enginsoft, Odys and Ciris for installation at the Università degli Studi di Napoli Federico II



UNIVERSITÀ DEGLI STUDI
DI NAPOLI FEDERICO II



HOSOKAWA MICRON

aharper@hmluk.hosokawa.com